



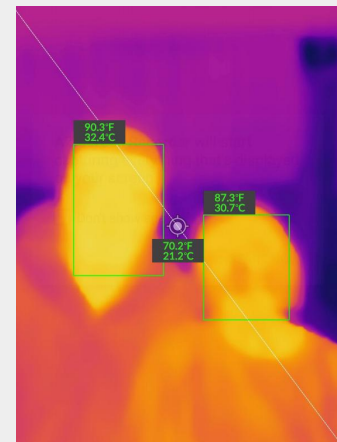
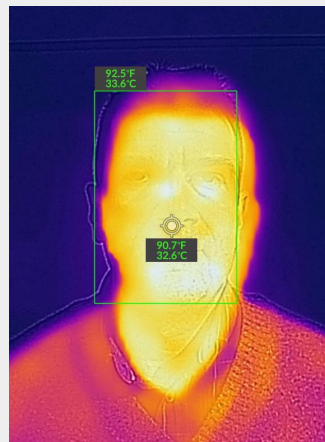
PREVENTION IS BETTER THAN CURE

Developed by X.Labs, **feevr** is a quick and effective artificial intelligence (AI) based system for screening and detecting individuals with elevated temperature in a crowd.

The solution enables the user to identify individuals with a fever efficiently and effectively. A fever is an indicating symptom of an infectious disease like COVID19 (Coronavirus). **feevr** is non contact based which prevents the chances of cross infection.

feevr is user friendly and can be setup in minutes as both a fixed (tripod supplied) or handheld solution.

www.feivr.tech

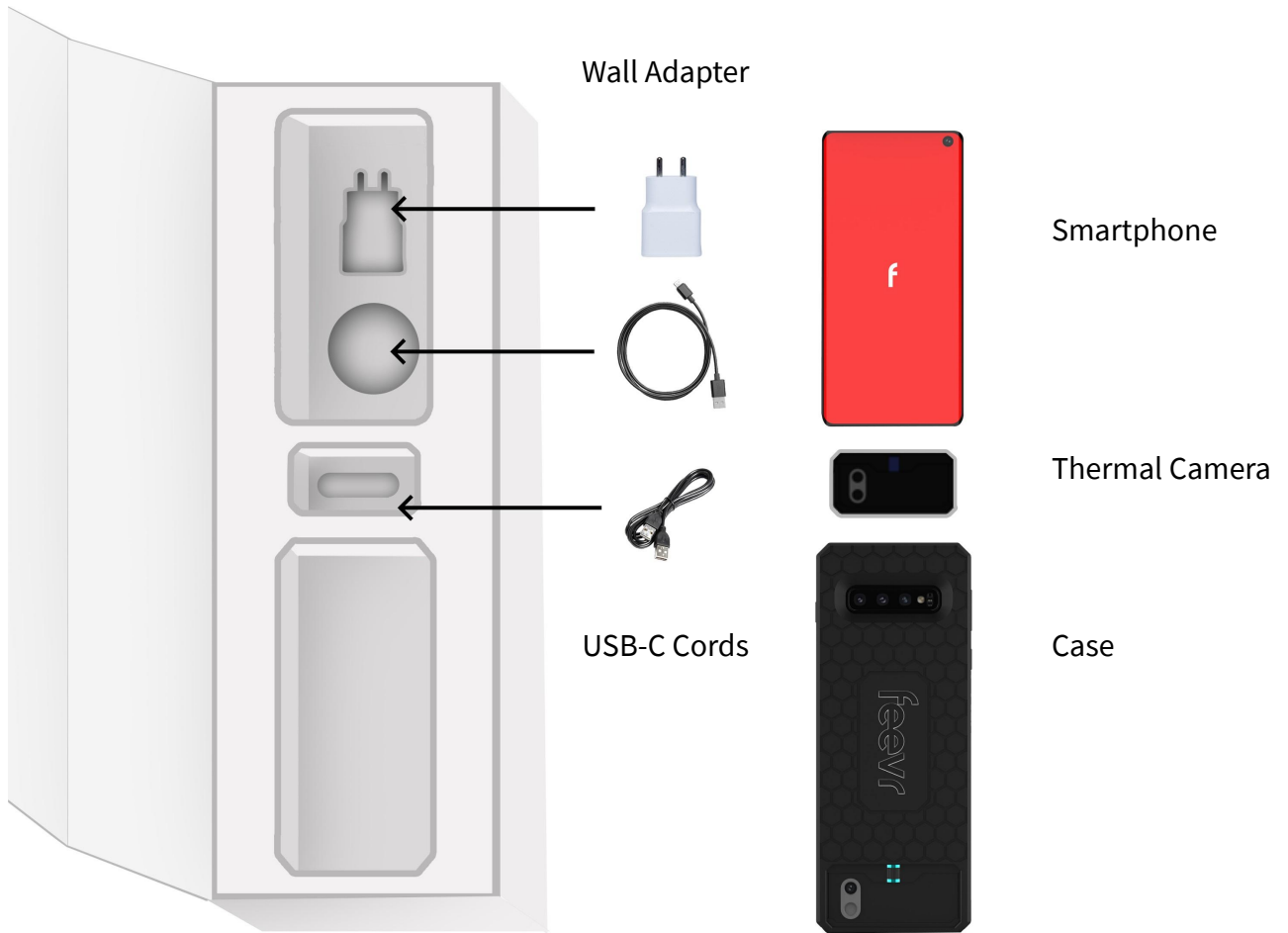


feevr enables you to identify individuals with a fever - an indicating symptom of a infectious disease - efficiently and effectively - without making direct body contact, minimizing the risk of cross-contamination.

Snapshot function of thermal image

Captures & alerts automatically when an individual's temperature reaches and/or goes above the input threshold.

WHAT'S INCLUDED



Tripod



Vuzix Blade (Optional)





SPECIFICATIONS

Thermal pixel size	17 μm
Thermal resolution	19,200 pixels (160 x 120)
Thermal sensitivity	100 mK
Object temperature range	-20°C to 120°C (-4°F to 248°F)

COMMON FEATURES

Certifications	RoHS, CE/FCC, CEC-BC, EN62133
Operating temperature	0°C to 35°C (32°F to 95°F), battery charging 0°C to 30°C (32°F to 86°F)
Non-operating temperature	-20°C to 60°C (-4°F to 140°F)
Size (W x H x D)	68 x 34 x 14 mm (2.7 x 1.3 x 0.6 in)
Weight (incl. battery)	36.5 g
Mechanical shock	Drop from 1.8 m (5.9 ft)

OPTICAL FEATURES

Spectral range	8 – 14 μm
Visual resolution	1440 x 1080
HFOV / VFOV	50° \pm 1° / 43° \pm 1°
Frame rate	8.7 Hz
Focus	Focus Fixed 15 cm – infinity

POWER

Video	Male USB-C (Android)
Charging	Female USB-C (5V/1A)

MEASUREMENTS

Emissivity correction	Matte, Semi-Matte, Semi-Glossy, Glossy
Measurement correction	Emissivity; Reflected apparent temperature (22°C / 72°F)
Shutter	Automatic/Manual

POWER

Power	Battery life Approximately 1 hr
Battery charge time	40 min

APP

Image presentation modes	Infrared
VividIR	Yes
AI warning	Audible
Thermal area detected:	Facial Region/Forehead
Palettes	Gray (white hot), Hottest, Coldest, Iron, Rainbow, Rainbow HC, Arctic, Lava, and Wheel
Capture modes	Video