

Ideal Home

EST. 1920

THE HOME OF GOOD IDEAS FOR 100 YEARS

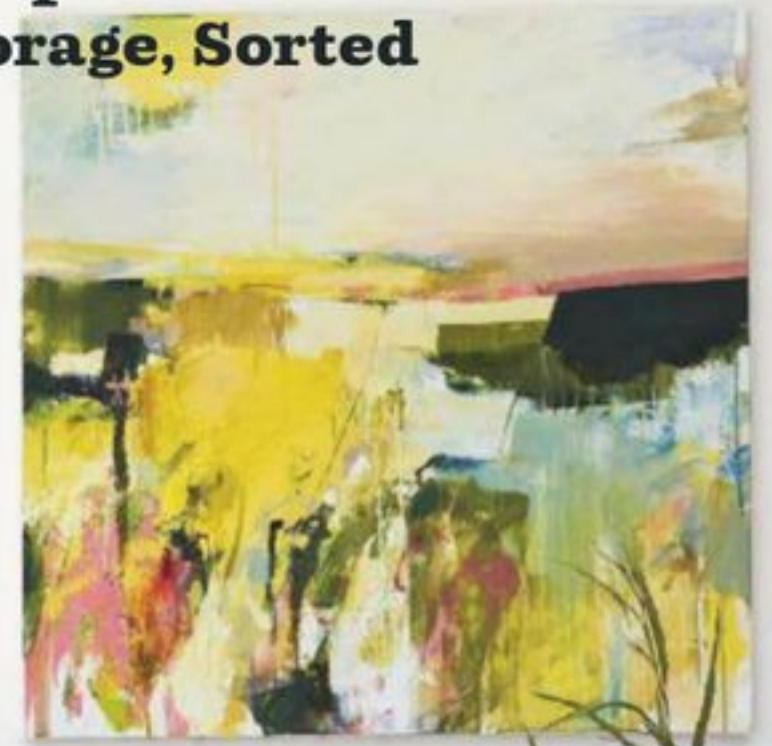


Small changes, **BIG IMPACT**

- ◆ Easy Upcycling Projects
- ◆ Lovely Wallpapers & Murals
- ◆ Best New Accessories
- ◆ Bedroom Storage, Sorted

HOW TO
*Incorporate
Vintage
Furniture*

20
**SIMPLE,
JOYFUL
STYLE
UPDATES**



Beautiful **REAL HOMES**

- ◆ Victorian House With A Contemporary Twist
- ◆ Elegant Five-Bedroom Townhouse
- ◆ Family Friendly Home In Cape Town
- ◆ Boho-Style Period Coach House



Love
SARAH'S SMART
LIGHTING SYSTEM?

Turn to page 113
to find out more

*'We created a
contemporary look
with character'*

The Millans combined modern finishes with country details for a simple, welcoming kitchen

BEFORE



BESPOKE EXTRACTOR
Blends seamlessly into the wall



Welcome to my home

Sarah Millan lives here with her husband Graham and their children Tomas, 14, Alex, 13, and Ana, eight.

THE PROPERTY

A seven-bed Victorian semi in south London, bought in May 2008.

WHAT IT COST

Units.....	£30,000
Appliances.....	£12,000
Sink and taps.....	£2,080
Worktops.....	£14,000
Flooring.....	£2,100
Lighting.....	£1,400
Wall tiles.....	£1,003
TOTAL.....	£62,583

“The kids love having breakfast at the island, and visitors are always amazed by the light”

‘Having grown up in Spain, I like a rustic Mediterranean feel rather than an ultra modern kitchen,’ says Sarah. ‘So I chose very pale off-grey units with elements of brass and copper.’

Bespoke units, £30,000, Blakes London. Rise & Fall copper school lights, £549 each, Original BTC



HOW SARAH AND GRAHAM DID IT

'Nine years after buying this house, we embarked on a major project, extending by a metre into the garden and excavating the basement to create a playroom, lounge, bedroom, bathroom and plant room. At the same time, we added an extra first floor bedroom and top floor dormer extension. Black-framed doors were installed across the bottom two floors, with a double height void across one side, bringing more light into the basement. For the kitchen, we wanted a large island, two big sinks, two eye-level ovens and

a pantry cupboard. Although everyone seems to be putting in dark kitchens, I'm not so daring and wanted to keep everything light. The building work took 18 months, so we rented nearby and moved back in four months before it was finished to save money. Everything works well because we put a lot of thought into the details. I particularly love the instant hot water tap, although all my relatives prefer a normal kettle! The industrial and rustic feel at the rear of the house offers a nice contrast to the Victorian frontage.'

ABOVE The couple already had the display cabinet, dining table and lighting, but gave the space an industrial update with brick slips. 'The builders were amazing and matched the line internally to the bricks outside,' says Sarah.

Fleet London reclaimed brick slips, £74.98/sq m, My Brick Wall, would have a similar effect. Antique French-style kitchen cabinet, £2,114.99, Homes Direct 365, is similar. Try Tolix A white dining chairs, £48.30 each, Mobelaris

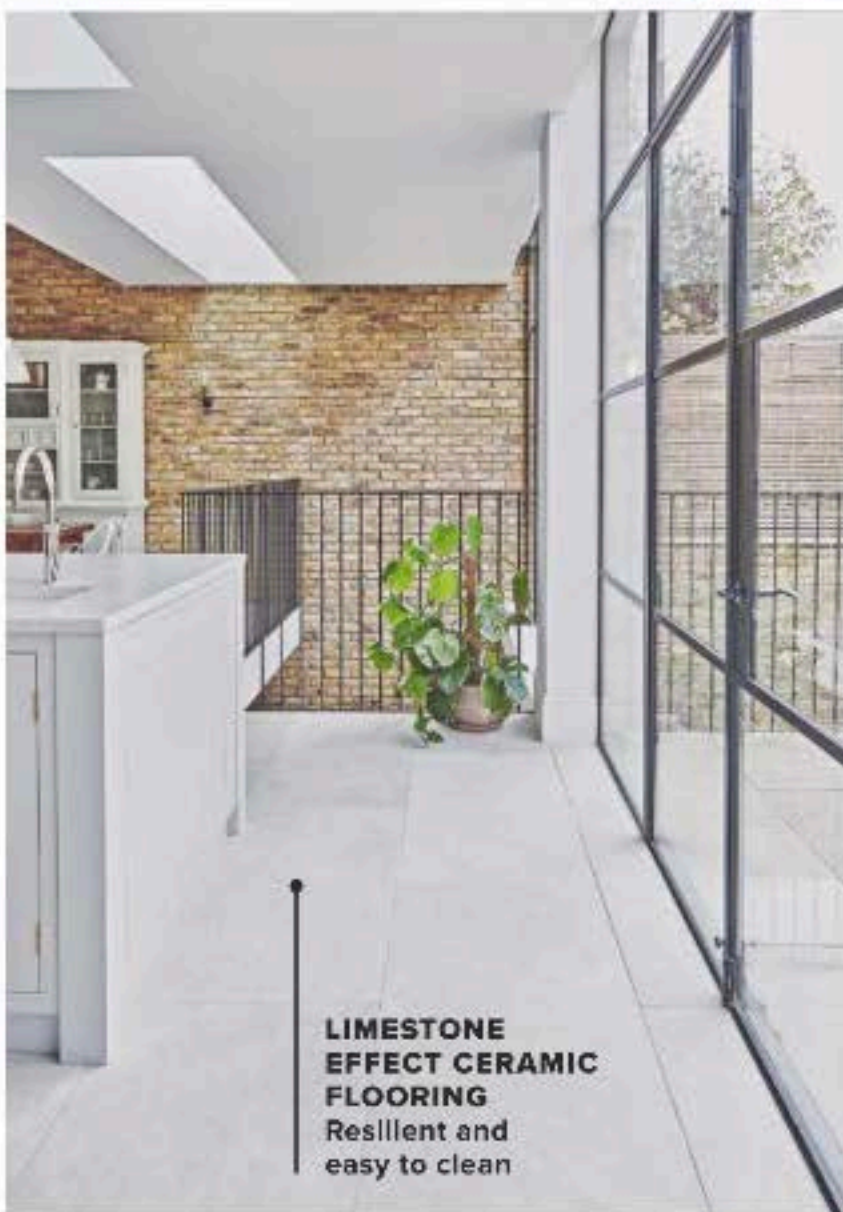


ABOVE 'I discovered that it's not the cabinet style that's the important thing,' says Sarah, 'it's the little details, like this hidden cutlery drawer, as well as tiles, worktops, handles and lighting.'

Toast & Marmalade crockery, from £17.95 for a toast plate, Emma Bridgewater



QUARTZ WORKTOPS
Durable enough to handle high temperatures



LIMESTONE EFFECT CERAMIC FLOORING
Resilient and easy to clean

LEFT 'The glazing brings in a huge amount of light, even in winter,' says Sarah. 'The only drawback is it's amazingly hot in summer and we hadn't thought enough about ventilation, so we had to install an awning in the end.'

Steel door systems, from £2,700sq m, Fabco Sanctuary

ABOVE This side of the kitchen is dedicated to storage, with eye-level ovens breaking up the run of units. The glazed section has a tiled interior to introduce detail and texture, plus it shows off Sarah's collection of ceramics.

Neff warming drawer, £419, John Lewis & Partners



WHAT I'VE LEARNED

“Using a lighting designer turned out to be a great idea. They thought of things we hadn't considered, like prep lights and lower lighting for the evenings”

FEATURE KAREN WILSON. PHOTOGRAPHS MALCOLM MENZIES/LIVING INSIDE