



DETALE
CPH

SPACE

Your personal space.
Share your story #detalecph



Del dit DETALE-projekt ^{DK}

Del dit helt eget DETALE projekt eller find massevis af inspiration i andres projekter på Instagram under #detalecph. Vi modtager meget gerne billeder til deling på hello@detalecph.com

Del ditt DETALE-prosjekt ^{NO}

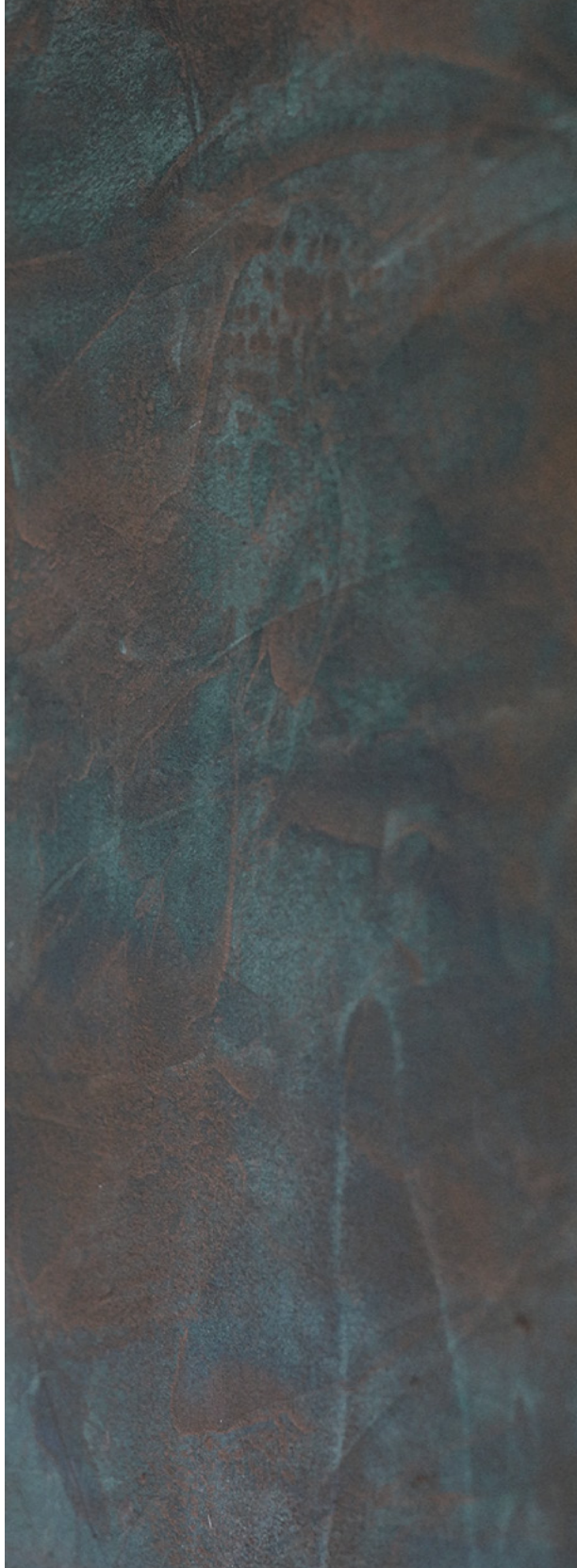
Del ditt helt eget DETALE prosjekt eller finn masse inspirasjon i andres prosjekter på instagram under #detalecph. Vi vil gjerne motta bilder som vi kan dele, på hello@detalecph.com

Dela ditt DETALE-projekt ^{SE}

Dela ditt helt eget DETALE-projekt eller hitta massor av inspiration i andras projekt på instagram under #detalecph. Vi tar gärna emot bilder för delning på hello@detalecph.com

Share your DETALE-project ^{UK}

Share your DETALE project or find lots of inspiration from other projects on instagram #detalecph. We are happy to receive pictures to share at hello@detalecph.com



You need

A surface with applied filler on

Sand filler
Sand paper
1 soft brush (for dust)
Primer

SPACE

2 wide filling knives on 10 cm-25 cm
Container for the metal paste
Cover such as cardboard or plastic, as well as masking tape

When filler is applied and the surface is dry, sanded, primed and dust free, you are ready to apply SPACE metal paste.

Preparation

SPACE metal paste shall be applied on a filler surface with primer. It is important that the surface is sanded well, to obtain a 100 % even and equal surface. All uneven parts will be visible. We recommend a quality, medium-grain sand filler.

Durability

Please note that SPACE is a décor product and therefore, may be susceptible to bumps and scratches. For greater ability to keep clean, we recommend that the surface gets treated with DETALE Topcoat, which can be purchased from a DETALE retailer. A varnish can also be applied, if an even stronger surfaces is required. It takes approx. 24hrs before a SPACE wall is dry and cured.

Find your colour under One Tone or Two Tone and follow the instructions below.



One Tone

Orbit, Aurora, Eris, Nova, Vega, Norma, Zodiac, Infinity

Delimit the area with masking tape. Tear off the corner of the bag and press the paste into a bucket or tray. The product is applied in a thin overing layer, which is immediately absorbed into the surface. The entire wall is carried out at once, without breaks. The product is intended as a one-layer solution, but if the desired effect is not achieved, an extra layer can be applied. Your creative SPACE, your rules.

Tip: Create a more vivid result, by applying product in a layer, on top of what already is applied. That way you will ensure a great coverage all over.

Cosmos, Eclipse, Element, Gravity

Delimit the area with masking tape. Tear off the corner of the bag and press the paste into a bucket or tray. The product is applied in ultra-thin layers, which are immediately absorbed into the surface. The metal is diffused sporadically, creating a two-tone effect when the paste is scraped on. The thinner the layer, the clearer the two-tone effect. The entire wall is performed at once, without breaks. The metal effect can now be provoked by moving a clean, steel filling knife over the surface. Be careful not to make holes or unwanted scratches with the corners of the filling knife.

Tip: The product is intended as a one-layer solution, but if the desired effect is not achieved, an extra layer can be applied. Your creative SPACE, your rules.

Two Tone

detalecph.com

@detalecph

hello@detalecph.com