

LODORE FALLS

— HOTEL & SPA —

LODORE FALLS HOTEL, BORROWDALE

Client: Lake District Hotels Ltd

Value: £8m

Completion: October 2018

Duration: 63 weeks

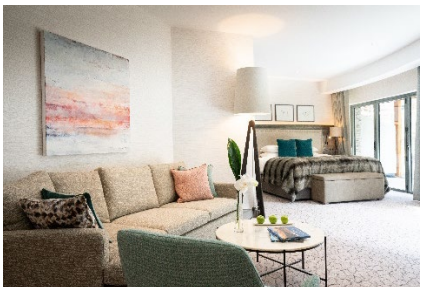
Contract: JCT Standard Building Contract



This prestigious scheme was completed in phases. Phase 1 being the demolition and groundworks. Phase 2a comprised the new function room and break-out area. Phase 2b created the new brasserie with suites above and Phase 2c involved the new build spa with suites above.

WORK INCLUDED

- 18 new deluxe suites with en-suite bathrooms and private balconies
- New function room and lounge area
- Brand new restaurant with riverside terrace
- New spa facilities comprising treatment rooms, rasul, champagne & deli bar, steam rooms, showers and changing area
- New 16m outdoor infinity edge hydro pool with neck jets, underwater loungers and overflow hot tub feature
- Two feature bridges across the river which separates the new spa building from the main building



ACHIEVEMENTS

- High standard of finish throughout.
- The project was delivered with zero reportable Health & Safety incidents.
- The project was delivered with zero environmental notices issued.
- Over 68% of Subcontractors used were local which exceeds the company target.
- Minimal complaints were received during the project.
- No issues working next to Derwentwater and river that runs through the site.



LEISURE, HOTELS AND RETAIL

ESTABLISHED SINCE 1830 / BUILDING THE FUTURE / www.thomasarmstrong.co.uk