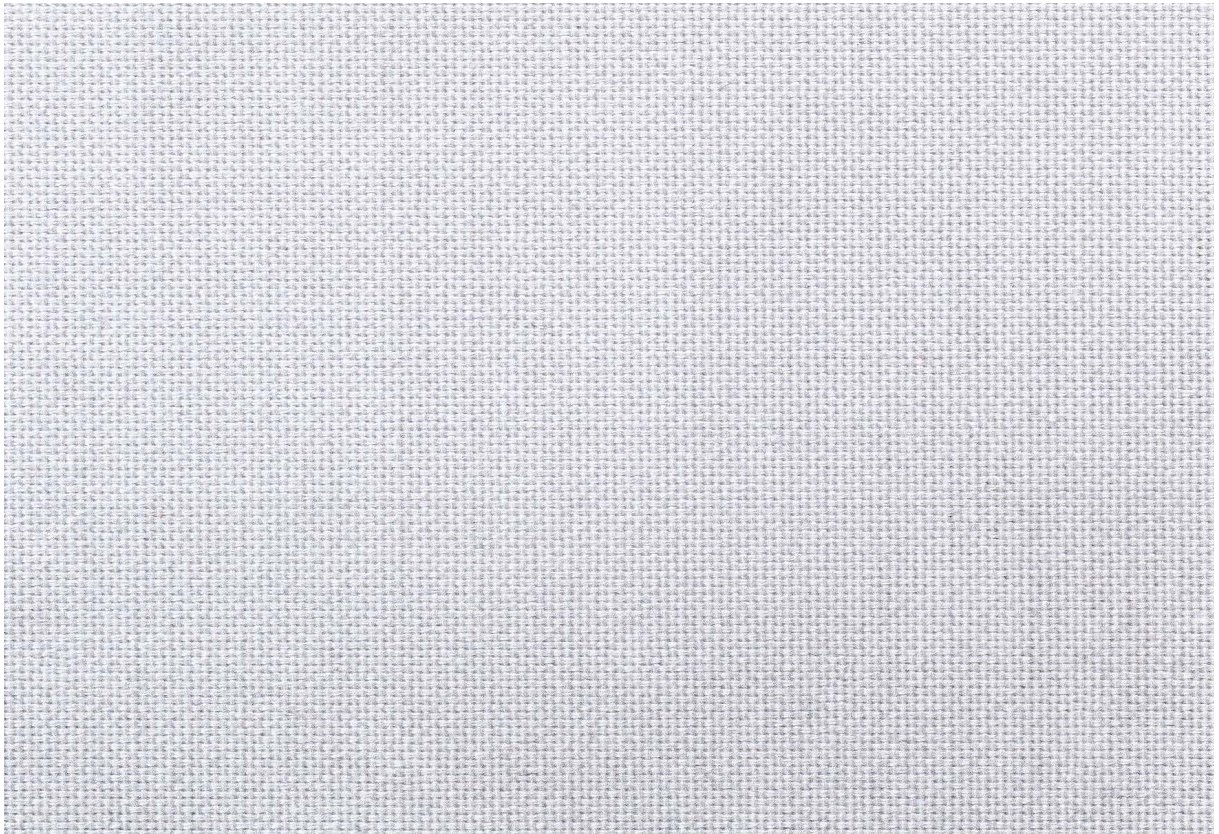


ADVANCED ARCHITECTURAL SHADING

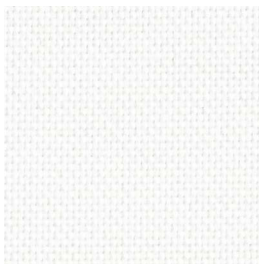
eco**TEX**TM-Feel 9004



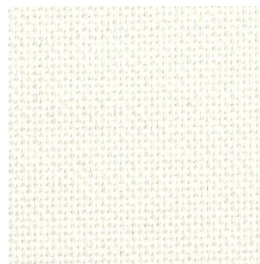
ecoTEXTM-Feel 9004



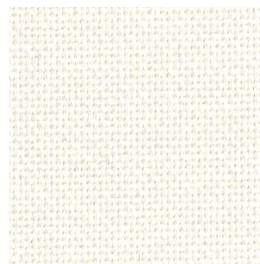
9004-212



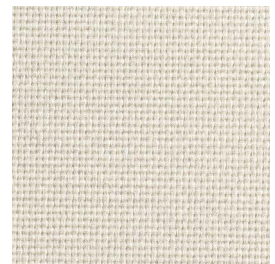
9004-100



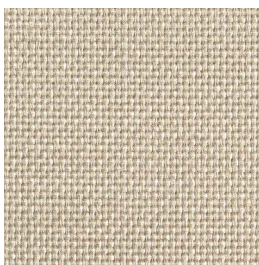
9004-101



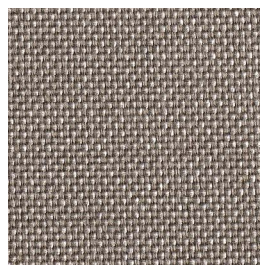
9004-209



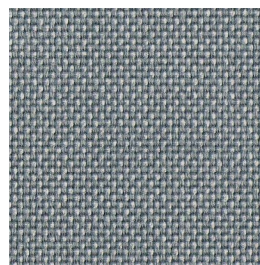
9004-210



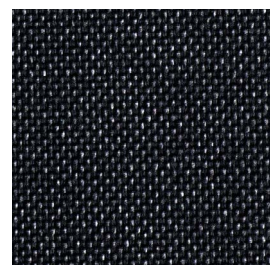
9004-211



9004-213



9004-116



9004-214

Our ecoTEX™ series represents a broad range of energy efficient, solution-based roller shade fabrics offering the industry's highest rate of sun protection performance. Our top priority is the elimination of the impact of textile-generated chemical ingredients on our health and wellbeing. In fact, the ecoTEX™ development team holds a pioneering status in the field. Its stringent testing criteria exponentially exceeds existing legislation, which is why we have terminated many substances known to be harmful, despite being legal. By pushing the limits of technology and being committed to zero tolerance for substrate toxicity, the ecoTEX™ brand is intended to become the optimal choice for commercial and residential shading projects.

ECOTEX HIGHLIGHTS

- Oeko-Tex standard 100 tested
- Oeko-Tex SkinSafe
- No off-gassing
- Free of regulated substances – no PVC, Halogens, Formaldehyde, plasticizers, heavy metals or pentachlorophenol
- Free of non-regulated substances – no pesticides, allergenic dyes, tin-organic compounds, carcinogenic colorants or azo dyes
- Flame resistant to the most stringent international standards
- Low fume emissions in case of fire
- ecoTEX™'s BioPlus version inhibits microbial growth: produced using Trevira CS with BioActive
- Recyclable or safely incinerable while harvesting energy




Feel 9004 – Fabric is produced using 100% Trevira CS yarn with a soft touch fabric feel, yet it provides excellent weave stability performance for effective shade roll operation. Thin yarn construction is suitable for large dimension shades while utilizing smaller, sleeker hardware systems. Such a configuration, consequently, delivers a maximized window glazing space.

SPECIFIC FEATURES

- Good sound absorbing characteristics: aw value = 0.30 (ClassD)
- Excellent weave stability and strength
- Special custom colours available for large projects



FABRIC TECHNICAL SPECIFICATIONS

PARAMETERS			FIRE CLASSIFICATION
COMPOSITION	100% Polyester Trevira CS		CL 1 - M1
ROLL WIDTH	cm	inches	
	330	130	CAN/ULC-S109-03 (large and small scale)
FABRIC WEIGHT	g/m²	oz/yard²	
	240	7.1	
FABRIC THICKNESS	mm	inches	
	0.40	0.016	
ROLL LENGTH	Lm	Ly	
	30	32.8	NFPA 701 TM #1 & 2
TYPE OF CUT	US/laser		
OPENNESS FACTOR (OF)	3%		
	  		

FABRIC THERMAL AND VISUAL SPECIFICATIONS

FABRIC	SOLAR AND OPTICAL PROPERTIES (EN 14501)				SOLAR FACTOR "g _{tot} " (GLASS & BLIND)	
FEEL 9004	TS	RS	AS	TV	g _{tot} int C*	g _{tot} int D*
9004-100	46%	51%	3%	45%	0.41	0.27
9004-101	41%	53%	6%	42%	0.40	0.27
9004-209	40%	55%	5%	40%	0.40	0.26
9004-210	40%	52%	8%	39%	0.41	0.27
9004-211	36%	48%	16%	30%	0.42	0.27
9004-213	27%	40%	33%	14%	0.44	0.28
9004-212	37%	49%	14%	31%	0.42	0.27
9004-116	29%	41%	30%	15%	0.44	0.27
9004-214	24%	31%	45%	8%	0.47	0.28
Tests carried out in accordance with the following standards: UNI EN 14501:2006 UNI EN 14500:2008 UNI EN 13363-12008 UNI EN 410:2011 EN 13561:2015	100% TS - Solar Transmission RS - Solar Reflectance AS - Solar Absorptance			TV Visible light transmission	*Type C Double glazing 4-16-4 with low emissivity coating on the outer surface of the inner pane, space filled with argon.	*Type D Reflective double glazing 4-16-4 with low emissivity soft coating on the inner surface of the outerpane, space filled with argon.