



# Health and Social Care

Apprenticeship (NVQ)  
Level 3

*Core & Practice*



**Tel: 01443 749 000**  
**[www.educ8training.co.uk](http://www.educ8training.co.uk)**



# Who are Educ8?

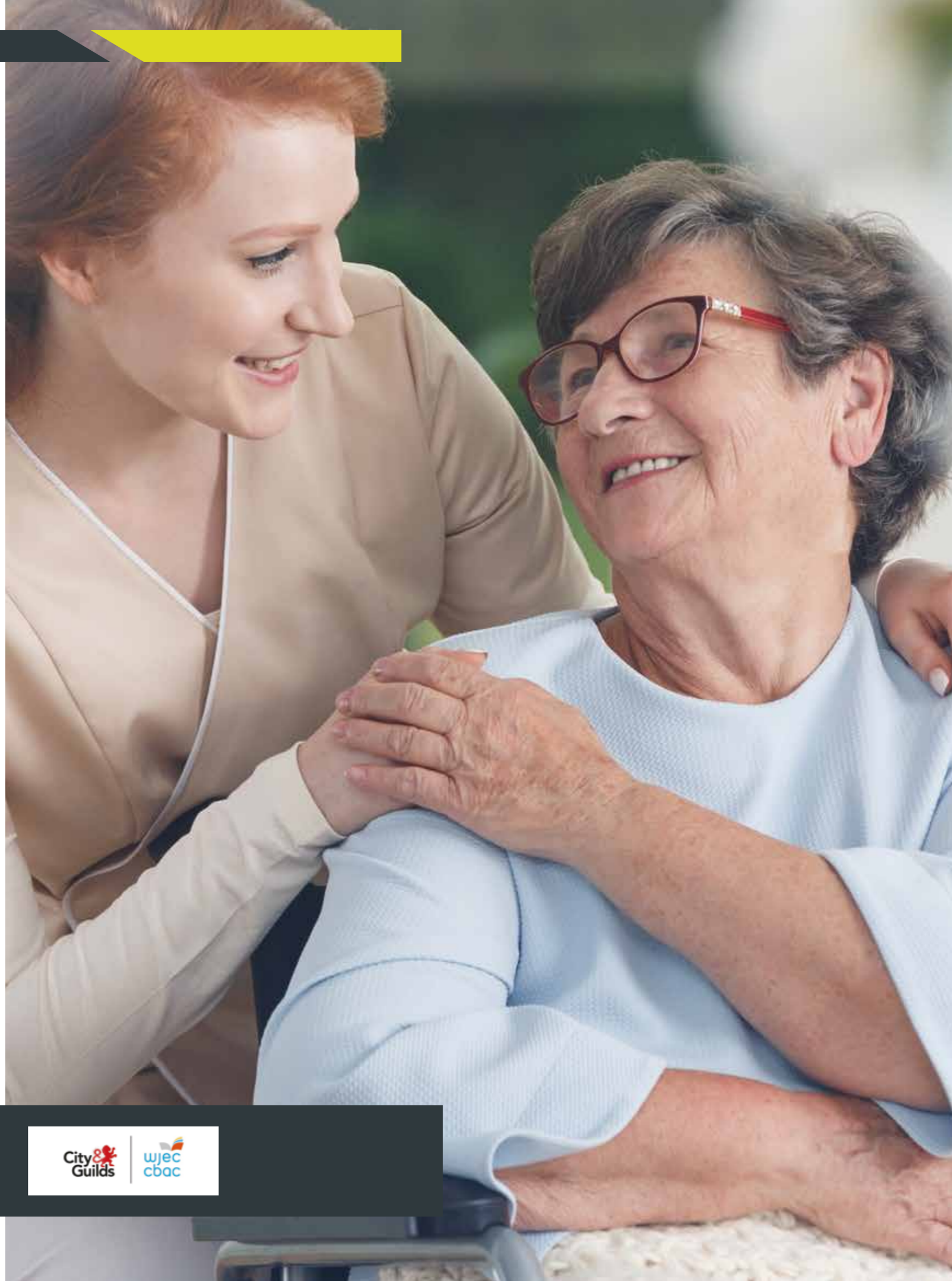
The Educ8 Group (incorporating ISA Training Ltd) are a government contracted training provider, supplying Apprenticeship training programmes throughout our area of operations.

Established in 2004, our 180+ staff work from a number of locations throughout the area in which we operate.

Our entire philosophy is to put the quality of our training provision and the learner at the heart of everything we do, which is reflected in our good and excellent grades from external inspections and quality audits. Moreover, 100% of the employers we work with (over 500 each year) and 100% of learners graded Educ8 as 'Good or Excellent' - feedback which we are extremely proud of.

Our focus on service and quality extends not only to our customer base, but to our own staff. Educ8 were voted 6th in the UK in the Sunday Times Best Companies 2019 and Best Employer in Wales 2019 by the Federation of Small Business (FSB).

The old adage that "...companies who treat their staff well, treat their customer well..." could never have been more aptly applied than to the Educ8 Group.



100% 

## Overall Rating

100% of employers rate Educ8 good or better as their training provider

## Applied Knowledge

99% of employers report that their employee(s) are good, or better, at applying what they have learnt to their work role



## Employer needs

100%



100% of employers felt Educ8 Group were effective at taking into account the needs of the employer when planning the apprenticeship delivery



## Support

99% of employers report that Educ8's apprenticeship programme is good, or better, at supporting the development of their employee(s)

## Recommendation

99% of employers would recommend Educ8 Group to others





# What is Health and Social Care Level 3?

This qualification allows learners to develop the knowledge and skills required for employment and / or career progression in the Health and Social Care sector

The course combines two qualifications - the Core which provides the theoretical knowledge followed by Practice which is assessed in the workplace.

All of Educ8's Health and Social Care Trainer Coaches have undergone an extensive professional development programme to ensure they are best equipped to deliver the new industry training standards. This means that Educ8 are best placed to offer bespoke one to one support for both the employer and the learner.

The quality of our training is central to all that we do which is evidenced by our Estyn grading of Excellent/Good, something which we are enormously proud of.



This qualification is specifically designed for those who are in a more senior role such as team leaders, mentors, senior carer and those supporting others in their job role.

This qualification is for those who work with and support others within a variety of settings such as the NHS, care homes, supported living, mental health, domiciliary care and learning disabilities,

This course is delivered in your workplace and arranged around your working hours.



## Level 3 Health and Social Care

### Core

To achieve the Level 2 Health & Social Care: Core learners will be assessed on five mandatory units. Assessment will be in the form of case studies and multiple choice questions.

#### Mandatory

Unit Title
Principles and values of health and social care (adults)
Health and well-being (adults)
Professional practice as a health and social care worker
Safeguarding individuals
Health and safety in health and social care

#### Practice

To achieve the Level 3 Health and Social Care: Practice (Adults) qualification, learners must achieve a minimum of **50** credits in total;

- 18 credits must be achieved from the Mandatory group.
- A minimum of 14 credits must be achieved from Optional group A
- The balance of 18 credits can be achieved from units in Optional groups A or B

#### Mandatory

Unit Title	Credits
Promoting Core Practice in Health and Social Care (Adults)	18

**These are just a selection of the Optional Units available, the Trainer Coach will go through the full list of units and work with the individual and employer to tailor the qualification to individual interests and the needs of the business.**

#### Optional group A

Unit Title	Credits
Co-ordinating Care and Support for Individuals Living in their Own Homes	8
Promoting Care and Support for Individuals Living in their Own Homes	10
Promoting Care and Support for Individuals Living in Care Home Settings	13
Promoting Support for Individuals Living with Dementia	11
Supporting Individuals with the Use of Electronic Assistive Technology	4
Providing Support for Individuals to Achieve Reablement Outcomes	5
Supporting Individuals who Misuse Substances	7
Supporting Individuals Living in an Adult Placement/Shared Lives Arrangement	5
Promoting Support for Individuals with a Learning Disability and/or Autism	8
Supporting Individuals Living with Mental Ill-health	7
Supporting Individuals with a Physical Impairment	4
Supporting Individuals with an Acquired Brain Injury	8
Contributing to the Support of Individuals who Misuse Substances	4

#### Optional group B

Unit Title	Credits
Taking Venous Blood Samples from Adults	3
Providing Care for Adults Living with Cancer	4
Palliative and End of Life Care for Adults	7
Undertaking Stoma Care	3
Undertaking Non-complex Wound Care	4
Administering Adrenaline Auto-injections	3
Facilitate Group Learning	4
Supporting Individuals with Enteral Feeding	3

# Apprenticeship Overview



## Timeframes

The time it takes to complete the framework depends entirely on your commitment and motivation to complete the required tasks.

Generally, learners complete a Level 3 in Health and Social Care within 16 months.

Learners are encouraged to set aside approximately 2 hours per week of personal time to work towards the completion of their qualification.

Our highly experienced Trainer Coaches provide learners with all the support they require to complete their course.



## Essential Skills

Communication and Application of Number qualifications are an integral element to the funded Apprenticeship frameworks.

These are usually delivered via workshops at one of Educ8's centres and will be planned well in advance.

*\*N.B If you have completed Essential Skills previously or are able to provide other suitable proxies (i.e GCSE certificates or similar), you may be exempt from completing this element of the course.*



## Engagement Methods

Each learner will have a variety of methods in which they can engage with their Trainer Coach for their learning programme:

- One to One sessions
- Observations
- Access to Moodle platform
- Smart Assessor e-Portal
- Email submission
- Telephone support
- Smart Rooms/Facetime

The role of your Trainer Coach is to support you throughout the process to enable you to complete your qualification whilst having the best learning experience along the way.



## Delivery Methods

You will be allocated a qualified and sector-competent Trainer Coach who will visit you in your workplace on a monthly basis.

Between visits, your Trainer Coach may leave you assignments or work to complete in your own time.



## Recognition of Prior Learning (RPL)

If you have previously completed any work-based qualifications or units, any relevant work (evidenced by copies of certificates) can be mapped across to this qualification to avoid duplication of work.

Your allocated Trainer Coach will go through RPL with you in more depth during your induction.



ESQs

QCF  
Qualification



Working with Educ8 has been seamless. I have a dedicated account manager, who is able to meet with me regularly to discuss new qualifications, and how we can also engage with staff to help them gain qualifications relevant to the role that they do!

**Rhian Lewis**  
Cwm Taf University Health Board





**Get in touch!**  
**Tel: 01443 749 000**



**[www.educ8training.co.uk](http://www.educ8training.co.uk)**

