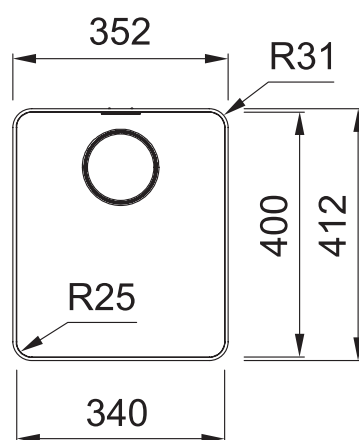


MYX2 10-34FPC MYTHOS



PRODUCT INFORMATION

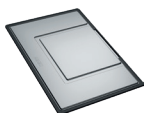
Installation	Topmount/Flushmount
Dimensions	352 x 412mm
Cabinet Base	450mm
Bowl Size	340 x 400 x 200mm/27L
Bowl Radius	25mm
Cut-Out Size	See Installation Document
Cut-Out Template	No
Waste Outlet	Semi Integrated Waste
Overflow	Yes
Tap Holes	No
Remote Waste	Yes (35mm hole required in benchtop)
Finish	Stainless Steel



1 ACCESSORIES AVAILABLE **1** ACCESSORIES INCLUDED

ACCESSORIES

1



DT 288
Extension Drainer

2



RM 081
Rollamat

3



PB 835
Push Button Remote Waste

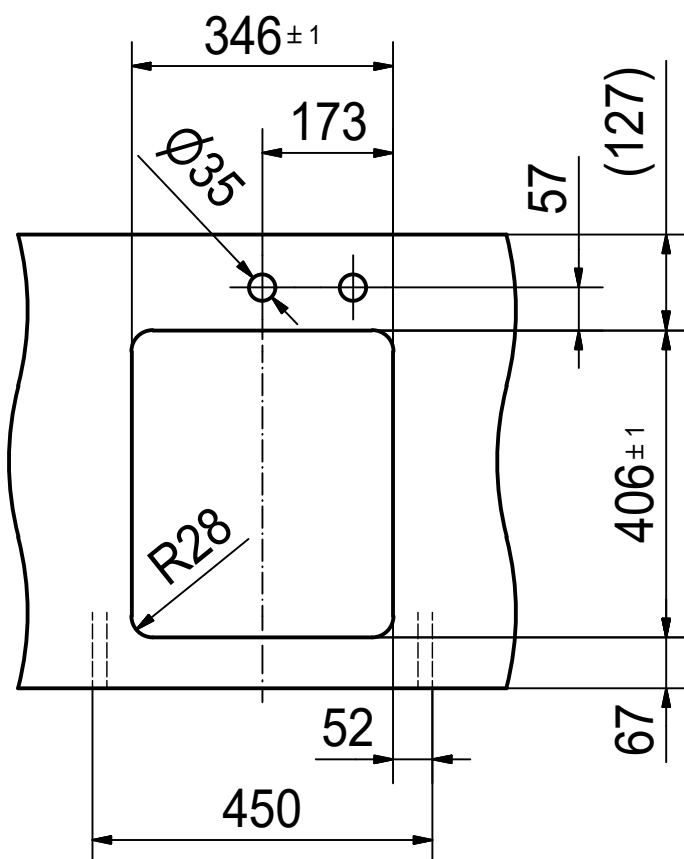
4



CBP 082
Paperstone Chopping Board

LAST UPDATED: 9 APRIL 2021

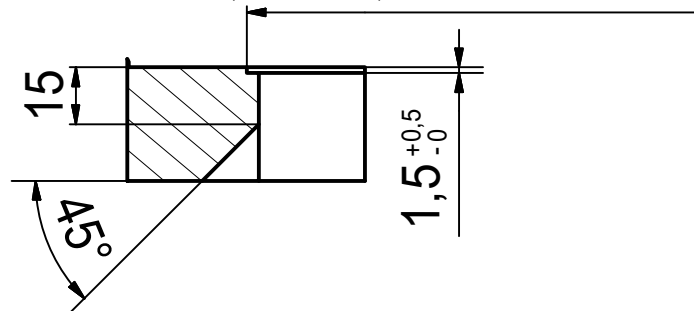
CO



for flush fit only

352.4 x 412.4 x R31.2

(tolerance: +0.5/0)



Drawing No.	20140361_01	Revision	
Drawn Date	07.06.2019		
These drawings and specifications are the property of Franke Technology and Trademark Ltd. and shall not be reproduced, copied or transferred to any third party without the prior written permission of Franke Technology and Trademark Ltd., Hergiswil, Switzerland			



MYX 210-34 I
installing document

Sheet	Sheets
3	6