

Bluetooth® and Apps

Via Bluetooth you can connect the controller/s, the remote control and the multi-purpose device as well as the Expert and User app in an easy way.



The apps provide the same functions as the remote control and the multi-purpose device (depending on the app). You can download the apps free of charge to your smartphone/tablet. The Expert app must be unlocked once with a multi-purpose device with Bluetooth.



Main Function



monocentric, automatic stance phase control with posterior offset

Activation

electromechanical locking and unlocking via motion sensors

Adjustment Options

exchangeable joint's upper part

Other Functions

mode change via lever on the cover plate, remote control or app

basic function in Auto mode

- locked in stance phase, free moving in swing phase
- range of motion in extension can be limited as required by exchanging the joint's upper part (swing phase)
- flexion angle can be adjusted as required by exchanging the joint's upper part (stance phase)

alternative function in Lock mode

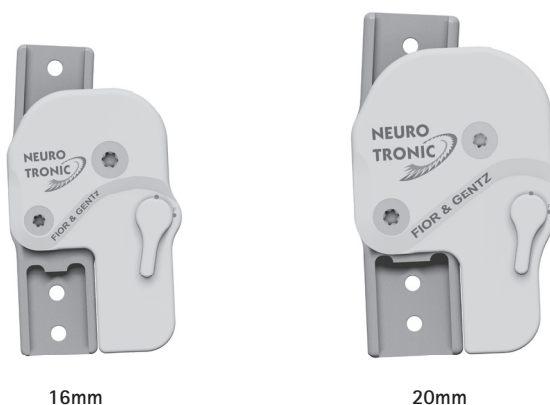
- permanently mechanically locked via remote control/app

alternative function in Free mode

- permanently mechanically unlocked via lever or electromechanically via remote control/app

The NEURO TRONIC system knee joint is convertible to the NEURO MATIC system knee joint by exchanging the cover plate and other corresponding system components.





16mm

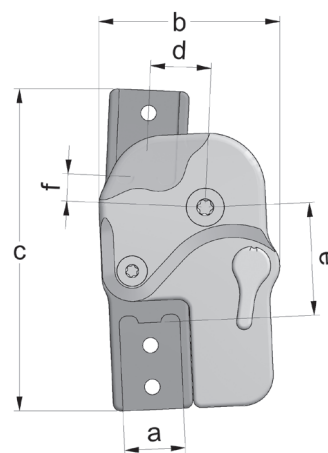
20mm

Joint Dimensions [mm]

Dimension	Description	System Width a	
		16mm	20mm
b	joint head width	47.7	55.8
c	joint height	85.1	94.6
d	posterior offset	16.0	20.0
e	distance pivot point - lower system case	29.8	32.2
f	distance pivot point - upper system case	7.2	7.8
	joint head thickness	16.5	16.5

Joint Weights [g]

Material	Unit	System Width	
		16mm	20mm
titanium	piece	126	174



The NEURO TRONIC system knee joint is delivered with the following articles:

AGOMET® F330, 5g

assembly/lamination dummy

- ➔ The component set, the remote control for the patient, the lamination dummy for the controller and the system side bars/anchors have to be ordered separately.
- ➔ You will find the component set on catalogue page F20.7.
- ➔ You will find the remote control for the patient on catalogue page F20.8.
- ➔ You will find the lamination dummy for the controller on catalogue page F20.10.
- ➔ You will find system side bars/anchors on catalogue page I1ff.

Note: you also need a multi-purpose device to put an orthosis with a NEURO TRONIC system knee joint into operation and to adjust all settings. You can adjust various orthoses with one multi-purpose device. You will find the multi-purpose device on catalogue page F20.9. After purchasing the multi-purpose device with Bluetooth, you can download the Expert app for any number of smartphones/tablets for Android and iOS and use it to adjust the orthosis. The User app is available to patients to complement their remote control and can be operated via their smartphone/tablet or their Apple Watch*.

* Apple Watch is a trademark of Apple Inc., registered in the U.S. and other countries.

straight
fig. 1bent inwards distally
fig. 2bent outwards distally
fig. 3**Straight (Fig. 1)**

Material	Leg Side	Unit	Article Number for System Width	
			16mm	20mm
titanium	left lateral or right medial	piece	SK3853-L/TI	SK3855-L/TI
	left medial or right lateral	piece	SK3853-R/TI	SK3855-R/TI

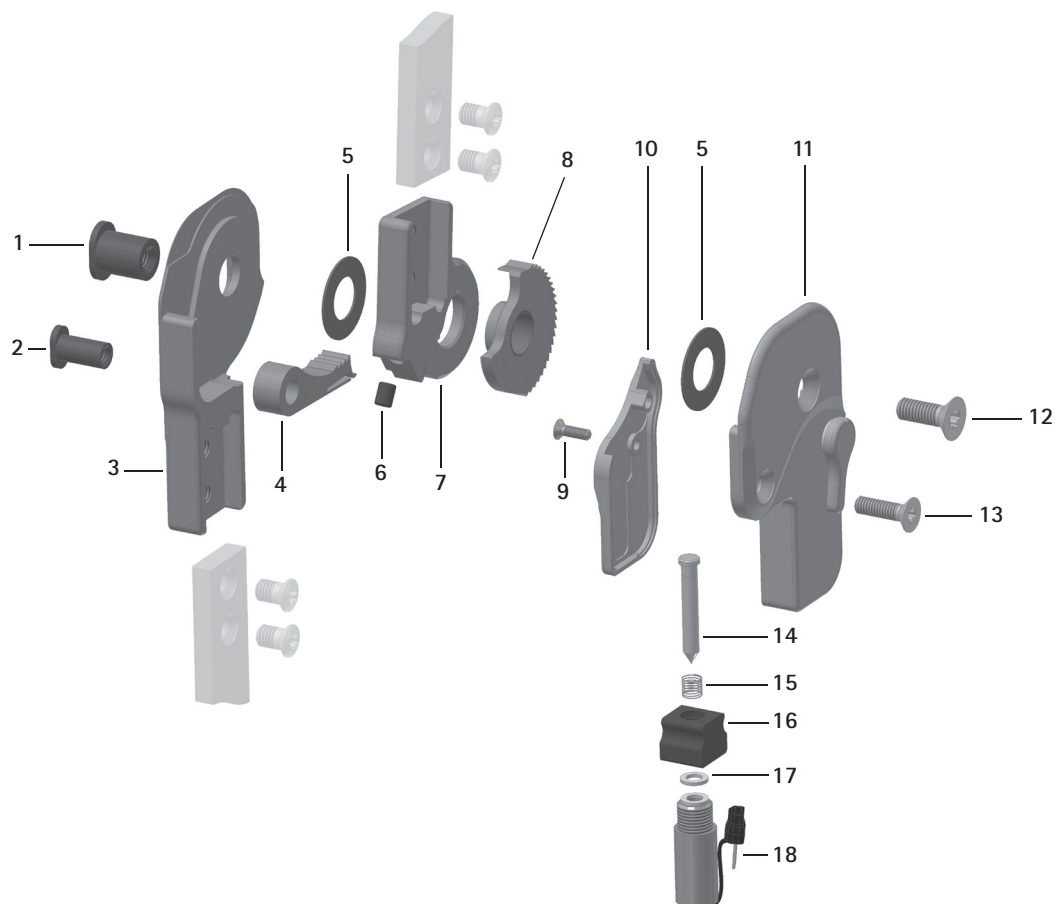
Bent Inwards Distally (Fig. 2)

Material	Leg Side	Unit	Article Number for System Width	
			16mm	20mm
titanium	left lateral or right medial	piece	SK3873-L/TI	SK3875-L/TI
	left medial or right lateral	piece	SK3873-R/TI	SK3875-R/TI

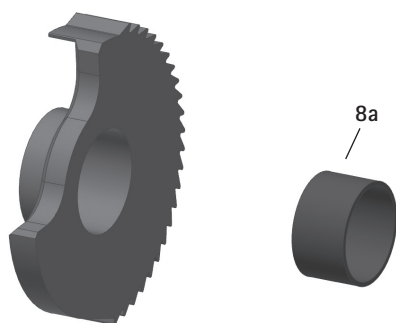
Bent Outwards Distally (Fig. 3)

Material	Leg Side	Unit	Article Number for System Width	
			16mm	20mm
titanium	left lateral or right medial	piece	SK3843-L/TI	SK3845-L/TI
	left medial or right lateral	piece	SK3843-R/TI	SK3845-R/TI

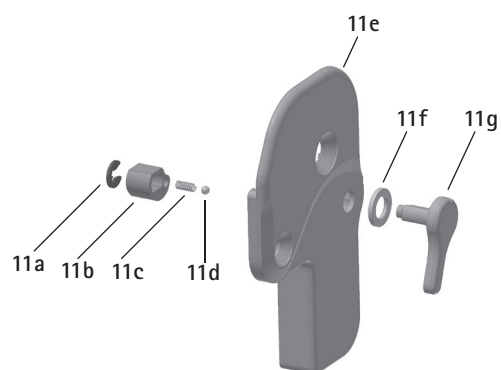
Spare Parts



Toothed Ring with Sliding Bushing, Preassembled (8)



Cover Plate with Lever, Preassembled (11)



Spare Parts			
Item	Article Number for System Width		Description
	16mm	20mm	
1	SB9669-L0990	SB1069-L1000	bearing nut (joint axis)
2	SB6049-L0990	SB8559-L1000	bearing nut (locking pawl)
3	SK0313-L/TI	SK0315-L/TI	lower part, left lateral or right medial, straight, titanium
3	SK0313-R/TI	SK0315-R/TI	lower part, left medial or right lateral, straight, titanium
3	SK0333-L/TI	SK0335-L/TI	lower part, left lateral or right medial, bent inwards, titanium
3	SK0333-R/TI	SK0335-R/TI	lower part, left medial or right lateral, bent inwards, titanium
3	SK0333-8L/TI	SK0335-8L/TI	lower part, left lateral or right medial, bent outwards, titanium
3	SK0333-8R/TI	SK0335-8R/TI	lower part, left medial or right lateral, bent outwards, titanium
4	SK0373	SK0375-2	locking pawl
5	GS1910-*	GS2411-*	sliding washer*
6	PN1000-L06	PN1000-L06	extension stop damper
7	SK0303-2L/TI	SK0305-2L/TI	5° upper part, left lateral or right medial, straight, titanium
7	SK0303-2R/TI	SK0305-2R/TI	5° upper part, left medial or right lateral, straight, titanium
8	SK0363-2L	SK0365-2L	toothed ring with sliding bushing, left lateral or right medial, titanium
8	SK0363-2R	SK0365-2R	toothed ring with sliding bushing, left medial or right lateral, titanium
8a	BP1110-L059	BP1211-L059	sliding bushing
9	SC1403-L08/1	SC1403-L08/1	countersunk flat head screw, hexalobular socket
10	SK0343-2L/AL	SK0345-2L/AL	small cover plate, left lateral or right medial, aluminium
10	SK0343-2R/AL	SK0345-2R/AL	small cover plate, left medial or right lateral, aluminium
11	SK3893-L	SK3895-L	cover plate with lever, left lateral or right medial
11	SK3893-R	SK3895-R	cover plate with lever, left medial or right lateral
11a	VE6799-23/0	VE6799-23/0	retaining washer for shafts
11b	SK0373-24/L	SK0375-24	switching pawl, left lateral or right medial
11b	SK0373-24/R	SK0375-24	switching pawl, left medial or right lateral
11c	FE1207-01	FE1207-01	pressure spring
11d	KU1002-ST	KU1002-ST	ball
11e	SK0343-1L/AL	SK0345-1L/AL	big cover plate, left lateral or right medial, aluminium
11e	SK0343-1R/AL	SK0345-1R/AL	big cover plate, left medial or right lateral, aluminium
11f	GS0905-100	GS0905-100	sliding washer for lever
11g	SK0375-23	SK0375-23	lever for switching pawl
12	SC1405-L14	SC1406-L14	countersunk flat head screw, hexalobular socket (axle screw)
13	SC1404-L14	SC1405-L14	countersunk flat head screw, hexalobular socket
14	SK0385-01	SK0385-01	plunger for solenoid
15	FE1508-02	FE1508-01	pressure spring
16	SK0383-5	SK0383-5	solenoid fixation
17	SK0385-03	SK0385-03	washer for plunger
18	SK0385-00	SK0385-00	solenoid without plunger, with connector

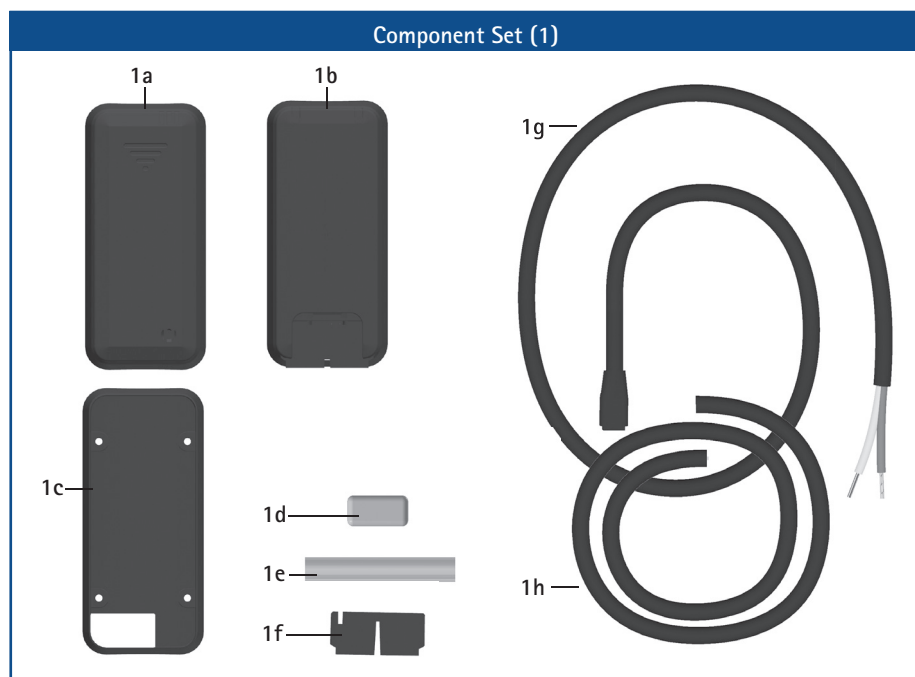
* Sliding Washers

Article Number for System Width	
16mm	20mm
Ø = 19mm	Ø = 24mm
GS1910-040	GS2411-040
GS1910-045	GS2411-045
GS1910-050	GS2411-050
GS1910-055	GS2411-055
GS1910-060	GS2411-060

The last three digits of the article number stand for the thickness of the sliding washer, e.g. GS1407-**040**. The thickness of this sliding washer is 0.40mm. In total, the sliding washers are available in five different thicknesses. The thickness of a sliding washer is indicated by the markings. For example, a sliding washer with two grooves is 0.40mm thick, whereas a sliding washer with one notch is 0.55mm thick.



→ You will find system side bars and system anchors on catalogue page I1ff.

**Component Set (without Bluetooth, with Exchangeable Batteries, 1)***

Orthosis Type	Article Number
unilateral	SK3800-LR
bilateral	SK3800

Component Set (with Bluetooth and Exchangeable Batteries, 1)*

Orthosis Type	Article Number
unilateral	SK3845-LR
bilateral	SK3845

Component Set (with Bluetooth and Integrated Lithium-Polymer Battery, 1)*

Orthosis Type	Article Number
unilateral	SK3840-LR
bilateral	SK3840

Component Set

Item	Article Number for System Width		Description	Unit	Quantity	
	16mm	20mm			unilateral	bilateral
1a	ET3830*	ET3830*	controller without Bluetooth with exchangeable batteries*	piece	1	1
1a	ET3845*	ET3845*	controller with Bluetooth with exchangeable batteries*	piece	1	1
1b	ET3840*	ET3840*	controller with Bluetooth with lithium-polymer battery*	piece	1	1
1c	KG0382-5**	KG0382-5**	retainer for controller**	piece	1	1
w/o fig.	SC1302-L06***	SC1302-L06***	countersunk flat head screw, cross recessed H***	piece	4	4
1d	SK0935-06	SK0935-06	lamination dummy for cable cover guidance	piece	1	2
1e	SK0935-05	SK0935-05	cable cover conduit made of plastic	piece	1	2
1f	KG0384-09****	KG0384-09****	cable connecting aid****	piece	1	1
1g	ET0420-5	ET0420-5	connection cable for solenoid, tinned ends, 360mm	piece	1	2
1h	SK0935-00	SK0935-00	lamination dummy for solenoid connection cable	piece	1	2
w/o fig.	OB1000-XL	OB1000-XL	cloth bag for orthoses with logo	piece	1	1

* Only one controller is included in each component set. Therefore, you need to select the appropriate controller for you.

** Is part of the controller.

*** Are required for mounting the controller retainer and are supplied with the controller.

**** Is part of the controller with lithium-polymer battery.

Connection Cable for Solenoid

Item	Article Number for System Width		Description	Unit
	16mm	20mm		
w/o fig.	ET0420-4	ET0420-4	connection cable for solenoid, 550mm	piece

Remote Control, with or without Bluetooth, One Leg (2)



Remote Control with Bluetooth, One Leg (3)



Remote Control, with or without Bluetooth, for the Controller(s) with Exchangeable Batteries

Item	Article Number	Description	Unit	Quantity	
				One Leg	Both Legs
2	SK3800-P	remote control set for the patient	set	1	-
w/o fig.	SK3800-P/2	remote control set for the patient	set	-	1
2	SK3845-P	remote control set with Bluetooth for the patient	set	1	-
w/o fig.	SK3845-P/2	remote control set with Bluetooth for the patient	set	-	1
2a	ET0890	battery box	piece	1	1
2b	PR4000	lanyard FIOR & GENTZ	piece	1	1
2c	ET0850	microprocessor-controlled quick charger including plug-in adapter, USB charging cable and 12V car adaptor	piece	1	1
2d	ET3800-P	remote control for the patient	piece	1	2
w/o fig.	ET3840-P	remote control with Bluetooth for the patient	piece	1	2
2e	ET0810-AA2	2 pce. AA NiMH rechargeable batteries with number stickers	set	3	6
w/o fig.	PA0800-ET	number stickers to mark rechargeable batteries	set	1	1
w/o fig.	HE3800-SK/L	letter sticker L for remote control, left leg	piece	-	1
w/o fig.	HE3800-SK/R	letter sticker R for remote control, right leg	piece	-	1

Remote Control with Bluetooth for the Controller(s) with Integrated Lithium-Polymer Battery

Item	Article Number	Description	Unit	Quantity	
				One Leg	Both Legs
3	SK3840-P	remote control set with Bluetooth for the patient	set	1	-
w/o fig.	SK3840-P/2	remote control set with Bluetooth for the patient	set	-	1
3a	ET0710	USB charging cable	piece	1	2
3b	PR4000	lanyard FIOR & GENTZ	piece	1	1
3c	ET3840-P	remote control with Bluetooth for the patient	piece	1	2
3d	ET0780	USB adapter	piece	1	2
w/o fig.	HE3800-SK/L	letter sticker L for remote control, left leg	piece	-	1
w/o fig.	HE3800-SK/R	letter sticker R for remote control, right leg	piece	-	1

Upper Parts (4)

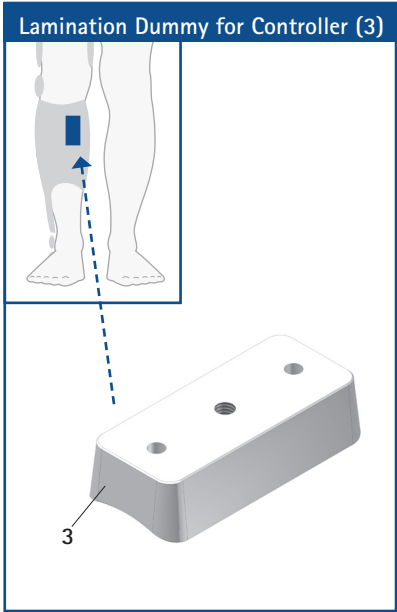


Upper Parts

Item	Article Number for System Width		Description
	16mm	20mm	
4	SK0303-L/TI	SK0305-L/TI	0° upper part, left lateral or right medial, straight, titanium
4	SK0303-R/TI	SK0305-R/TI	0° upper part, left medial or right lateral, straight, titanium
4	SK0303-4L/TI	SK0305-4L/TI	10° upper part, left lateral or right medial, straight, titanium
4	SK0303-4R/TI	SK0305-4R/TI	10° upper part, left medial or right lateral, straight, titanium

➔ You will find an overview of our tools on catalogue page J1ff.

Note: you can adjust **various** orthoses with **one** multi-purpose device.



Lamination Dummy for Controller				
Item	Article Number for System Width		Description	Unit
	16mm	20mm		
3	ET0932	ET0932	lamination dummy for controller	piece