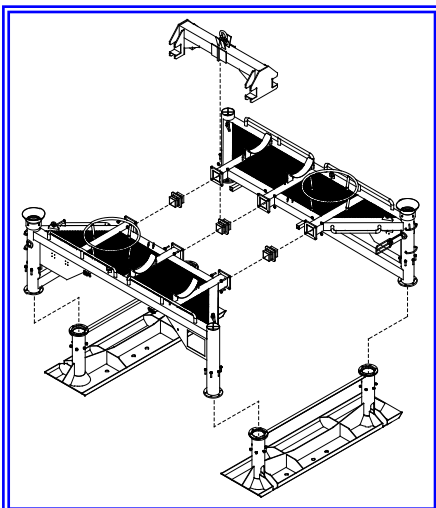


The **Flying Lead Deployment Frame** is purpose made arrangement for deployment of multiple Hydraulic and Electrical/Optical Flying Leads in one single run. It is available on a **Purchase** basis.



Construction & Certification

- High Load Capacity – WLL 25 Mt.
- Designed and Certified to DnV 2.7-1.
- Made from steel profiles, plates and glass fibre grating.
- Single and four-parted sling lift options incorporated in the design.
- Size – 6.4 m x 4.3 m and a height of 3.7 m.



Features

- Suitable for deployment of multiple hydraulic and / or electrical flying leads in one single run (e.g. 4 off).
- Ideal for hydraulic jumper that uses rigid steel / duplex tubes that has limited acceptable bending radius.
- Includes location for parking plates / receptacles for the flying leads. Required ROV tooling interface will be included as required (e.g. TDU).
- Provided with foundation plates / trays for seabed support. Holes included in bottom plate in order to reduce seabed suction effects.
- GRP grating included on top in order to provide safe access to the lifting points.
- For the single leg lift option, the shackle interface permit easy disconnection and re-connection of a deployment wire with ROV hook or similar (i.e. includes shackle positioner).
- Designed for road transportation as the assembly can be disassembled if required.
- The flying leads are suspended within the frame using ropes attached to a low friction spheres that are inserted into a suspension rail on the structure.
- Includes ROV grabbers, securing pins etc. required for the operation of the deployment frame.

Contacts

Udeco AS
 Mekjarvik 2
 N-4073 Randaberg, Norway
 Switchboard: + 47 51 41 61 00
 E-Mail: Postmaster@udeco.no
 Web: <http://www.udeco.no>