

## CANTON DAWN PATROL

The Saturday Dawn Patrol flight has traditionally been the highlight of the National Stearman Fly-In. We urge all Stearman pilots to plan to participate in this event.

The Canton Ingersoll Airport is located 1 1/4 miles west of the city of Canton, Illinois which is 27NM from the Galesburg Municipal Airport on a magnetic course of 142 degrees. There are two paved runways, oriented north/south and east/west.

All Stearmans should be prepared for flight and a take-off at official sunrise. Those Stearmans that are equipped with lights and are legal for night flight are requested to remain on the ground until official sunrise and take-off with the other Stearmans.

After take-off Stearmans should form up in loose formation groups (recommend groups of 4 to 6 airplanes) or fly individually and then proceed southeast to the Canton Airport.

Stearmans should attempt to fly over the small town of Fairview just northwest of the Canton Airport to enter the pattern for landing. (Note: Fairview is not identified by a symbol on the map but is easily identifiable by the tanks to the west and double towers to the east.) Radio equipped Stearmans should call Unicom on 122.8 to obtain landing runway information. All Stearmans should depart Fairview to the south and turn east at Highway 9 (do not fly over the prison) and enter the appropriate runway traffic pattern from the south. All runway traffic patterns will be entered from the south side of the Canton Airport. (See the attached traffic pattern diagrams.)

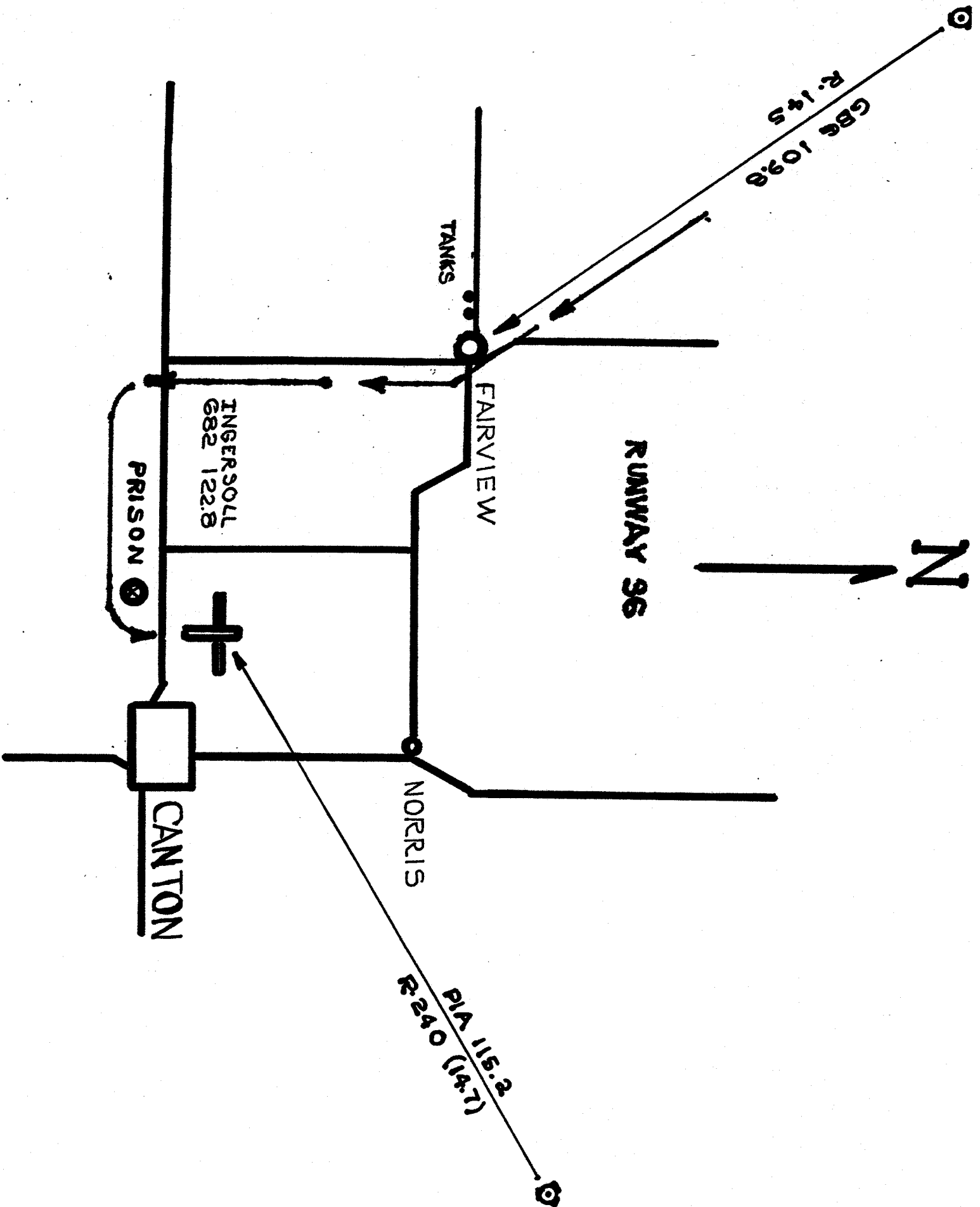
Aircraft should space individually for landing on the **HARD SURFACED RUNWAY**. Formation landings are **NOT PERMITTED!** Pilots should be alert for other aircraft. Stearmans will be parked in the grass area near the wind sock.

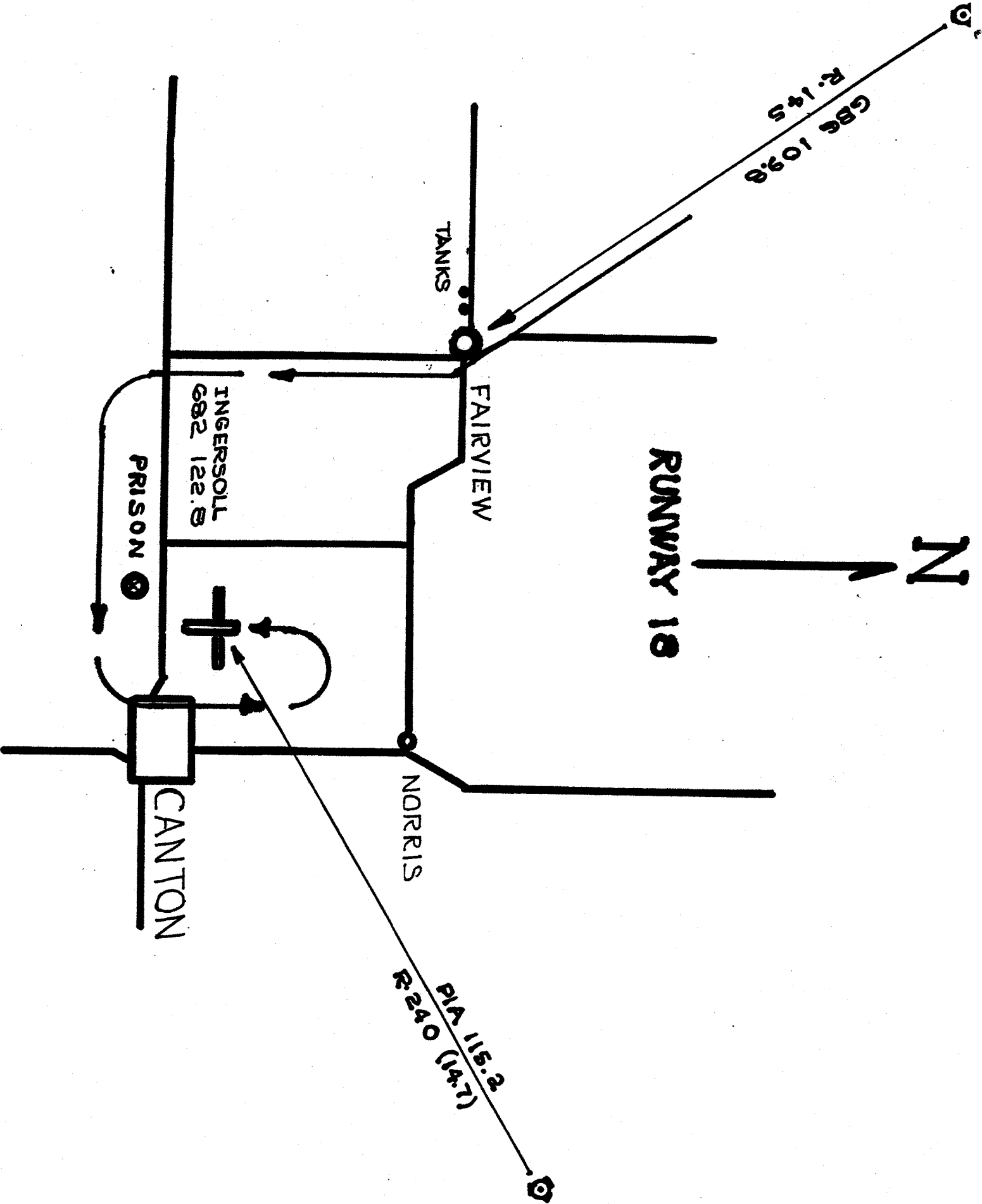
Breakfast will be served to the Stearman Fly-In participants at the airport by the Fulton County Flying Club.

Departure after breakfast will be individually or as arranged by each pilot.

**FLY SAFELY - FLY COURTEOUSLY - REMEMBER - THE FEDS ARE EVERYWHERE!**







GBG 109.8  
R. 14.5

TANKS

FAIRVIEW

RUNWAY 18

N

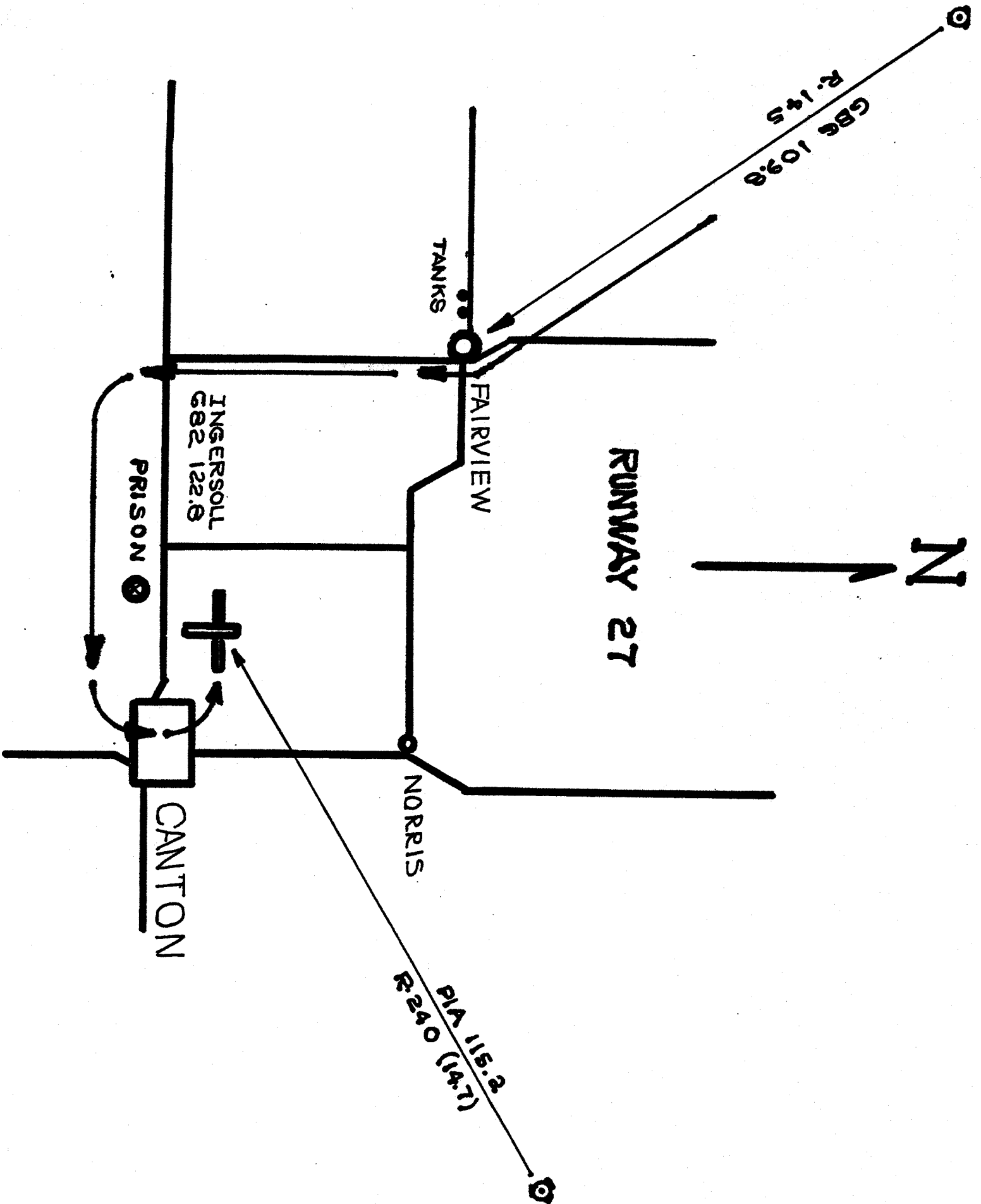
INGERSOLL  
GB2 122.8

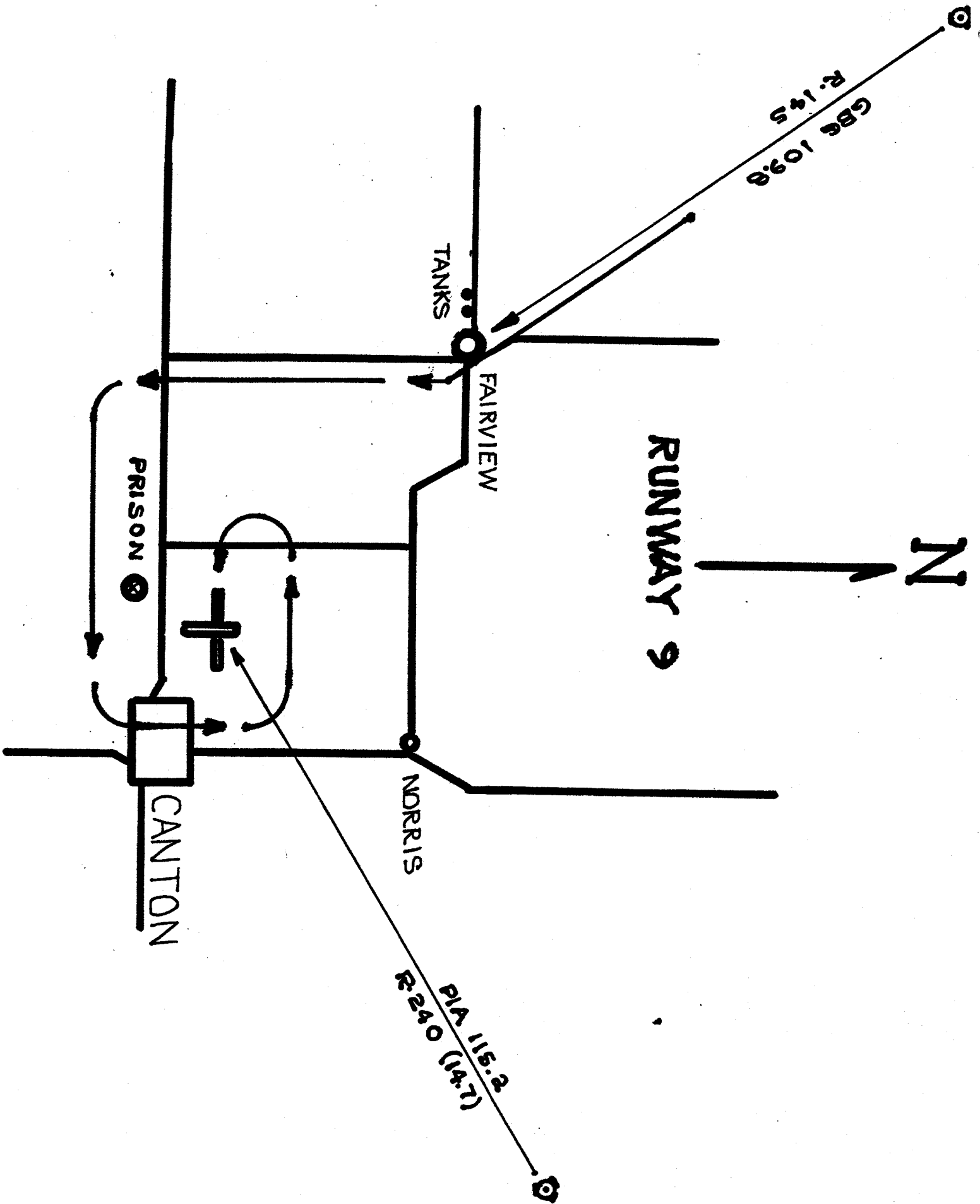
PRISON

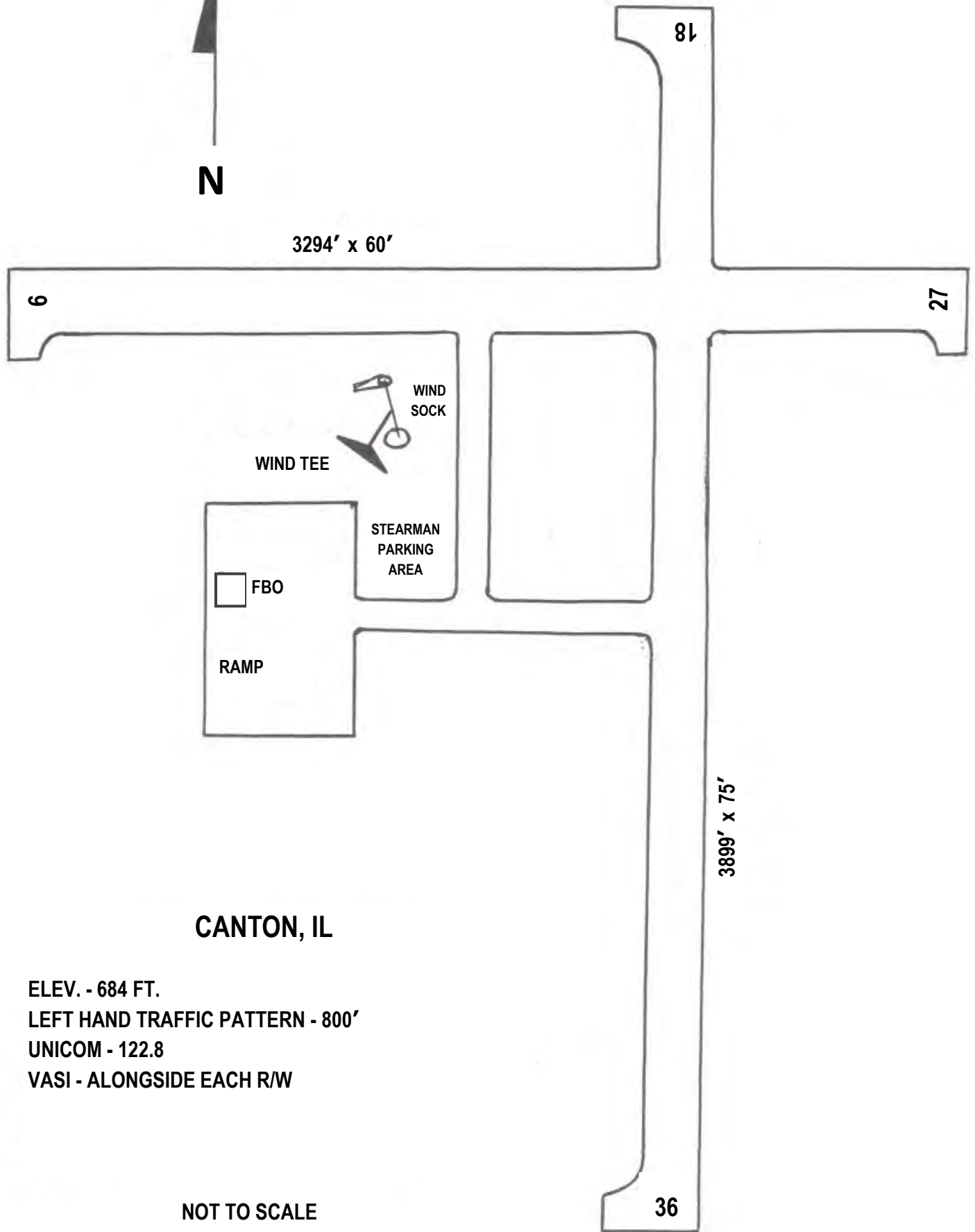
CANTON

NORRIS

PIA 115.2  
R. 24.0 (14.7)



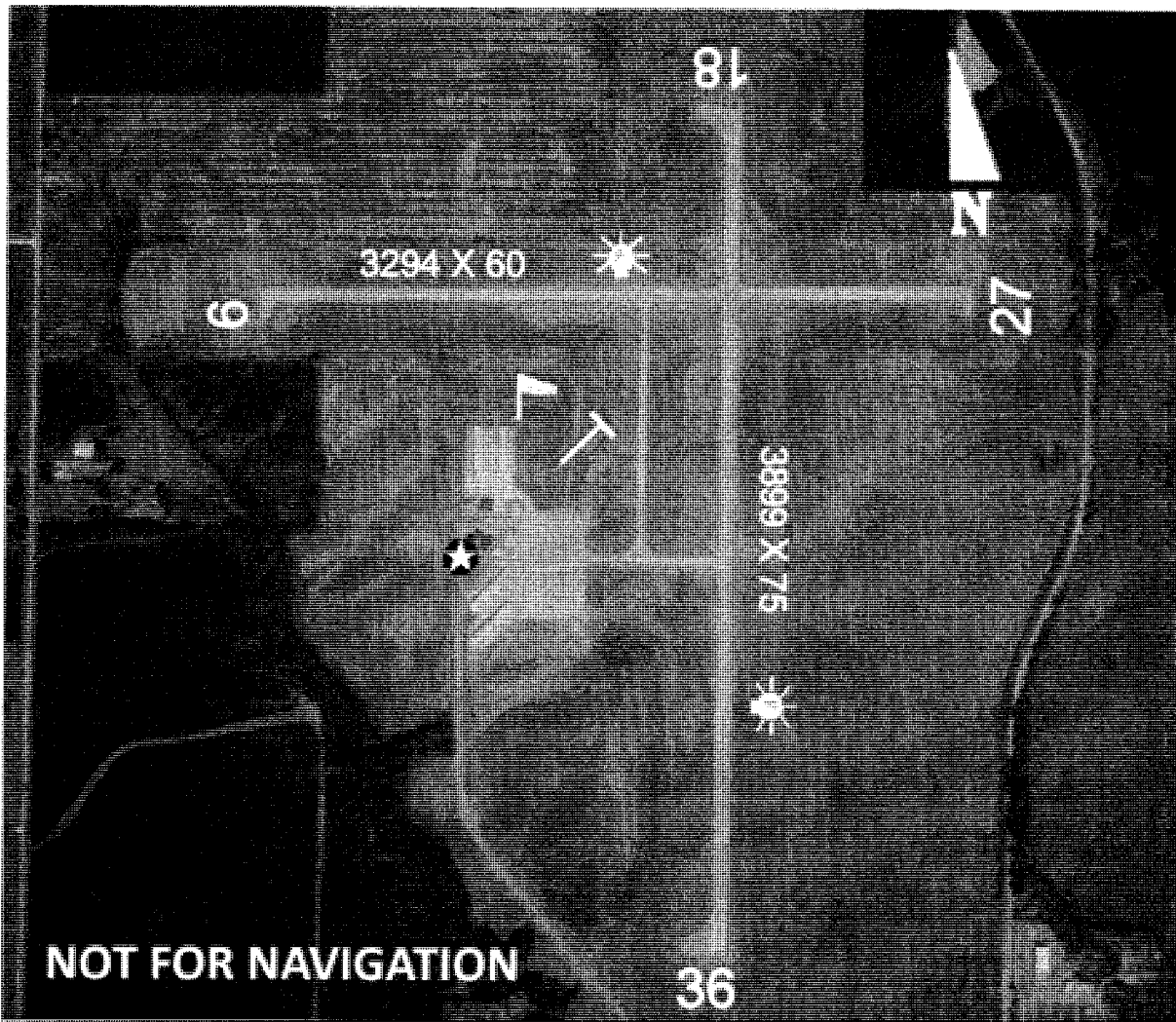




**CANTON, IL**

ELEV. - 684 FT.  
LEFT HAND TRAFFIC PATTERN - 800'  
UNICOM - 122.8  
VASI - ALONGSIDE EACH R/W

NOT TO SCALE



Latitude	Longitude	Elevation	Mi from CBD
40°34'08.7"	90°04'29.4"	684'	2 NW

Runway	09/27	18/36
Length	3,294'	3,899'
Width	60'	75'
Surface	Asphalt	Asphalt
Rwy Lights	MIRL	MIRL
Apch Lights		/ REIL
VGSI		
<b>Location</b>		
PIA (115.2) r239 14.5 nm		

Frequencies		NAV
CTAF	122.8	RNAV
UNICOM		GPS
Lights		NDB
Weather	122.8	
ATIS		
Approach	124.675 (PIA)	
Tower		<b>Fuel</b>
Ground		100LL
Clnc Del		
RSS/RCO		