

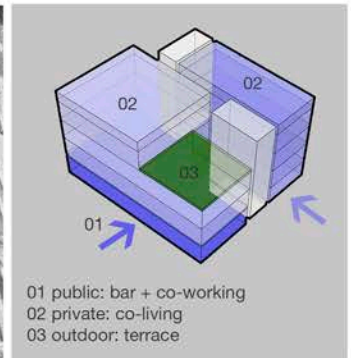
04 level



02-03 level



01 level



TRAVESSA DOS INGLESINHO Nº 7-11 BAIRRO ALTO LISBOA

Development strategy

The building (≈530m²) has a convenient corner location and consists of two blocks. The quiet area in the Central part of Lisbon is ideal for adapting a residential building to a new type of housing – co-living. The co-living format is aimed at young professionals who follow the digital nomad lifestyle. The young people are focused on living from a few months to several years in small-sized habitation (personal space) with the possibility of using common areas with like-minded people and quiet areas for work.

This format is particularly relevant for Lisbon in connection with the state policy on attracting investment in start-up industries. For example, there are special tax conditions, visa requirements, and major events such as Web-summit (70K+ participants from all over the world). The adaptation project provides a public co-working+bar and a private block: residential unites and common spaces for guests, including a roof terrace.

OFFERED AT ≈ € 1,728,000

MT.A+M.Rukavishnikova
mtarchitects.ru

Adaptive re-use project for 4-floor coliving housing with a bar and rooftop terrace.

mtarchitects.ru
milatitova@mtarchitects.ru