

**Contents.**

**Drawing**

- PLA241-L01 Contents, Context Plan and Plant Schedule
- PLA241-L02 Street Landscape Plan 1
- PLA241-L03 Street Landscape Plan 2

TP1	Town Planning Approval	AD	02.10.18
P4	Revisions re power and HBN plans	AD	10.09.18
P3	Revisions based on P301m Power plans	AD	10.09.18
P2	Power Designer Review	AD	25.07.18
P1	Client Review	AD	16.07.18
Issue	Description	Issue	Date
<b>APPROVAL ISSUE</b>			

**Notes**  
 PLANNING PERMIT NUMBER: DS/546/2012

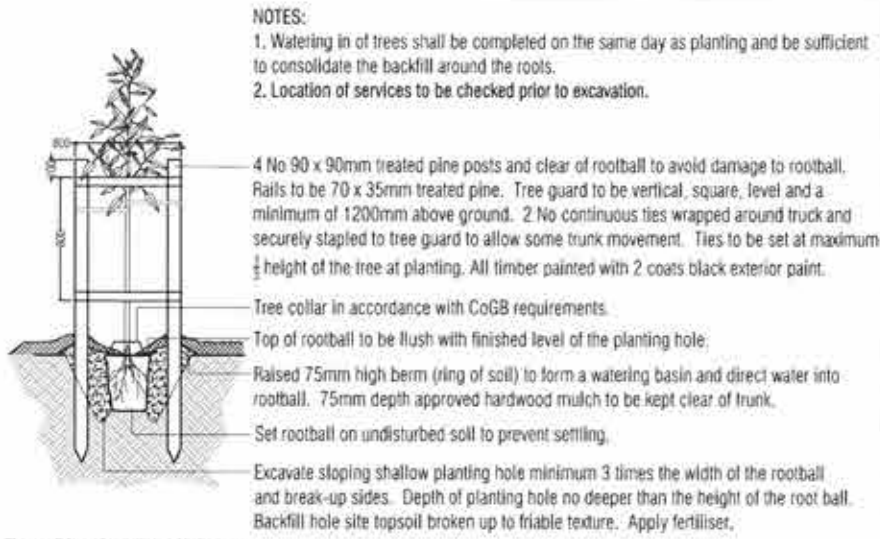
- All dimensions to be checked on site before commencing work. All measurements are in metres, unless otherwise shown.
- The locations of underground services and light poles are indicative only - refer to electrical plans for electrical and service offsets.
- The location and depth of services shall be verified on site prior to the commencement of works. The Contractor shall be liable for any damage to services during the landscape works.
- Standard Street Tree Offsets:
  - It is assumed that all Underground Cable in close proximity to the "tree zone" (5m diameter x 600mm depth) shall be within conduits or have cover slabs to provide a higher level of infrastructure protection. (Refer 12.0 Distribution Construction Standard Underground Trenching GA211 by Citypower and Powercor).
  - Minimum setback of 2.0m to service assets including pits and conduit crossings.
  - Minimum setback of 0.75m to domestic service tapping points and 2.0m to stormwater outlets.
  - Minimum setback of 1.0m to footpath crossings and 3.0m to driveways where they are existing or known.
  - Minimum setback of 3.0m to fire hydrants.
  - Minimum setback of 4.0m to light poles.
- Proposed Street Trees:
  - Where possible, trees are planted to allow a driveway within 7.0m from the Title Boundary.
  - Tree position in front of lots may change slightly due to "actual" location of services, and constructed driveway crossings.
  - Setback from intersection (kerb) shall be a minimum of 10m.
- Existing Trees: The Contractor shall confirm and protect any existing vegetation during landscape works.
- Planting: All trees shall be planted in accordance with typical details, unless otherwise specified.
- Mulch: Street Tree Mulch shall be recycled hardwood (or similar approved) unless otherwise specified.
- Grass Seeding: Reseed nature strips and other grassed areas where there has been disturbance due to landscape works with a proprietary hardy mix, unless otherwise specified.

**Plant Schedule.**

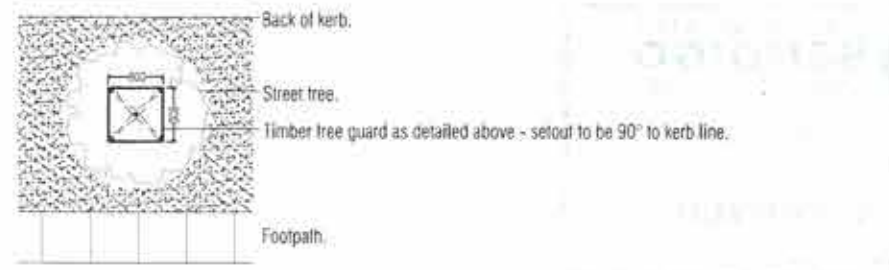
**Street Trees**

Code	Botanical Name	Common Name	Planting Size	Quantity
ACO	<i>Angophora costata</i>	Smooth-barked Apple Myrtle	16 ltr container	7
EMM	<i>Eucalyptus mannifera ssp. maculosa</i>	Red Spotted Gum	16 ltr container	13
UPA	<i>Ulmus parvifolia 'Burnley Select'</i>	'Burnley Select' Chinese Elm	40-45 ltr container	18

**Typical Tree Planting Detail**

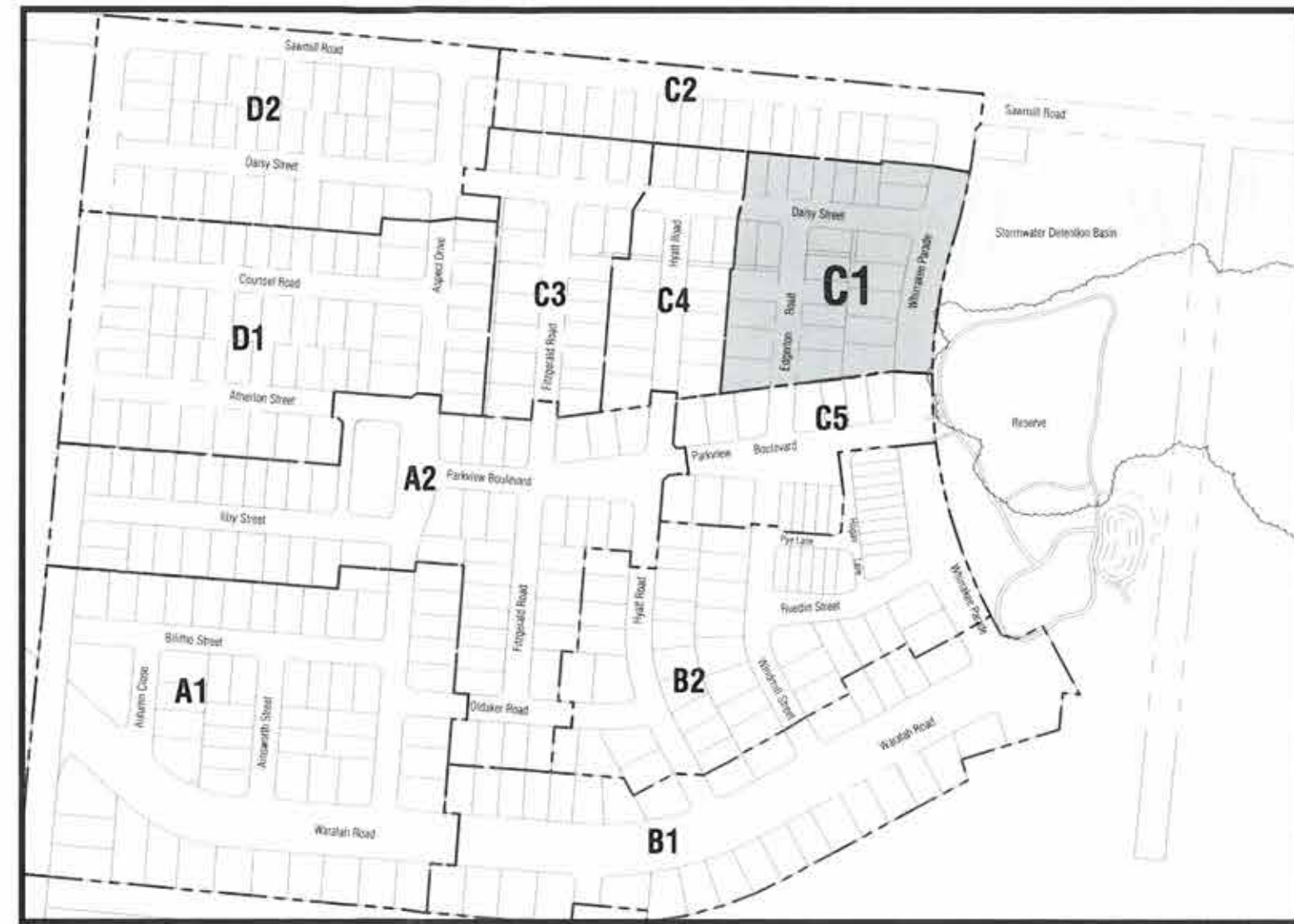


Tree Planting Detail (nts).



Tree Guard Setout (nts).

**Stage C1, ViewPoint - Context Plan (nts).**



Viewpoint - Stage C1  
 Huntly, Bendigo

**Integra**

Contents, Context Plan and Plant Schedule

Issue	Approved	Date	Notes
AD	RH	02.10.18	
Issue No.	Issue Date	Page No.	Page Count
NTS	NTS	1 of 3	

PLA241-L01 TP1

TP1	Town Planning Approval	AD	02.10.18
P4	Revisions re: power and NBN plans	AD	10.09.18
P3	Revisions based on Prelim. Power plan	AD	10.09.18
P2	Power Design Review	AD	25.07.18
P1	Client Review	AD	16.07.18
Revision	Drawn by	AD	16.07.18
	Checked by	AD	16.07.18

**APPROVAL ISSUE**

- Notes**
- PLANNING PERMIT NUMBER: DS/546/2012
- All dimensions to be checked on site before commencing work. All measurements are in metres, unless otherwise shown.
  - The locations of underground services and light poles are indicative only - refer to electrical plans for electrical and service offsets.
  - The location and depth of services shall be verified on site prior to the commencement of works. The Contractor shall be liable for any damage to services during the landscape works.
  - Standard Street Tree Offsets:
    - It is assumed that all Underground Cable is close proximity to the "tree zone" (5m diameter x 600mm depth) shall be within conduits of have cover slabs to provide a higher level of infrastructure protection. (Refer 12.0 Distribution Construction Standard Underground Trenching GA21" by Citypower and Powercor).
    - Minimum setback of 2.0m to service assets including pits and conduit crossings.
    - Minimum setback of 0.75m to domestic service tapping points and 2.0m to stormwater outlets.
    - Minimum setback of 1.0m to footpath crossings and 3.0m to driveways where they are existing or known.
    - Minimum setback of 3.0m to fire hydrants.
    - Minimum setback of 4.0m to light poles.
  - Proposed Street Trees:
    - Where possible, trees are planted to allow a driveway within 7.0m from the Title Boundary.
    - Tree position in front of lots may change slightly due to "actual" location of services, and constructed driveway crossings.
    - Setback from intersection (kerb) shall be a minimum of 10m.
  - Existing Trees: The Contractor shall confirm and protect any existing vegetation during landscape works.
  - Planting: All trees shall be planted in accordance with typical details, unless otherwise specified.
  - Mulch: Street Tree Mulch shall be recycled hardwood (or similar approved) unless otherwise specified.
  - Grass Seeding: Reseed nature strips and other grassed areas where there has been disturbance due to landscape works with a proprietary handy mix, unless otherwise specified.
  - Plant Schedule: Refer to sheet PLA241-L01 for Plant Schedule.

- Legend**
- Trees planted as part of another stage
  - Proposed Street Trees (*Ulmus parvifolia* 'Burnley Select') (UPA)
  - Proposed Street Trees (*Eucalyptus macrocarpa*) (EMM)
  - Proposed Street Trees (*Acropora crataea*) (ACO)
  - Alternative tree location if driveway is located where street tree is proposed.
  - Service offsets / setbacks
  - Plant Label and Code



Existing *Ulmus parvifolia* 'Burnley Select' trees planted as part of Stage C4 Streetscape Works.

Stormwater detention basin. Refer elsewhere for details.

Continued on L03




**CITY OF GREATER BENDIGO**  
 LANDSCAPE PLANS  
 25 OCT 2018  
**APPROVED**  
 Signed: 

  
**PLOT**  
 LANDSCAPE ARCHITECTS

  
 Viewpoint - Stage C1  
 Huntly, Bendigo

**Street Landscape Plan 1**

AD	RH	02.10.18
1:250	1:500	2 of 3

**PLA241-L02**      **TP1**

TP1	Town Planning Approval	AD	02.10.18
P4	Revisions re: power and NBN plans	AD	10.09.18
P3	Revisions based on Prelim. Power plan	AD	10.09.18
P2	Power Designer Review	AD	25.07.18
P1	Client Review	AD	16.07.18
Author	Georgina	Drawn	David

**APPROVAL ISSUE**

**Notes**

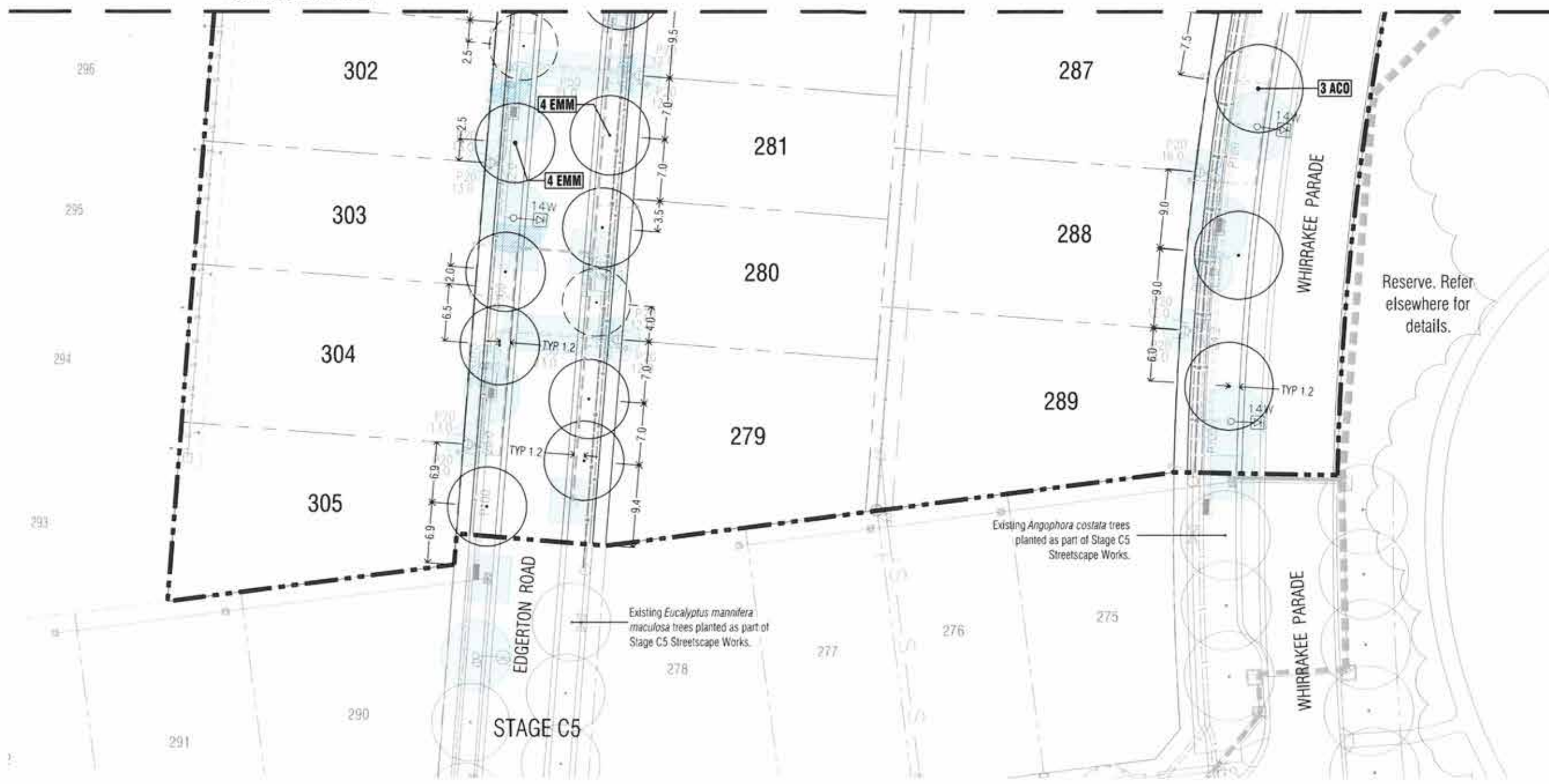
PLANNING PERMIT NUMBER: DS/548/2012

- All dimensions to be checked on site before commencing work. All measurements are in metres, unless otherwise shown.
- The locations of underground services and light poles are indicative only - refer to electrical plans for electrical and service offsets.
- The location and depth of services shall be verified on site prior to the commencement of works. The Contractor shall be liable for any damage to services during the landscape works.
- Standard Street Tree Offsets.
  - It is assumed that all Underground Cable in close proximity to the "tree zone" (5m diameter x 600mm depth) shall be within conduits or have cover slabs to provide a higher level of infrastructure protection. (Refer 12.0 Distribution Construction Standard Underground Trenching GA211 by Citypower and Powercor).
  - Minimum setback of 2.0m to service assets including pits and conduit crossings.
  - Minimum setback of 0.75m to domestic service tapping points and 2.0m to stormwater outlets.
  - Minimum setback of 1.0m to footpath crossings and 3.0m to driveways where they are existing or known.
  - Minimum setback of 3.0m to fire hydrants.
  - Minimum setback of 4.0m to light poles.
- Proposed Street Trees.
  - Where possible, trees are planted to allow a driveway within 7.0m from the Title Boundary.
  - Tree position in front of lots may change slightly due to actual location of services, and constructed driveway crossings.
  - Setback from intersection (kerb) shall be a minimum of 10m.
- Existing Trees. The Contractor shall confirm and protect any existing vegetation during landscape works.
- Planting. All trees shall be planted in accordance with typical details, unless otherwise specified.
- Mulch. Street Tree Mulch shall be recycled hardwood (or similar approved) unless otherwise specified.
- Grass Seeding. Reseed native strips and other grassed areas where there has been disturbance due to landscape works with a proprietary hardy mix, unless otherwise specified.
- Plant Schedule. Refer to sheet PLA241-L01 for Plant Schedule.

**Legend**

- Trees planted as part of another stage.
- Proposed Street Trees (Eucalyptus mannifera sub maculosa) (EMM)
- Proposed Street Trees (Angophora costata) (ACO)
- Alternative tree location if driveway is located where street tree is proposed.
- Service offsets / setbacks
- Plant Label and Code

Continued on L02



Reserve. Refer elsewhere for details.



Client: **Integra**

Viewpoint - Stage C1  
Hunty, Bendigo

Drawing Title: **Street Landscape Plan 2**

Date	Appr'd	Date	Rev
AD	RH	02.10.18	

Scale (A1)	Scale (A2)	Sheet
1:250	1:500	3 of 3

Drawing Number: **PLA241-L03**      **TP1**