

Contents.

Drawing

- PLA069-L01 Contents, Context Plan and Plant Schedule
- PLA069-L02 Street Landscape Plan
- PLA069-L03 Reserve Area Landscape Plan
- PLA069-L04 Existing Tree Area Enlargement

TP2 - Town Planning Approval	HH	29.11.18
TP1 - Town Planning Approval	AD	09.02.16
P1 - Preliminary Issue	AD	07.12.15
Preparer: Designer	Issue:	Doc
APPROVAL ISSUE		

Notes

- All dimensions to be checked on site before commencing work. All measurements are in metres, unless otherwise shown.
- The locations of underground services and light poles are indicative only - refer to electrical plans for electrical and service offsets.
- The location and depth of services shall be verified on site prior to the commencement of works. The Contractor shall be liable for any damage to services during the landscape works.
- Standard Street Tree Offsets:**
 - It is assumed that all Underground Cable in close proximity to the "tree zone" (5m diameter x 600mm depth) shall be within conduits or have cover slabs to provide a higher level of infrastructure protection. ("Refer 12.0 Distribution Construction Standard (Underground Trenching G4211" by Citypower and Powercor).
 - Minimum setback of 2.0m to service assets including pits and conduit crossings.
 - Minimum setback of 2.0m to domestic service tapping points and stormwater outlets.
 - Minimum setback of 1.0m to footpath crossings and 3.0m to driveways where they are existing or known.
 - Minimum setback of 3.0m to fire hydrants.
 - Minimum setback of 5.0m to light poles.
- Proposed Street Trees:**
 - Where possible, trees are planted to allow a driveway within 7.0m from the Title Boundary.
 - Tree position in front of lots may change slightly due to "actual" location of services, and constructed driveway crossings.
 - Setback from intersection (kerb) shall be a minimum of 10m.
- Existing Trees:** The Contractor shall confirm and protect any existing vegetation during landscape works. Mulch under trees shall be 50mm Eukie Mulch or similar approved.
- Planting:** All trees, shrubs and groundcovers shall be planted in accordance with typical details, unless otherwise specified.
- Mulch:** Street Tree mulch shall be recycled hardwood (or similar approved). "Rush mulch" shall be used in reserves unless otherwise approved.
- Grass Seeding:** Reseed nature strips and other grassed areas where there has been disturbance due to landscape works with a proprietary "hardy" seed mix or as otherwise approved.
- Turf:** Turf shall be as specified by City of Greater Bendigo.

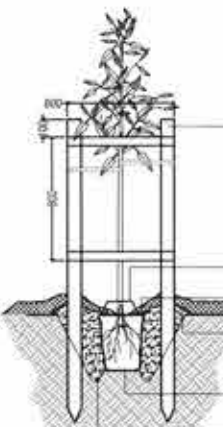
Master Plant Schedule.

Street Trees				
Code	Botanical Name	Common Name	Planting Size	Quantity
ACO	<i>Angophora costata</i>	Smooth-barked Apple	16 ltr container	18
BJR	<i>Brachychiton populneus x acerifolius</i> 'Jerilderie Red'	Jerilderie Red Brachychiton	40-45 ltr container	14
EMC	<i>Eucalyptus microcarpa</i>	Grey Box	16 ltr container	5
EMA	<i>Eucalyptus mannifera</i> ssp. <i>maculosa</i>	Red Spotted Gum	16 ltr container	5
UPA	<i>Ulmus parvifolia</i>	Chinese Elm	40-45 ltr container	5

Typical Tree Planting Detail

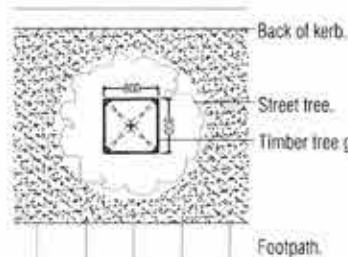
NOTES:

- Watering in of trees shall be completed on the same day as planting and be sufficient to consolidate the backfill around the roots.
- Location of services to be checked prior to excavation.



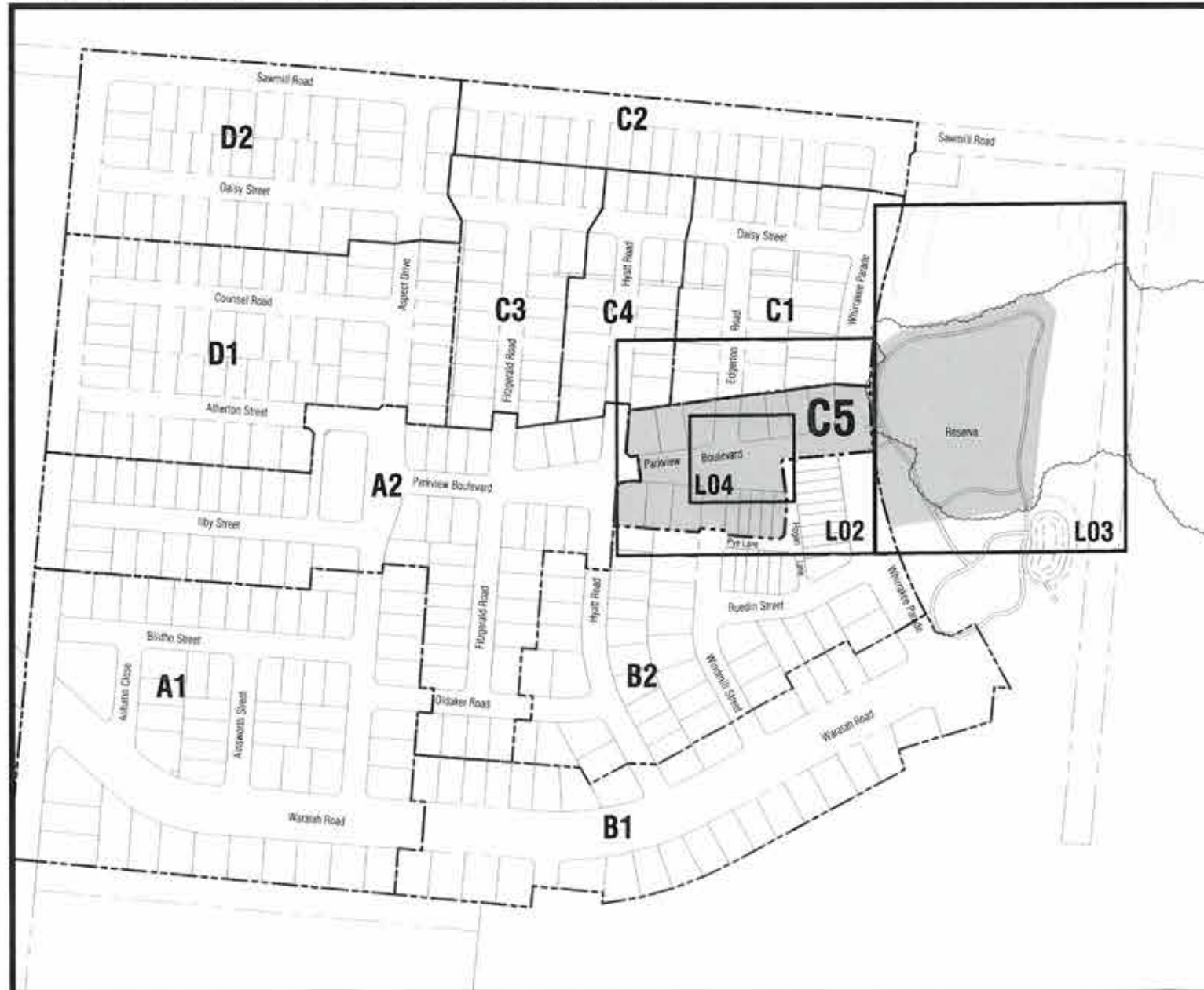
- 4 No 90 x 90mm treated pine posts and clear of rootball to avoid damage to rootball. Rails to be 70 x 35mm treated pine. Tree guard to be vertical, square, level and a minimum of 1200mm above ground. 2 No continuous ties wrapped around trunk and securely stapled to tree guard to allow some trunk movement. Ties to be set at maximum 1/3 height of the tree at planting. All timber painted with 2 coats black exterior paint.
- Tree collar in accordance with CoGB requirements.
- Top of rootball to be flush with finished level of the planting hole.
- Raised 75mm high berm (ring of soil) to form a watering basin and direct water into rootball. 75mm depth approved hardwood mulch to be kept clear of trunk.
- Set rootball on undisturbed soil to prevent settling.
- Excavate sloping shallow planting hole minimum 3 times the width of the rootball and break-up sides. Depth of planting hole no deeper than the height of the root ball. Backfill hole site topsoil broken up to friable texture. Apply fertiliser.

Tree Planting Detail (nts).



Tree Guard Setout (nts).

Stage C5, ViewPoint - Context Plan & Sheet Layout (nts).



Client: Huntly

Integra

Viewpoint - Stage C5
Huntly, Bendigo

Drawing Title: Contents, Context Plan and Plant Schedule

Approval: AD 29.11.2018

Scale: NTS 1 of 4

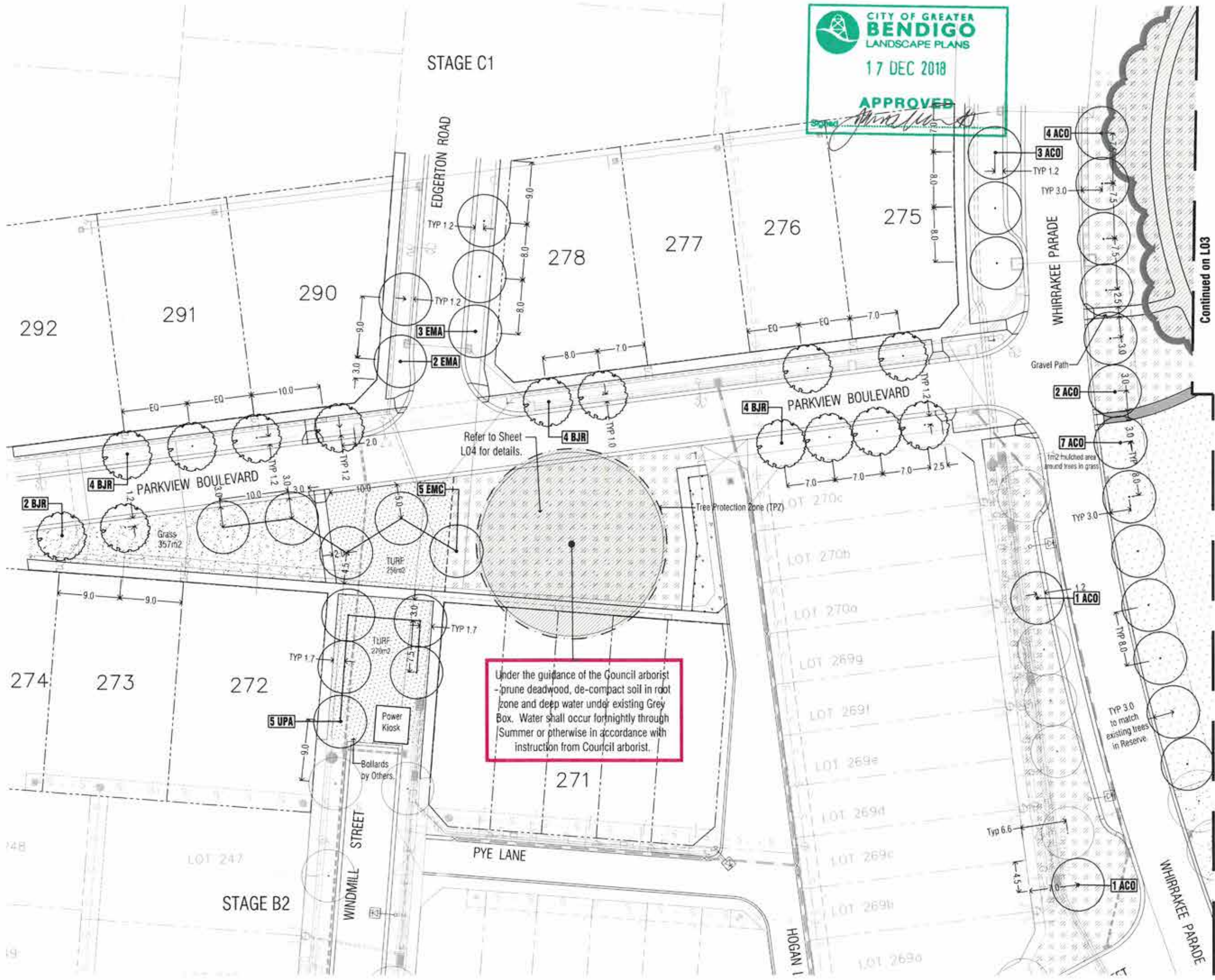
Project Number: PLA069-L01

Sheet Number: TP2



TP2	Town Planning Approval	RH	29.11.18
TP1	Town Planning Approval	AD	09.02.16
P1	Preliminary Issue	AD	07.12.15
	Prepared	AD	
	Drawn	AD	

APPROVAL ISSUE



- Notes**
- All dimensions to be checked on site before commencing work. All measurements are in metres, unless otherwise shown.
 - The locations of underground services and light poles are indicative only - refer to electrical plans for electrical and service offsets.
 - The location and depth of services shall be verified on site prior to the commencement of works. The Contractor shall be liable for any damage to services during the landscape works.
 - Standard Street Tree Offsets.
 - It is assumed that all Underground Cable in close proximity to the tree zone (1.5m diameter x 600mm depth) shall be within conduits or have cover slabs to provide a higher level of infrastructure protection. (Refer 12.0 Distribution Construction Standard Underground Trenching G4211 by Citypower and Powerco).
 - Minimum setback of 2.0m to service assets including pits and conduit crossings.
 - Minimum setback of 2.0m to domestic service tapping points and stormwater outlets.
 - Minimum setback of 1.0m to footpath crossings and 3.0m to driveways where they are existing or known.
 - Minimum setback of 3.0m to fire hydrants.
 - Minimum setback of 5.0m to light poles.
 - Proposed Street Trees.
 - Where possible, trees are planted to allow a driveway within 7.0m from the Title Boundary.
 - Tree position in front of lots may change slightly due to 'actual' location of services, and constructed driveway crossings.
 - Setback from intersection (kerb) shall be a minimum of 10m.
 - Existing Trees. The Contractor shall confirm and protect any existing vegetation during landscape works. Mulch under trees shall be 50mm Eukalyptus or similar approved.
 - Planting. All trees, shrubs and groundcovers shall be planted in accordance with typical details, unless otherwise specified.
 - Mulch. Street Tree mulch shall be recycled hardwood (or similar approved). "Bush mulch" shall be used in reserves unless otherwise approved.
 - Grass Seeding. Reseed nature strips and other grassed areas where there has been disturbance due to landscape works with a proprietary "handy" seed mix or as otherwise approved.
 - Turf. Turf shall be as specified by City of Greater Bendigo.
 - Plant Schedule. Refer to sheet L01 for Plant Schedule.

- Legend**
- Existing extent of tree canopy and individual trees to be retained.
 - Trees planted as part of another stage.
 - Proposed Street Trees.
 - Plant Label and Code.
 - Timber (Bark) Mulch.
 - Grass (seeded).
 - Turf.
 - Steel edge.

Under the guidance of the Council arborist - prune deadwood, de-compact soil in root zone and deep water under existing Grey Box. Water shall occur fortnightly through Summer or otherwise in accordance with instruction from Council arborist.

PLOT
LANDSCAPE ARCHITECTS

Integra
Viewpoint - Stage C5
Huntly, Bendigo

Street Landscape Plan

Approved	AD	Date	29.11.2018
Scale (A1)	1:250	Scale (A2)	1:500
Sheet No.	2 of 4	Project No.	PLA069-L02

TP2

TP2: Town Planning Approval	Rd: 29.11.18
TP1: Town Planning Approval	AD: 09.02.16
P1: Preliminary Issue	AD: 07.12.15
Issue Description:	Issue Date:

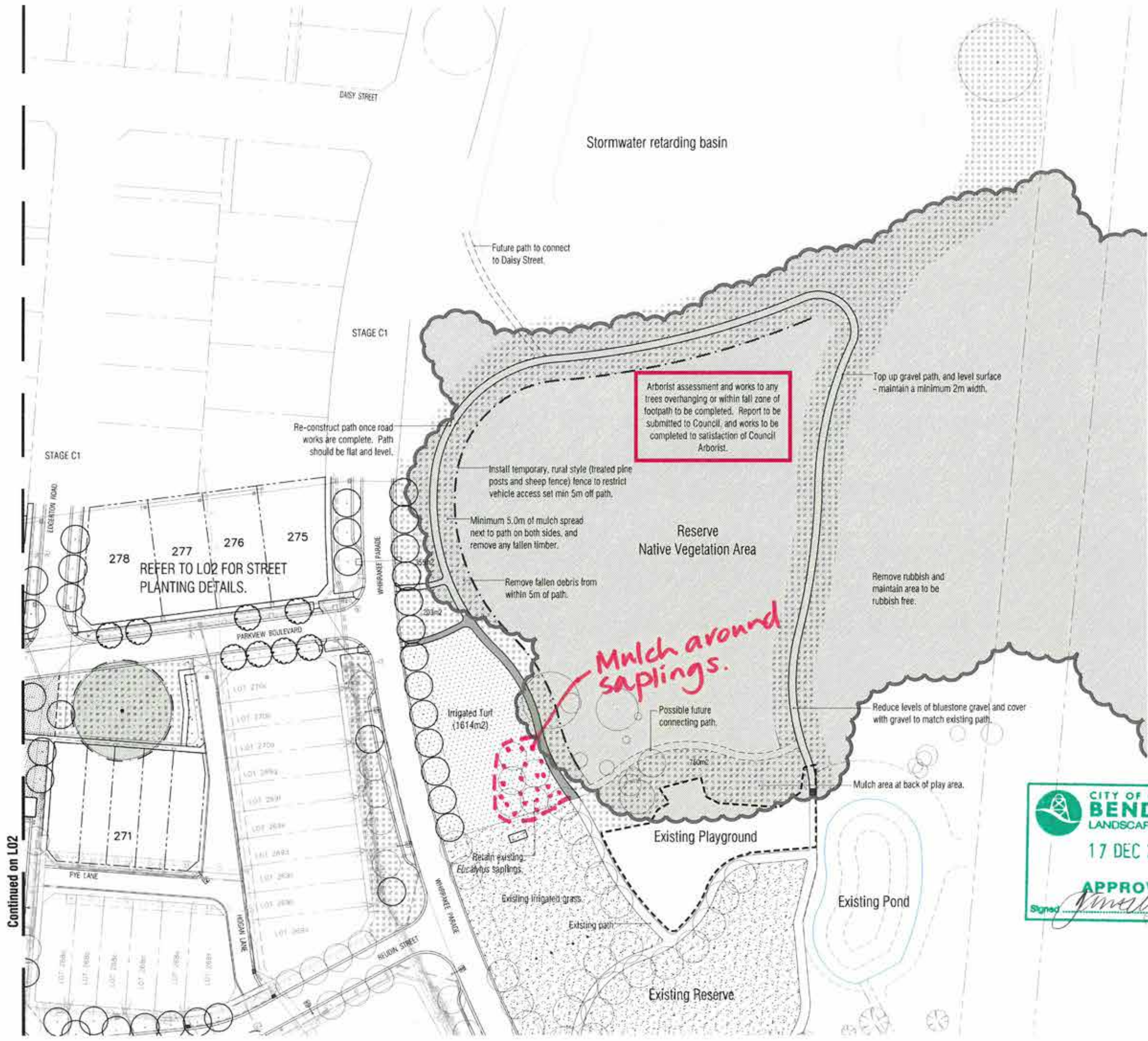
APPROVAL ISSUE

Notes

- All dimensions to be checked on site before commencing work. All measurements are in metres, unless otherwise shown.
- The locations of underground services and light poles are indicative only - refer to electrical plans for electrical and service offsets.
- The location and depth of services shall be verified on site prior to the commencement of works. The Contractor shall be liable for any damage to services during the landscape works.
- Standard Street Tree Offsets.
 - It is assumed that all Underground Cable in close proximity to the tree zone (5m diameter x 600mm depth) shall be within conduits or have cover slabs to provide a higher level of infrastructure protection. (Refer 12.0 Distribution Construction Standard Underground Trenching GA211 by Citypower and Powercor).
 - Minimum setback of 2.0m to service assets including pits and conduit crossings.
 - Minimum setback of 2.0m to domestic service tapping points and stormwater outlets.
 - Minimum setback of 1.0m to footpath crossings and 3.0m to driveways where they are existing or known.
 - Minimum setback of 3.0m to fire hydrants.
 - Minimum setback of 5.0m to light poles.
- Proposed Street Trees.
 - Where possible, trees are planted to allow a driveway within 7.0m from the Title Boundary.
 - Tree position in front of lots may change slightly due to 'actual' location of services, and constructed driveway crossings.
 - Setback from intersections (kerb) shall be a minimum of 10m.
- Existing Trees. The Contractor shall confirm and protect any existing vegetation during landscape works. Mulch under trees shall be 50mm Eukie Mulch or similar approved.
- Planting. All trees, shrubs and groundcovers shall be planted in accordance with typical details, unless otherwise specified.
- Mulch. Street Tree mulch shall be recycled hardwood (or similar approved). "Bush mulch" shall be used in reserves unless otherwise approved.
- Grass Seeding. Reseed nature strips and other grassed areas where there has been disturbance due to landscape works with a proprietary "harvy" seed mix or as otherwise approved.
- Turf. Turf shall be as specified by City of Greater Bendigo.
- Plant Schedule. Refer to sheet L01 for Plant Schedule.

Legend

- Existing extent of tree canopy and individual trees to be retained
- Trees planted as part of another stage
- Proposed Street Trees
- Timber (Bush) Mulch
- Grass (seeded)
- Turf
- Concrete Path
- Indigenous groundcover and / or shrub planting



Arborist assessment and works to any trees overhanging or within fall zone of footpath to be completed. Report to be submitted to Council, and works to be completed to satisfaction of Council Arborist.

Mulch around saplings.

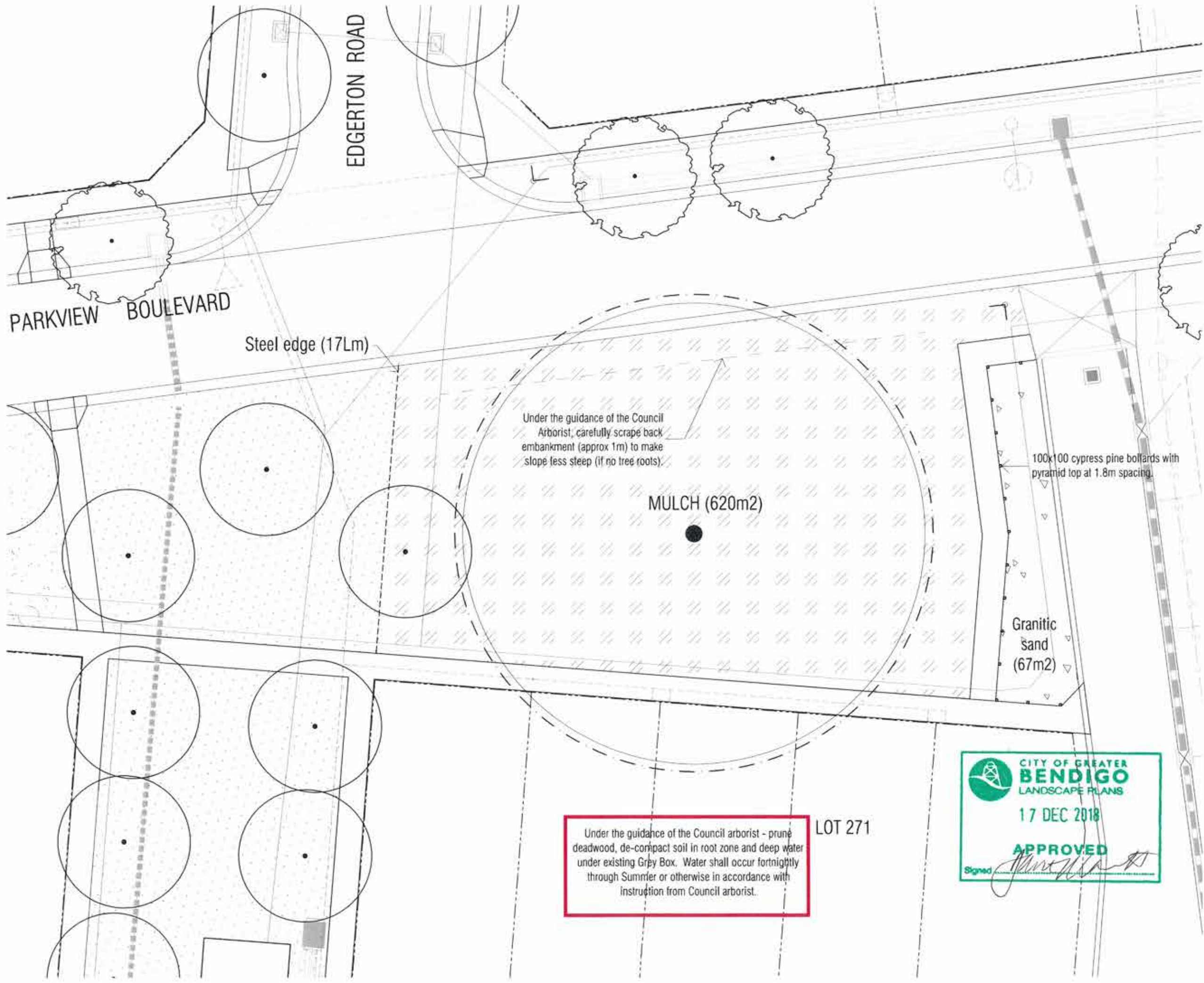


Integra
Viewpoint - Stage C5
Huntly, Bendigo

Reserve Area Landscape Plan

Approved:	AD	29.11.2018	Scale:	1:500	1:1000	3 of 4
-----------	----	------------	--------	-------	--------	--------

Project Number: **PLA069-L03** **TP2**



TP2	Town Planning Approval	Rev	29.11.18
TP1	Town Planning Approval	AD	09.02.16
P1	Preliminary Issue	AD	07.12.15
Revision	Description	Issue	Date

APPROVAL ISSUE

- Notes**
- All dimensions to be checked on site before commencing work. All measurements are in metres, unless otherwise shown.
 - The location of underground services and light poles are indicative only - refer to electrical plans for electrical and service offsets.
 - The location and depth of services shall be verified on site prior to the commencement of works. The Contractor shall be liable for any damage to services during the landscape works.
 - Existing Trees.** The Contractor shall confirm and protect any existing vegetation during landscape works. Mulch under trees shall be 50mm Eukie Mulch or similar approved.
 - Planting.** All shrubs and groundcovers shall be planted in accordance with typical details, unless otherwise specified.
 - Mulch.** Street Tree mulch shall be recycled hardwood (or similar approved). "Bush mulch" shall be used in reserves unless otherwise approved.
 - Grass Seeding.** Re-seed nature strips and other grassed areas where there has been disturbance due to landscape works with a proprietary "hardy" seed mix or as otherwise approved.
 - Turf shall be as specified by City of Greater Bendigo.
 - Plant Schedule. Refer to sheet L01 for Plant Schedule.

- Legend**
- Existing Tree to be retained with Tree Protection Zone (TPZ)
 - Proposed Street Trees
 - Plant | Label and Code
 - Timber Mulch
 - Grass (seeded)
 - Turf
 - Granitic Sand
 - Steel Edge

Under the guidance of the Council arborist - prune deadwood, de-compact soil in root zone and deep water under existing Grey Box. Water shall occur fortnightly through Summer or otherwise in accordance with instruction from Council arborist.

LOT 271



Client: *[Redacted]*

Integra
Viewpoint - Stage C5
Huntly, Bendigo

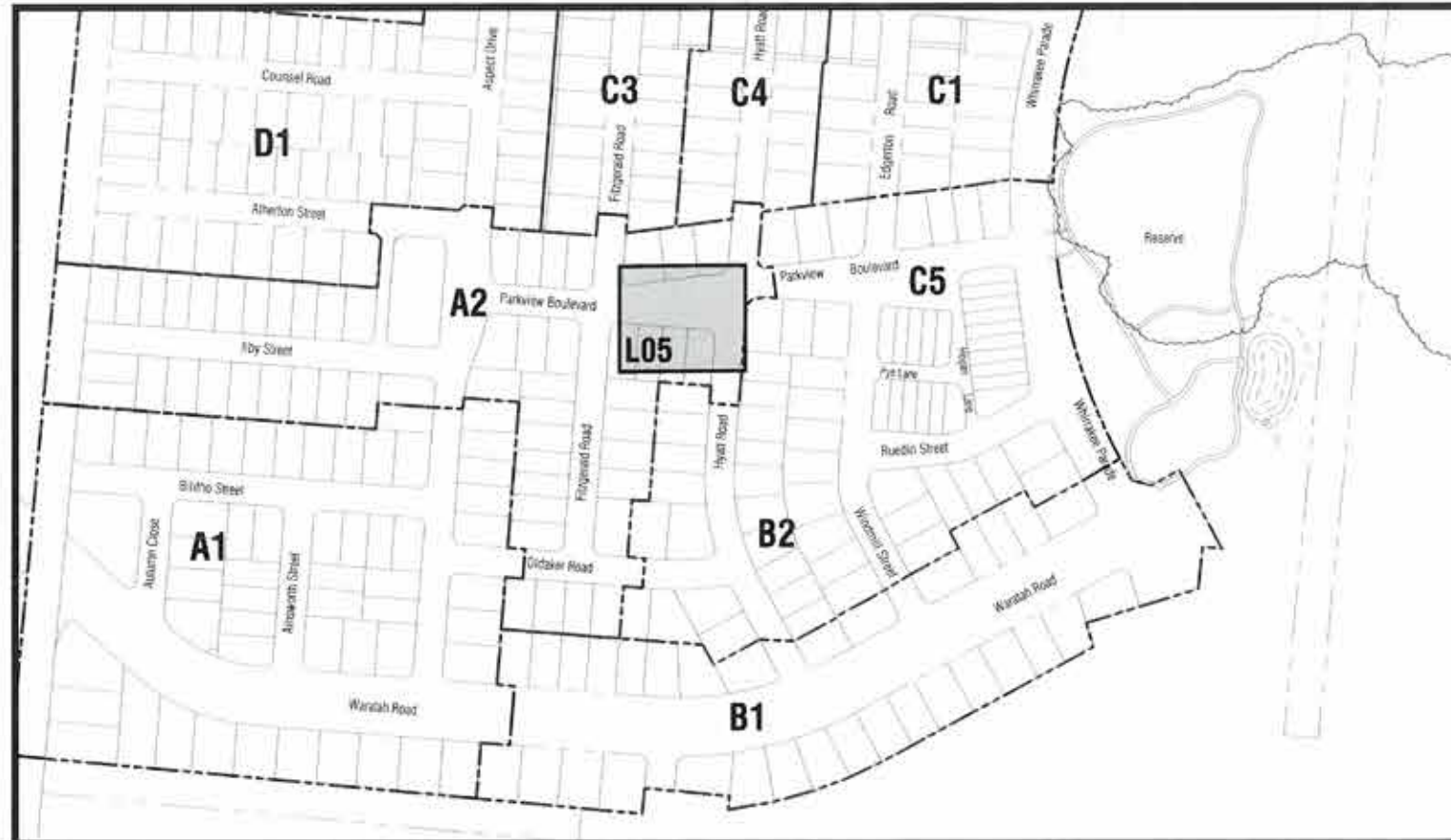
Drawing Title: **Existing Tree Area Enlargement**

Approval	DATE	Sheet
AD	29.11.2018	1 of 4
Scale (A1)	Scale (A2)	Scale
1:100	1:200	4 of 4

This drawing and design is protected by copyright © PLOT Landscape Architects Pty Ltd.

Drawing Number: **PLA069-L04** **TP2**

ViewPoint - Context Plan



TP1 Town Planning Issue	RH 11.12.18
P1 Preliminary Issue	AD 11.12.18
Issue Description	Issue Date

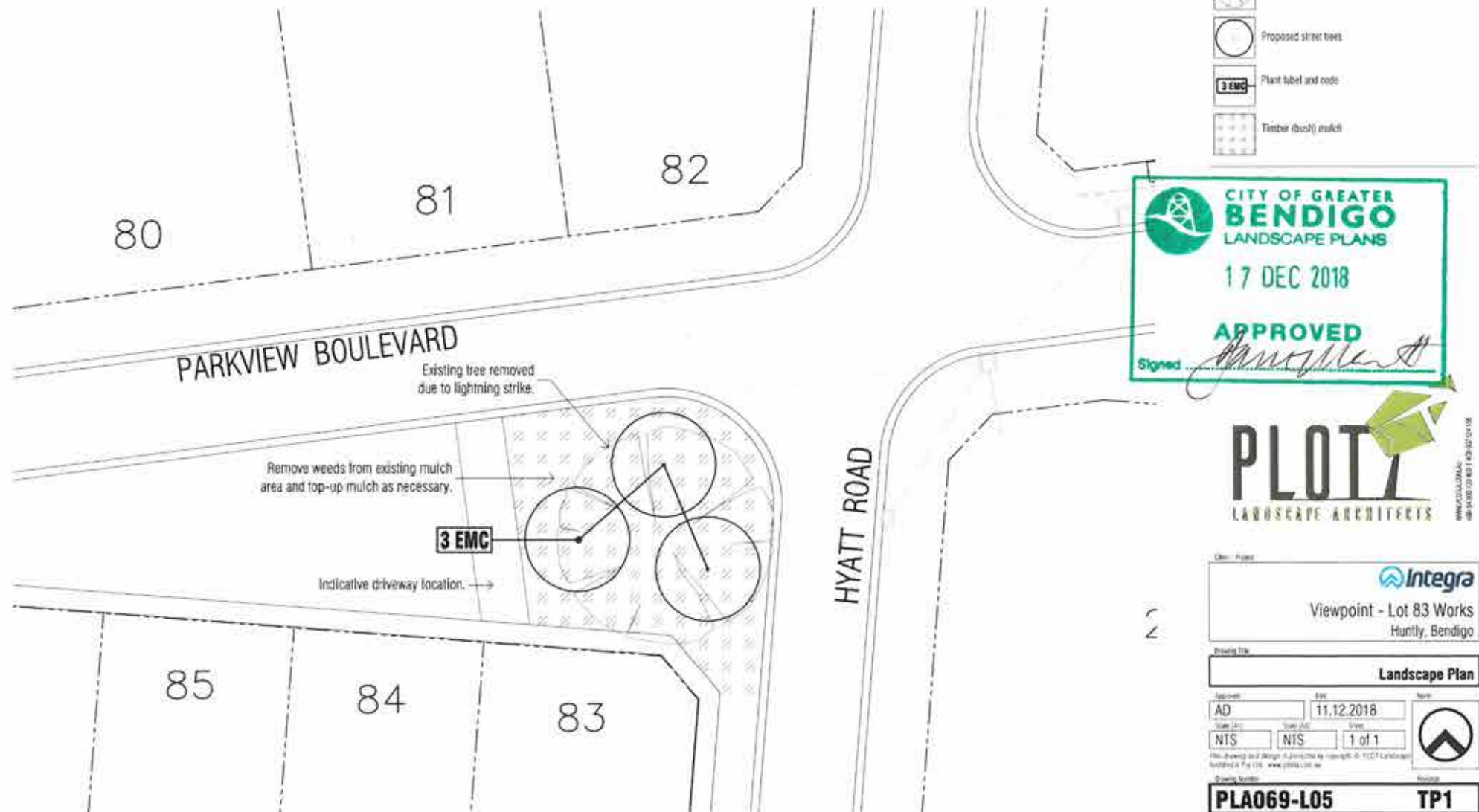
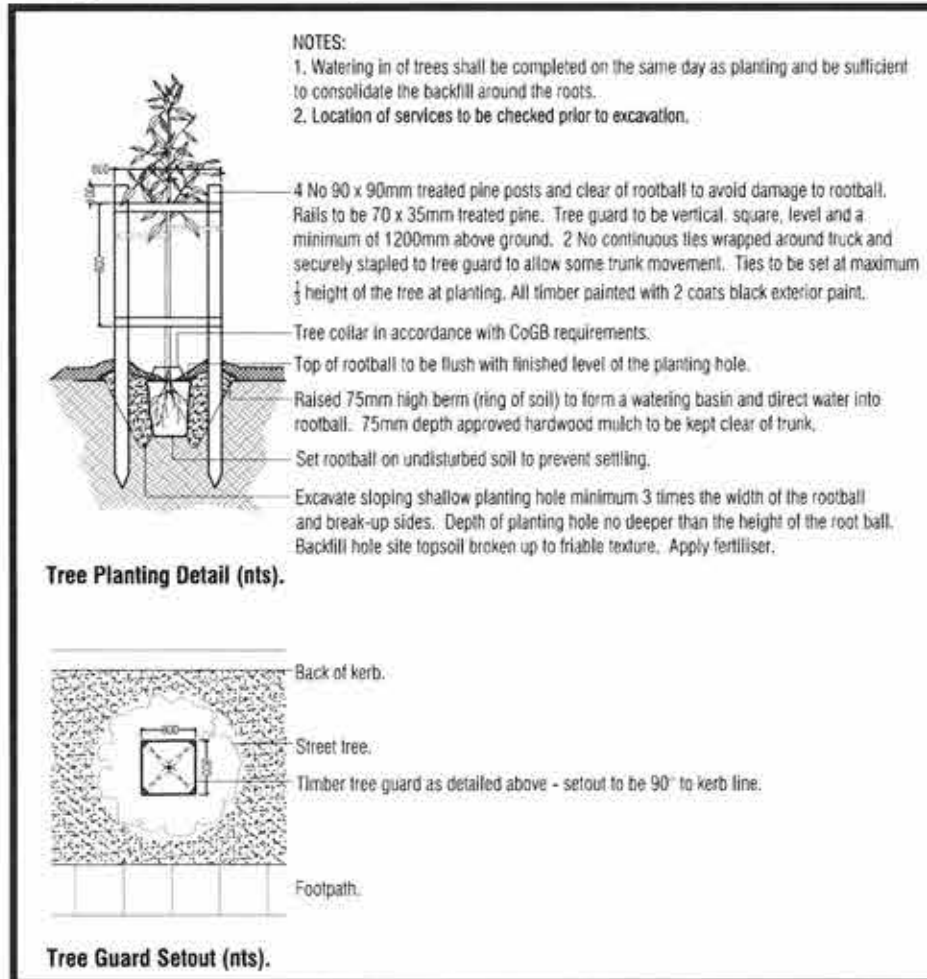
APPROVAL ISSUE

- Notes**
- All dimensions to be checked on site before commencing work. All measurements are in metres, unless otherwise shown.
 - The locations of underground services and light poles not shown. Trees shall be located to comply with offsets noted below (including underground power joints) and in accordance with current service authority requirements.
 - The location and depth of services shall be verified on site prior to the commencement of works. The Contractor shall be liable for any damage to services during the landscape works.
 - Standard Street Tree Offsets.
 - It is assumed that all Underground Cable in close proximity to the 'tree zone' (5m diameter x 600mm depth) shall be within conduits or have cover slabs to provide a higher level of infrastructure protection. ("Refer 12.0 Distribution Construction Standard Underground Trenching G421" by Citypower and Powercor).
 - Minimum setback of 2.0m to service assets including pits and conduit crossings.
 - Minimum setback of 2.0m to domestic service tapping points and stormwater outlets.
 - Minimum setback of 1.0m to footpath crossings and 3.0m to driveways where they are existing or known.
 - Minimum setback of 3.0m to fire hydrants.
 - Minimum setback of 5.0m to light poles.
 - Existing Trees. The Contractor shall confirm and protect any existing vegetation during landscape works. Mulch under trees shall be 50mm Eukie Mulch or similar approved.
 - Planting. All trees, shrubs and groundcovers shall be planted in accordance with typical details, unless otherwise specified.
 - Mulch. Street Tree mulch shall be recycled hardwood (or similar approved). "Bush mulch" shall be used in reserves unless otherwise approved.
 - Grass Seeding. Reseed nature strips and other grassed areas where there has been disturbance due to landscape works with a proprietary "hardy" seed mix or as otherwise approved.

Plant Schedule.

Street Trees				
Code	Botanical Name	Common Name	Planting Size	Quantity
EMC	<i>Eucalyptus microcarpa</i>	Grey Box	16 ltr container	3

Typical Tree Planting Detail



- Legend**
- Existing Tree removed due to lightning strike
 - Proposed street trees
 - Plant label and code
 - Timber (bush) mulch

CITY OF GREATER BENDIGO LANDSCAPE PLANS

17 DEC 2018

APPROVED

Signed: *[Signature]*

PLOT LANDSCAPE ARCHITECTS

10/100 COLLEGE STREET, BENDIGO VIC 3480

Client: **Viewpoint - Lot 83 Works**
Huntly, Bendigo

Project Title: **Landscape Plan**

Approved: **Integra**

AD 11.12.2018

Scale: 1:100

NTS 1 of 1

PLA069-L05 TP1