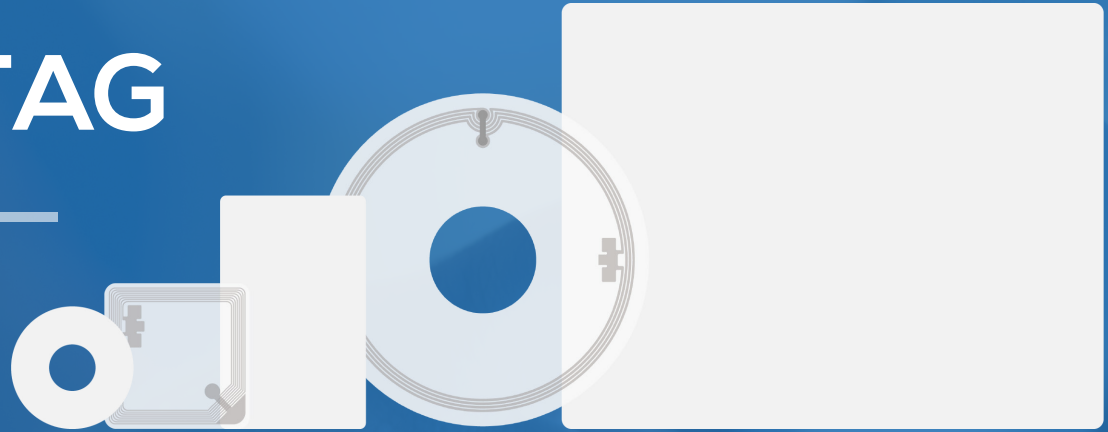


rfidTAG



The first step to converting your library collection to RFID is choosing tags that deliver fast, reliable performance. Your tags are the key to faster transactions, simpler shelf management, and improved item security using RFID capabilities.

Tech Logic has worked with hundreds of libraries to complete RFID conversions. Our rfidTAG designs exceed industry standards with high quality materials available in formats for all types of library materials. Guaranteed for the entire life-cycle of the item it is affixed to, rfidTAG has set the benchmark for RFID tag quality and performance in the library industry.



LIBRARY STANDARD

13.56 MHz frequency labels are fully aligned with ISO/IEC 15693, 18000-3, and 28560 – the standard for RFID tags used by all types of libraries.



MULTIPLE FORMATS

rfidTAG Solutions are available for printed materials, AV cases and individual discs, illustrated materials, tablets, and more.



CUSTOMIZED TAGS

rfidTAGs can be customized with library logos for ownership marking, barcode “buddy labels”, pre-encoding of data on tags, and more.



rfidTAG Booklite (Book Tag)

RFID Inlay

Size (final cut-out)	50 x 50 mm
Thickness (over IC)	~ 280 µm
Thickness (over antenna)	~ 160 µm

RFID Chip

IC Code	NXP ICODE SLIX2 SL2S2602
RF Protocol	ISO/IEC 15693
Thickness	~ 120 µm
EEPROM Memory Size	2560 bits
User Memory Size	2528 bits

Antenna Substrate (HF 13.56 MHz Identiv Smart Inlays)

Antenna Size	47x47 mm
Material	Aluminum etched on PET Substrate **optional clear PET substrate
Cross-over Connection	Crimping process

Reliability

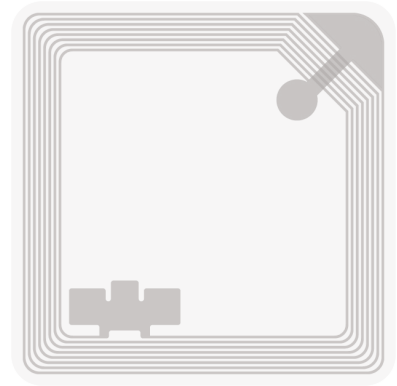
Operating Temperatures	-20° ~ 70°C (-4° ~ 158°F), at <60%RH (according to and limited by chip specification)
Thermal Cycle Test	100 cycles under -55°/85°C (-67°/185°F) 15min dwell
Thermal Humidity Test	168 hours under 85°C (185°F)/85% RH

Product Options

Clear PET
Printed Artwork (library logos for ownership marking)
Barcode (single or dual, for "buddy labels")
Chip encoding with static or dynamic information

Reel Delivery Format

Flange Size	OD 230mm: ID 76mm
Unwinding Orientation:	Chip trailing
Quantity/Reel (functional units)	2,000 Units



Tag shown at actual size

