

## Become a YMNA Member Today!

Becoming a Member of the York Mills Neighbours Association will have an impact on the future of your neighbourhood, while enjoying the member benefits.

### *YMNA Membership Benefits*

- Stay Informed • Grow Network • Have Your Say
- Support Your Community

Join at [www.ymna.ca/become-a-member](http://www.ymna.ca/become-a-member)

## Make new friends and Join a Volunteer Group Today!

Volunteering with us is a great way to meet residents in our neighbourhood, and become more connected to your community.

### *YMNA is looking for volunteers to assist in*

- Member Engagement • Community Safety • Event Planning
- Local Developments

Volunteer at [www.ymna.ca/volunteer](http://www.ymna.ca/volunteer)

## YMNA's mission is to support and strengthen our community

The York Mills Neighbours Association was born in October 2019 by merging two neighbouring community associations: the York Mills Gardens Community Association and the York Mills Leslie Ratepayers Association.

These two groups joined forces to better serve the residents of the York-Mills, Bayview and Leslie area.

Please visit our website for more information: [www.ymna.ca](http://www.ymna.ca)

Follow YMNA on    @yorkmillsna

## Join the YMNA and let your voice be heard!

Let's tell the developer that 2 Towers of 21 stories is not what our community wants

801 York Mills Road / 1855 Leslie Street development



## YMNA

The York Mills Neighbours Association is working hard to improve the daily living of our community members!

### **Stop over-development.**

For more information visit  
[www.ymna.ca/yorkmills-leslie](http://www.ymna.ca/yorkmills-leslie)

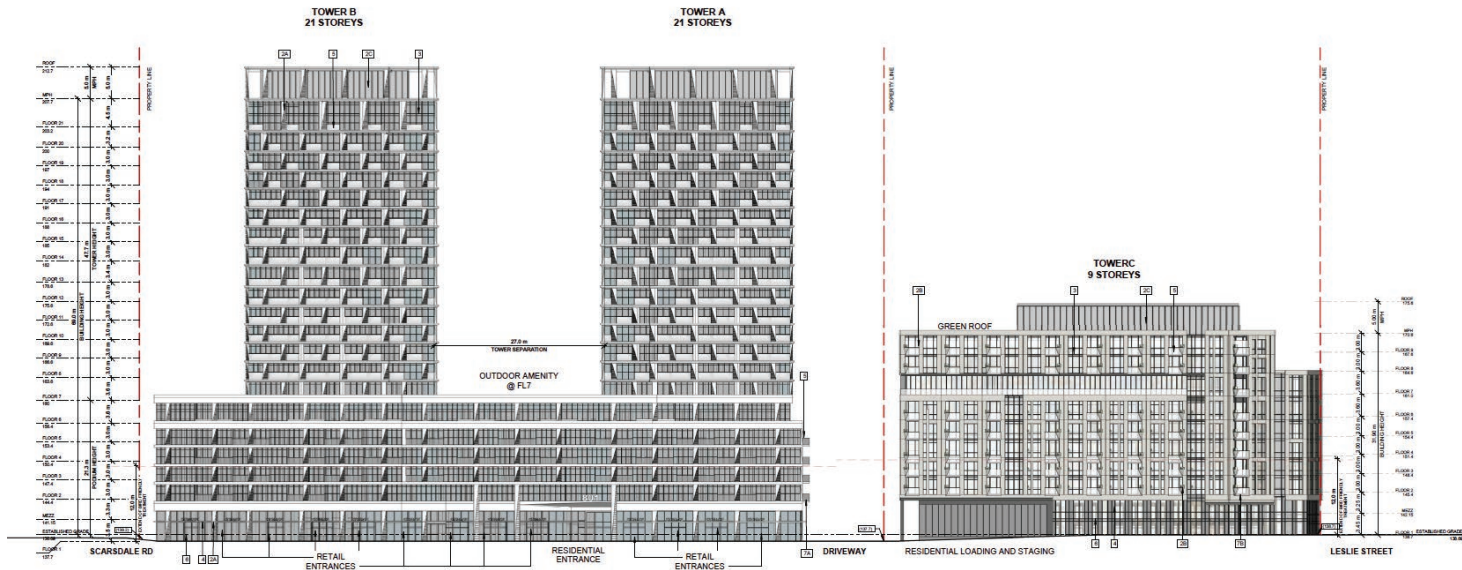
First Realty Capital has proposed a major re-development of the property on the south east quadrant of York Mills Road and Leslie Street – 801 York Mills Road / 1855 Leslie Street.



## The YMNA opposes this development because:

- 2 Towers – 21 stories each connected with a 7-storey Podium along York Mills Rd where the Winfield's and Swiss Chalet buildings are.
- 1 mid-rise building of 9 stories on Leslie St where Brown's Vet was located.
- Retail businesses in the 7 storey podium of the 'Towers' building.
- A group of townhouses located at the east end of the property, fronting on Scarsdale.
- Extremely high density – 636 units.
- Excessive building height two 21 storey Towers, rising up 74 meters in contravention of By-laws.
- Lack of space in local elementary schools to accommodate residents' children.
- A large volume of incremental traffic affecting York Mills, Leslie and the local streets.
- This will dramatically impact the quality and value of our neighbourhood.

*We need your support to fight against over-development in our neighbourhood.*



*Dear Neighbours,*

*We believe that it is critical for our neighbourhood to have a strong community body to fight over-development in our area.*

*Together, we can protect the character of our neighbourhood, and ensure a safe community!*

*This new development borders the areas of YMNA and DMRI (Don Mills Residents Association Inc.) which will have a negative impact on both our communities.*

*Become a YMNA member today!*

*Help us fight over-development!*  
[www.ymna.ca](http://www.ymna.ca)

Sincerely,

Alex Greco, President  
[info@ymna.ca](mailto:info@ymna.ca)

York Mills Neighbours Association