

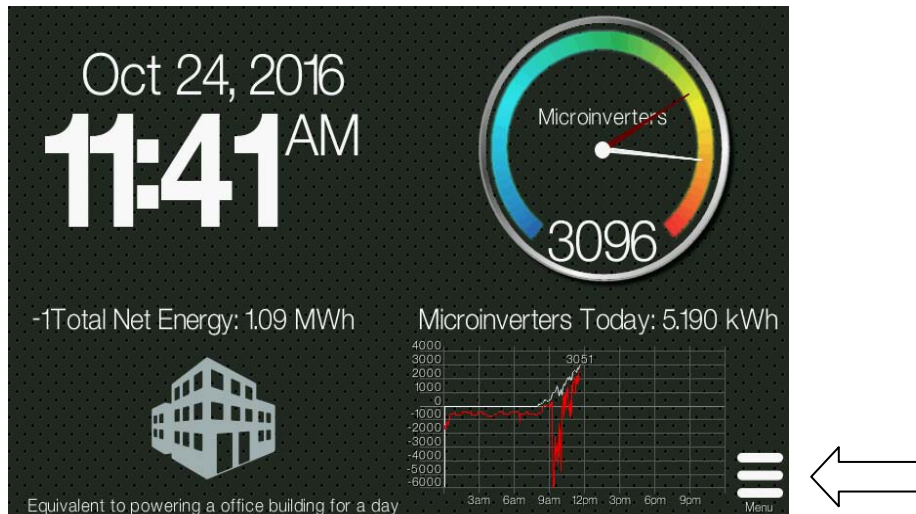
TECHNICAL BULLETIN

Coupling with Generac® Backup Generators
 Date: 12/20/2019

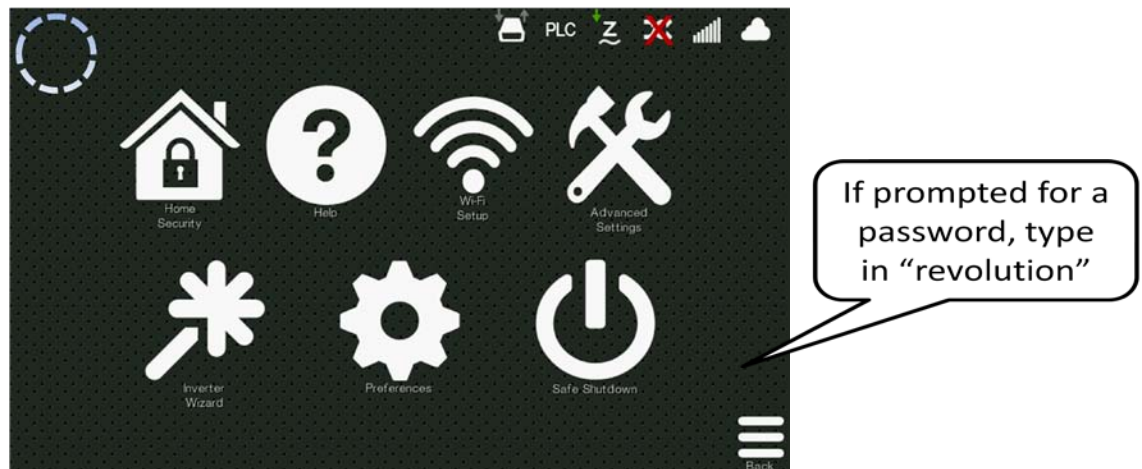


In order to support continued production during power outages or in off-grid systems, a number of installers will incorporate a backup generator with the PV system. Chilicon Power’s CP-100 gateway allows for easy integration of these two production sources with minimal programming. This technical bulletin describes connection to the most common brand, Generac®. The overall system architecture is shown at the end of this document with the gateway programming process detailed as follows:

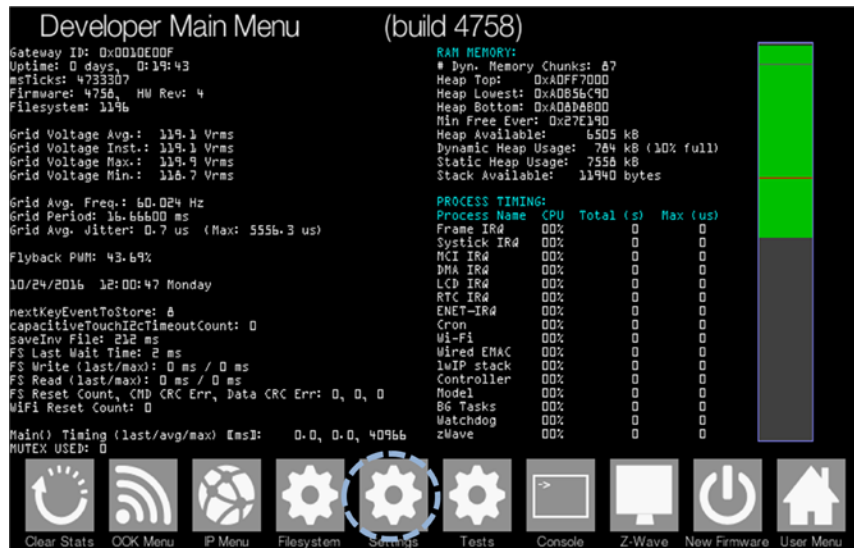
- 1) On the initial display page, select the menu option in the lower corner.



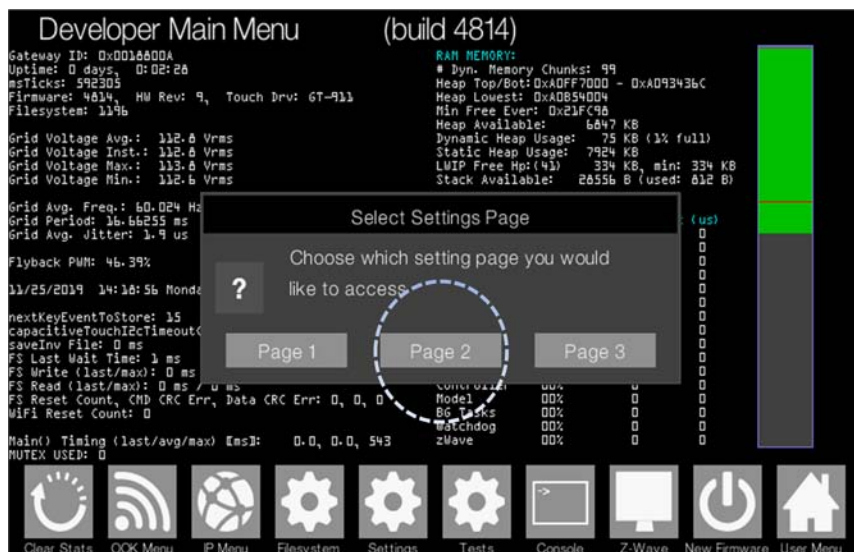
- 2) Next, touch the upper left corner of the screen. Located there is a “hidden” button which activates the “Developer Main Menu” screen.



3) On this screen select the settings button (fifth button from the left).

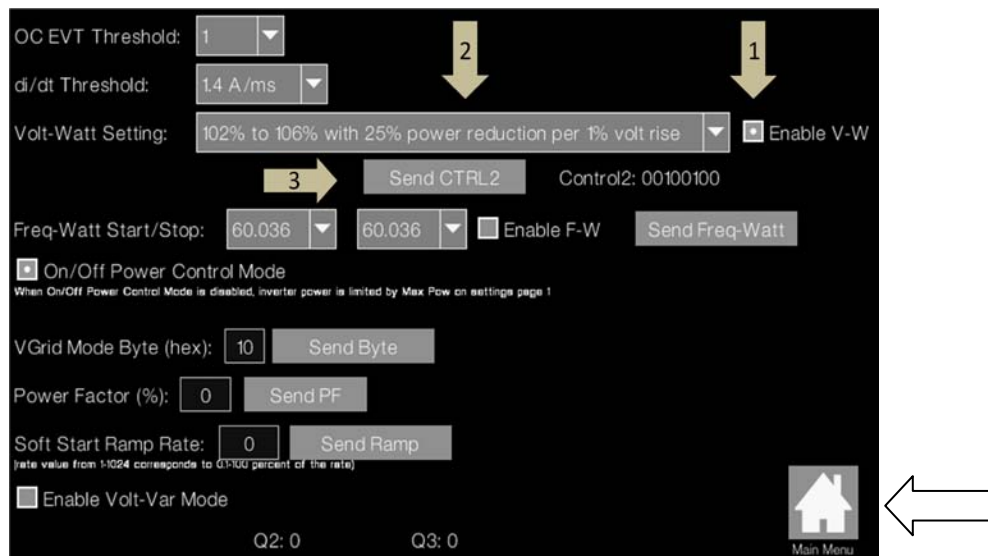


4) Select the option for Page 2.



5) Select the “Enable V-W” button on the right side of the screen (1). Then select the ramp rate option appropriate for your system and the local grid conditions (2). For a 240V system, the first selection will begin PV production shutdown at a voltage of 244.8V and complete the operation by 254.8V, while the last delays the start until 254.4V and completes shutdown at 264V. Other selections allow for intermediate values for this process.

Next, select the “Send CTRL2” button (3). The gateway will then load this change to each of the bound microinverters.



6) Select the “Home” icon to return to the main screen.

For additional information on AC coupling please refer to the Chilicon Power white paper, “*On and Off Grid Interactive Features AC Coupling*” or contact a Chilicon Power representative.

www.chiliconpower.com/images/pdf/Chilicon Power AC Coupling White Paper Ver 1.1.pdf

