



ROSWELL SHUTTLE

LODGE	ROSWELL PARK	
DEPART	ARRIVE	DEPART
7:00am	7:10am	7:10am
8:00am	8:10am	8:10am
9:00am	9:10am	9:10am
10:00am	10:10am	10:10am
11:00am	11:10am	11:10am
NO SHUTTLE — 12pm-4pm		
4:00pm	4:10pm	4:10pm
5:00pm	5:10pm	5:10pm
6:00pm	6:10pm	6:10pm
7:30pm	7:40pm	7:40pm
8:00pm	8:10pm	8:10pm
9:00pm	9:10pm	9:10pm

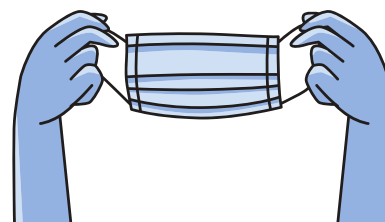
Effective 8/17/20
(Subject to change with notice)

Monday - Friday

CV Pick Up Location:
In front of CV Lodge

**Roswell Park
Pick Up Location:**
Loop in front of main
hospital entrance

**FACE COVERINGS MUST
BE WORN AT ALL TIMES
WHILE ON THE SHUTTLE**



Please Remember:

- Shuttle departure and pick up times are based on ideal conditions. Actual departure and pick up times **may vary based on weather conditions, traffic, or other factors that are beyond the control** of the shuttle driver.
- To remain on schedule, the CV Shuttle **cannot back-track** to pick up residents who have missed the shuttle.
- **Only CV residents may use the shuttle.**
- Residents **MUST show their CV white key card** to the shuttle driver in order to utilize the shuttle. Shuttle drivers reserve the right to deny entrance onto the CV shuttle if a white key card is not presented.