

NOTE:  
T/O WINDOWS @ 96" AFF.

WINDOW STYLES	
STANDARD OPTION	SELECTION
PRODUCT LINE	1200-01 VINYL/CLAD WINDOWS
EXTERIOR COLOR	BRONZE
INTERIOR COLOR	WHITE
EXTERIOR CASING	5/8" METAL W/ FIN
DRIP CAP	DRIP CAP
EXTENSION JAMBS	NONE
JAMB MAT	VINYL
HARDWARE COLOR	BRUSHED CHROME
SHIP SCREEN	SHIP SCREEN

**LOWER LEVEL - 608 SQ FT**  
SCALE: 3/16"=1'-0"

**LOWER LEVEL EXTERIOR DOOR SCHEDULE**

MARK	SIZE	LOCATION	TYPE
BD1	3'-6" x 8'-0"	ENTRY	
BD2	4'-0" x 8'-0"	GARAGE	
BD3	4'-0" x 8'-0"	GARAGE	
BD4	3'-0" x 6'-8"	GARAGE/ENTRY	

**LOWER LEVEL WINDOW SCHEDULE**

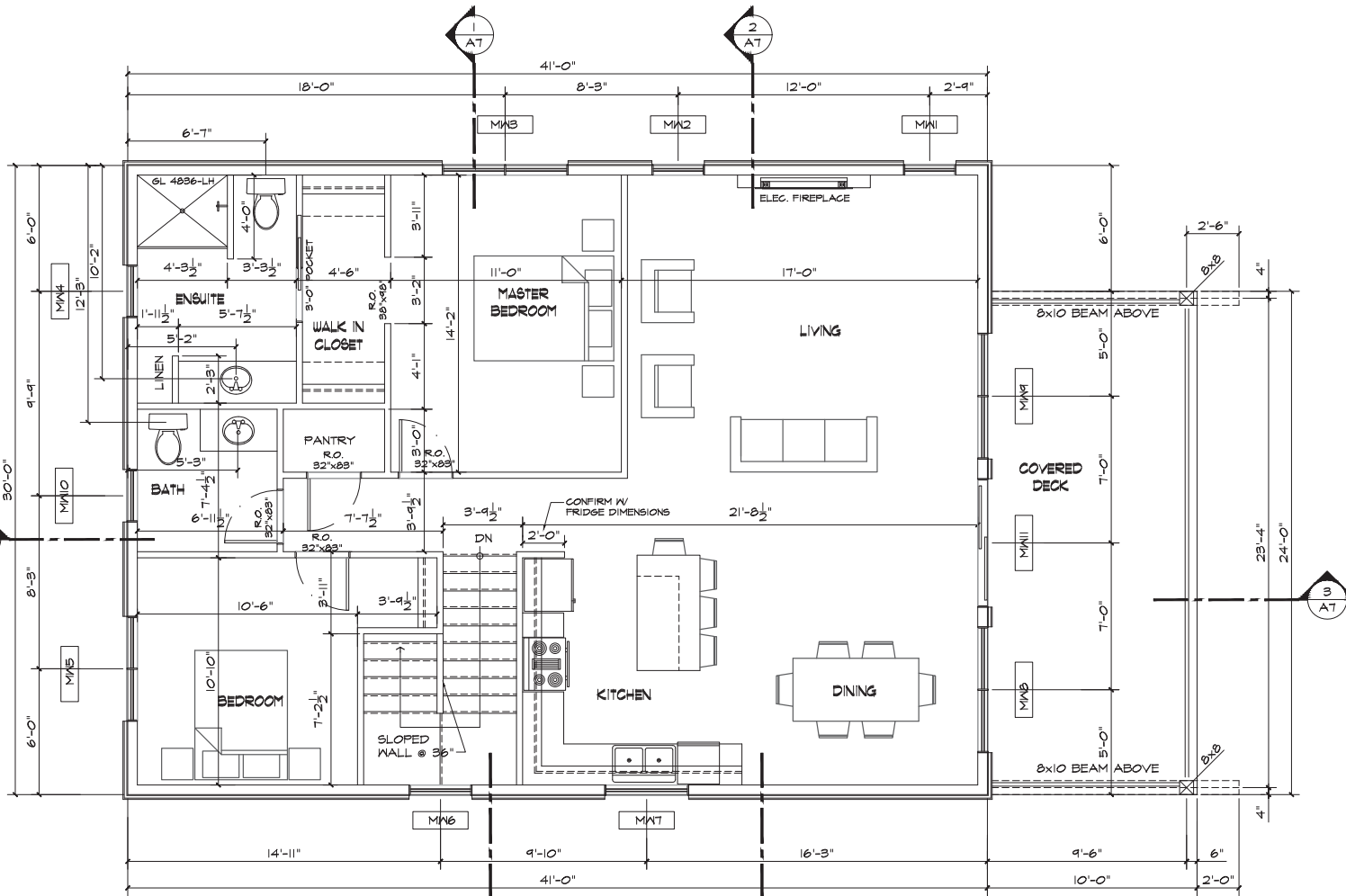
MARK	SIZE	LOCATION	TYPE
BW1	2'-6" x 5'-0"	ENTRY	CASEMENT
BW2	5'-0" x 4'-0"	BEDROOM	1/2 CASEMENT, 1/2 PICTURE
BW3	5'-0" x 4'-0"	BEDROOM	1/2 CASEMENT, 1/2 PICTURE

STAIRS:  
- 17 RIGERS @ 7 1/2"  
- 16 TREADS @ 10" + 1" NOSING

REVISIONS:

GENERAL NOTES:  
**LOWER LEVEL**

DRAWN BY BL	CHECKED BY
DATE OCT 13/18	SCALE AS NOTED



**UPPER LEVEL - 1230 SQ FT**  
SCALE: 3/16"=1'-0"

STAIRS:  
- 17 RISERS @ 7 3/4"  
- 16 TREADS @ 10" + 1" NOSING

**NOTE:**  
T/O WINDOWS IN LIVING,  
DINING & MASTER = @ 85 1/8" AFF.  
ALL OTHER T/O WINDOWS TO  
BE 84" AFF.

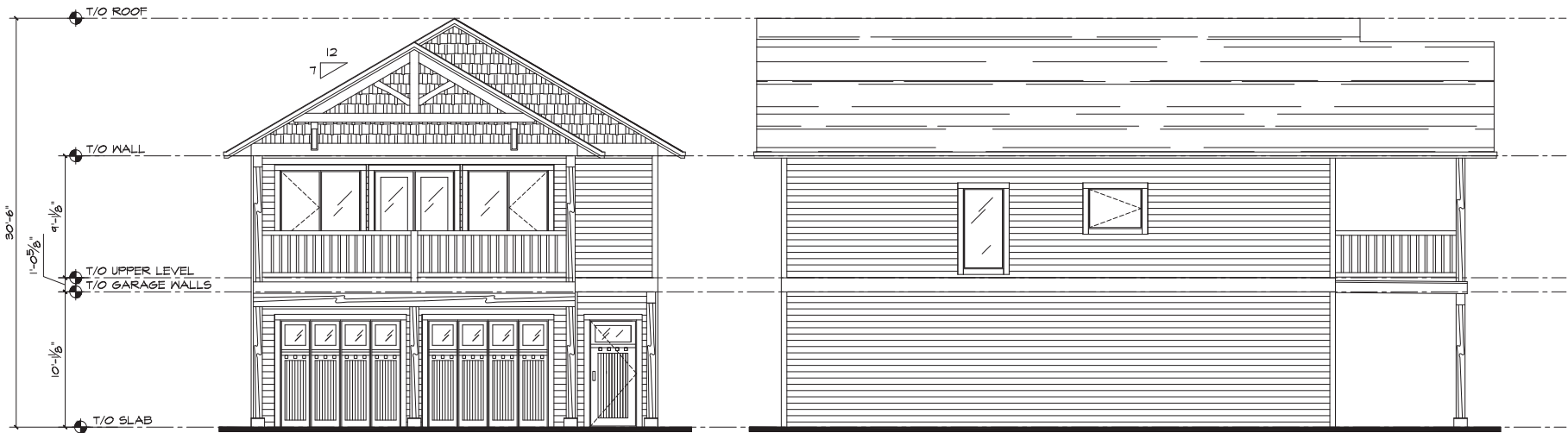
**UPPER LEVEL WINDOW SCHEDULE**

MARK	SIZE	LOCATION	TYPE
MNI	2'-6" x 6'-0"	LIVING	CASEMENT
MN2	2'-6" x 6'-0"	LIVING	CASEMENT
MN3	6'-0" x 5'-0"	MASTER	1/2 CASEMENT, 1/2 PICTURE
MN4	2'-6" x 3'-0"	ENSUITE	CASEMENT
MN5	5'-0" x 4'-0"	BEDROOM	1/2 CASEMENT, 1/2 PICTURE
MN6	3'-0" x 6'-0"	STAIRS	PICTURE
MN7	4'-0" x 3'-0"	KITCHEN	CASEMENT
MN8	6'-0" x 6'-6"	DINING	1/2 CASEMENT, 1/2 PICTURE
MN9	6'-0" x 6'-6"	LIVING	1/2 CASEMENT, 1/2 PICTURE
MN10	2'-6" x 3'-0"	HALF BATH	CASEMENT
MN11	6'-0" x 8'-0"	LIVING	PATIO SLIDER, COMPOSITE

**WINDOW STYLES**

STANDARD OPTION	SELECTION
PRODUCT LINE	200-01 VINYL/GLAD WINDOWS
EXTERIOR COLOR	BRONZE
INTERIOR COLOR	WHITE
EXTERIOR CASING	5/8" METAL W/ FIN
DRIP CAP	DRIP CAP
EXTENSION JAMBS	NONE
JAMB MAT	VINYL
HARDWARE COLOR	BRUSHED CHROME
SHIP SCREEN	SHIP SCREEN





1 FRONT ELEVATION  
A6 SCALE: 1/8" = 1'-0"

2 SIDE ELEVATION  
A6 SCALE: 1/8" = 1'-0"

LEFT SIDE OPENINGS:  
- OPENINGS: 30 SQ FT (2.8 SQ M)  
- WALL AREA: 832 SQ FT (77 SQ M)  
- % OPENINGS: 3.6 %  
- LIMITING DISTANCE (10' / 3M) HALVED: 1.5M  
- ALLOWABLE %: 8 %



3 BACK ELEVATION  
A6 SCALE: 1/8" = 1'-0"

4 SIDE ELEVATION  
A6 SCALE: 1/8" = 1'-0"

RIGHT SIDE OPENINGS:  
- OPENINGS: 61.5 SQ FT (5.7 SQ M)  
- WALL AREA: 832 SQ FT (77 SQ M)  
- % OPENINGS: 7.4 %  
- LIMITING DISTANCE (15'-9" / 4.8M) HALVED: 2.4M  
- ALLOWABLE %: 12.04 %