

# DUBLIN CANVAS



## SUMMER 2021 CALLOUT



## Callout for Artwork Submissions - Summer/Autumn 2021

---

Dublin Canvas is an idea, a public art project intended to bring flashes of colour and creativity to everyday objects within County Dublin. Less grey, more play!

The project takes previously unused public space and transforms it into canvases to help brighten up each area. Making Dublin a more beautiful place to live, work and visit.



**'A Bird in the Hand' by Juliette O'Brien. St. Michael's Church, Marine Road, Dún Laoghaire. (2020)**

Dublin Canvas utilises traffic light control boxes. These boxes previously designed to go unnoticed will now become canvases for artwork. Leading on from the successful completion of over 530 pieces to date within County Dublin. Painted throughout the Summer/Autumn 2015 - 2020. Dublin Canvas is now seeking submissions of artwork for a further 16 boxes located across the Dún Laoghaire Rathdown County Council area.

This is a fantastic opportunity to have your artwork displayed to the public in prime locations. Completed artwork will brighten up and turn these once dull, heavily tagged boxes into beautiful works of art, transforming each area into a walking gallery of public art.

Artists and community groups who wish to participate and paint one of this Summer's available boxes are asked to carefully read the guidelines below on how to enter and then forward on their correctly prepared submissions to [info@dublincanvas.com](mailto:info@dublincanvas.com)

Visit website [www.dublincanvas.com](http://www.dublincanvas.com) to view all artist's profiles, to sign up to our mailing list and to further explore the background to Dublin Canvas.

Please forward on this brief to family, friends, and work colleagues that you believe may be interested in public art and helping Dublin Canvas to continue to "Colour in the County".

Support the artists and the platform by following #DublinCanvas @

[www.facebook.com/DublinCanvas](https://www.facebook.com/DublinCanvas)

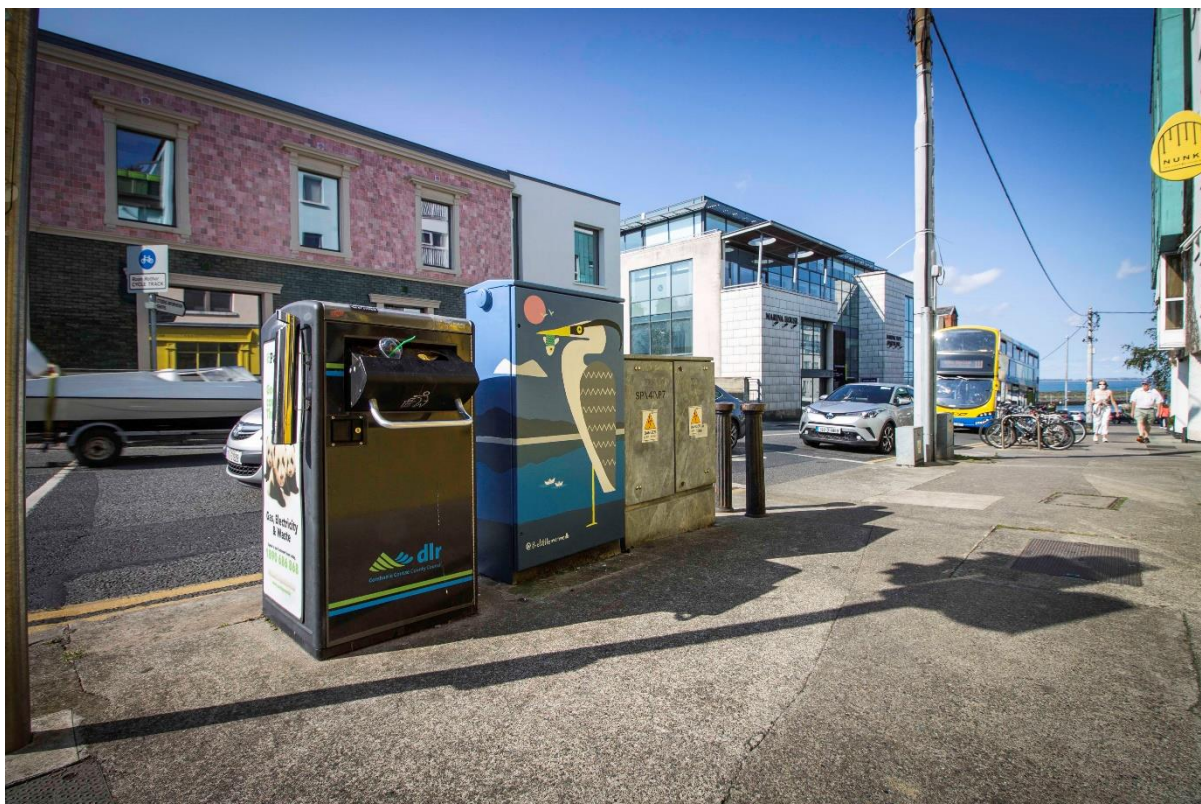
[www.twitter.com/Dublincanvas/](https://www.twitter.com/Dublincanvas/)

[www.instagram.com/dublincanvas/](https://www.instagram.com/dublincanvas/)





**'Dublin to Kingstown' by Hugh Madden. Rock Road, Blackrock Park, Dublin. (2020)**



**'Hermon the Heron' by Medb McCarthy. George's Street Lower/Clarence Street, Dún Laoghaire. (2020)**

## Selection Criteria and Guidelines

---

Dublin Canvas is an inclusive public art platform. To date, we have had a variety of artists from all age groups – college students to retirees, all walks of life - barristers to baristas, a wide variety of nationalities with a full array of art disciplines. Graphic designers, illustrators, stencil artists, fine artists, street artists and landscape artists to name but a few. The main objective of Dublin Canvas is to “Colour in the County”. Artists have complete freedom on how to achieve this.

Participants should draw upon their own creativity but will also pay attention to the different characteristics of each area for inspiration, paying close attention to the surroundings of each box when designing their artwork. As each of the box locations are quite distinct it is suggested that artists visit each location to draw inspiration from the immediate environment. Selected artwork imagery will still be owned by the participants. However, you must agree to let Dublin Canvas use artwork imagery in any way to promote the platform and Dún Laoghaire Rathdown County Council will include use on websites, social media and all related publications. It is intended that all artwork will stay for a minimum of 1 year. However, Dublin Canvas reserves the right to remove any artwork at any time without prior notice.

Artwork will be selected based on the following criteria:

- creativity and innovation of design
- relevance of the image to the chosen area
- ability to work within the guidelines of the project

Designs would be ineligible if they contain the following:

- breach of intellectual property rights (stealing someone else's idea)
- trademarks, advertisements, brand or business names, logos, or copyrighted images
- images relating to drugs/alcohol and/or offensive/contentious images
- artwork dominated by text, unless relevant to the design

Entrants should bear in mind the following points when conceptualizing designs.

- maximize the use of the 3-dimensional aspects of the boxes
- a small logo, entrant's details and box reference number will appear on the side of each unit
- the finished artwork will be in the public domain, there is a chance that it will be vandalized. Consequently, large areas of the design should not be left open to attack. For example, large areas of blue skies on an image would give vandals the opportunity to deface your artwork.
- It would be recommended that participants visit each site for inspiration and to ensure that their designs integrate with the surrounding area.
- only prior agreed artwork can be used on boxes
- prior to painting, each of the allocated units will be painted a matt white by Dublin Canvas

COVID 19 precautions:

- each location is selected with social distancing in mind. Collapsible traffic cones and signage will act as barriers between artists and the public.
- this year there will be an emphasis on allocating units as close to artists as possible.
- all supplies will be delivered and collected to artists home/business address.
- in the event of the government restrictions tightening once again – artists selected can complete their pieces next Summer/Autumn.





**'Embrace the Rain' by Johnman. Killmacud Road, Old Dublin Road, Stillorgan. (2020)**



**'Pier Building' by Paul Francis. Marine Road, Crofton Road, Dún Laoghaire. (2020)**



## Timeline

---

Callout Commences - Monday 19<sup>th</sup> April 2021

**Submission Deadline - Friday 21<sup>st</sup> May 2021**

Selection process - Monday 24<sup>th</sup> May - Friday 18<sup>th</sup> June 2021

Artwork Completed - late June – late August - artists unavailable to paint at this time should not apply

## Budget

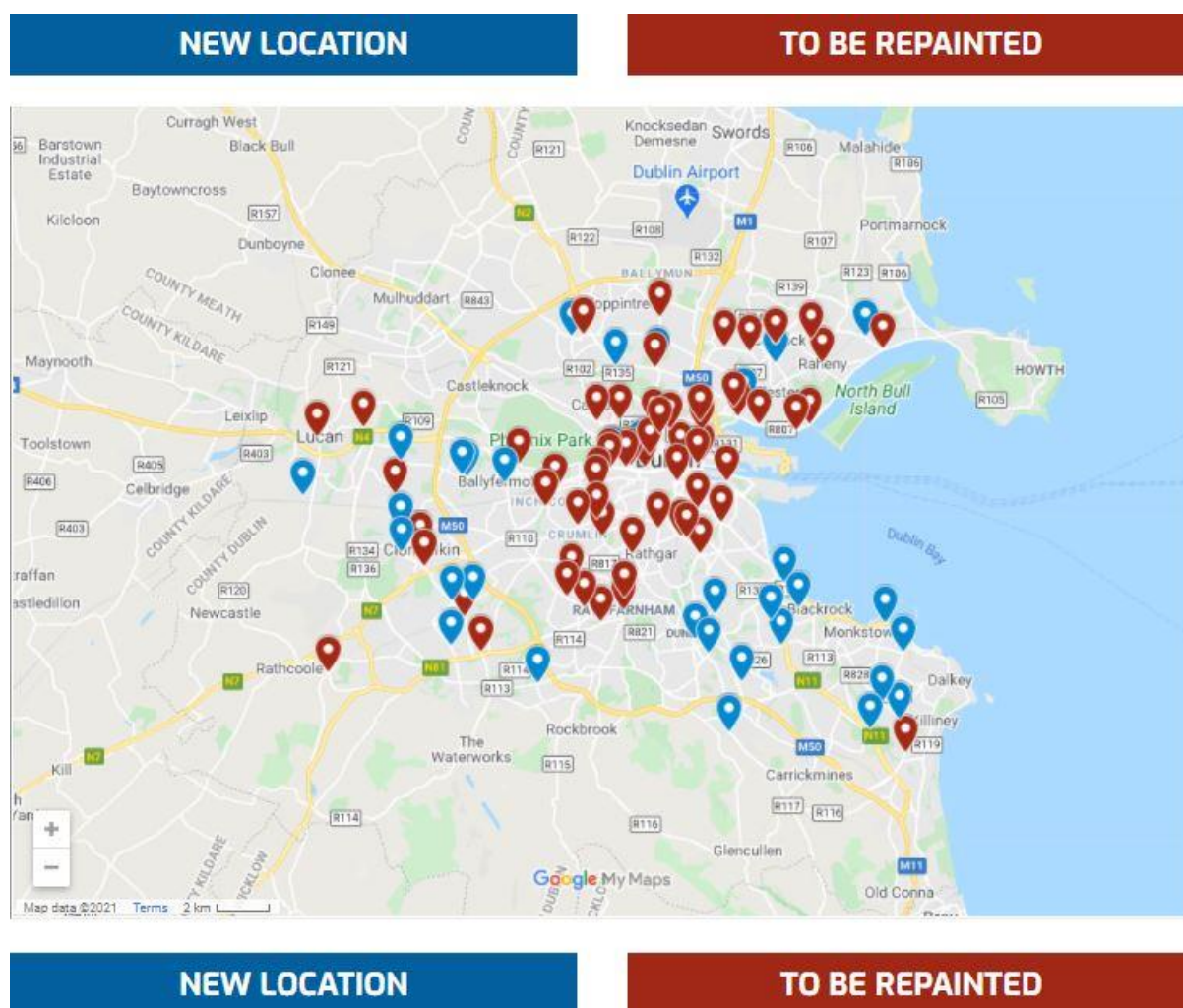
---

Dublin Canvas is asking for members of the public that are interested in the project to volunteer their time and talent to help brighten up Dublin. In saying we believe it should not cost participants anything more than time. There are two options available to help cover costs. Option one is that Dublin Canvas will supply all materials (paints, brushes, PPE etc.) in a portable pack, plus a payment of €200 to cover travel expenses/food/cafeine for the day. Or option two, a payment of €250 and participants supply their own materials. For the second option the materials used would have to be pre-approved by Dublin Canvas. This will ensure all painted boxes will remain vibrant for the duration of the project. Make sure to indicate on your submission which option you prefer.



**Portable artist pack provided. Packs contain everything artists need to complete their piece.**

## Available Locations



Functioning map available at [www.dublincanvas.com/paint](http://www.dublincanvas.com/paint)

Dublin Canvas uses traffic light control boxes to exhibit high quality, creative artwork to the public. Traffic light control boxes make perfect canvases to showcase community art as they are always naturally located in high footfall – high traffic areas. The artwork can be enjoyed by pedestrians, cyclists, and motorists as they wait for the traffic light to turn green. They also have the added benefit of being uniform in size and are all owned and maintained by each local Council. Other utility boxes are not suitable for the project. Entrants must be 18 years old or over! Each box will be awarded on quality and creativity of design. The judging panel will be made up of Council representatives. Website contains F.A.Q section, please email all enquiries not covered within to [info@dublincanvas.com](mailto:info@dublincanvas.com) Make sure to sign up to our mailing list @ [www.dublincanvas.com](http://www.dublincanvas.com)

## Submission Checklist

---

Be sure to include the following with your submission(s):

Contact details with your current location: general area or address

Artwork: label all artwork correctly, send Jpeg's or PDF's

Copy/paste/fill out below content:

**Artist:**

**Artwork Title:**

**Preferred Artwork Location/Area** [view locations @www.dublincanvas.com/paint](http://www.dublincanvas.com/paint)

**Artwork Description:** (40 words or less, if possible, not essential)

**Biography:** (40 words or less, if possible, not essential)

**Contact Artist:** Website – Instagram -Twitter - Facebook (if available, not essential)

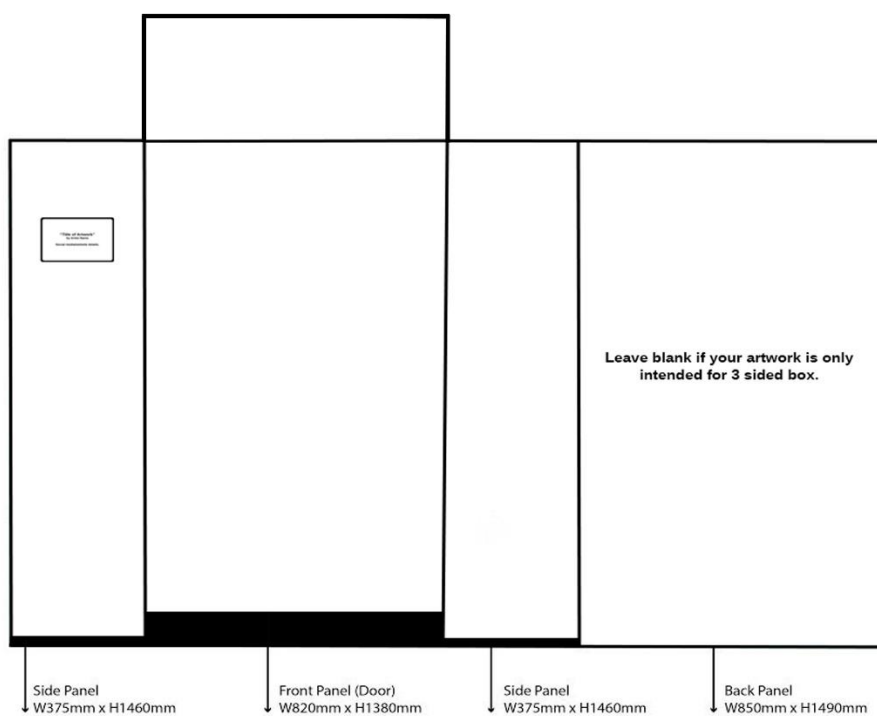
**Supply Materials:** Dublin Canvas or own (see budget paragraph above for details)

**Address:** your general area or address

Artists may submit multiple entries

Email correctly prepared submission(s) with contact details/address to:

[info@dublincanvas.com](mailto:info@dublincanvas.com)



Templates available to download @ [www.dublincanvas.com/paint](http://www.dublincanvas.com/paint)





**'The Birds' by Juliette O'Brien. Adelaide Road, Harcourt Terrace, Dublin 2 (2018)**



## Perfect Submission Layout example

---

**Artist:** Juliette O'Brien

**Artwork Title:** 'The Birds'

**Preferred Artwork Location:** Southside – Dublin City Council

**Artwork Description:** I based the design off stained glass windows and hope to bring some nature and colour into the grey streets. The style is inspired by ancient Celtic artwork and how they depicted nature and animals.

**Biography:** An artist currently studying model-making in IADT. I am also developing my skills in painting, illustration, and graphic design. I love creating colourful, thoughtful pieces and interacting with the public while I paint.

**Contact Artist:** IG: [julietteobrienart](#) FB: [julietteobrienart](#)

**Supply Materials:** Dublin Canvas

**Address:** 123 Made Up Street, Portobello, Dublin 8.

