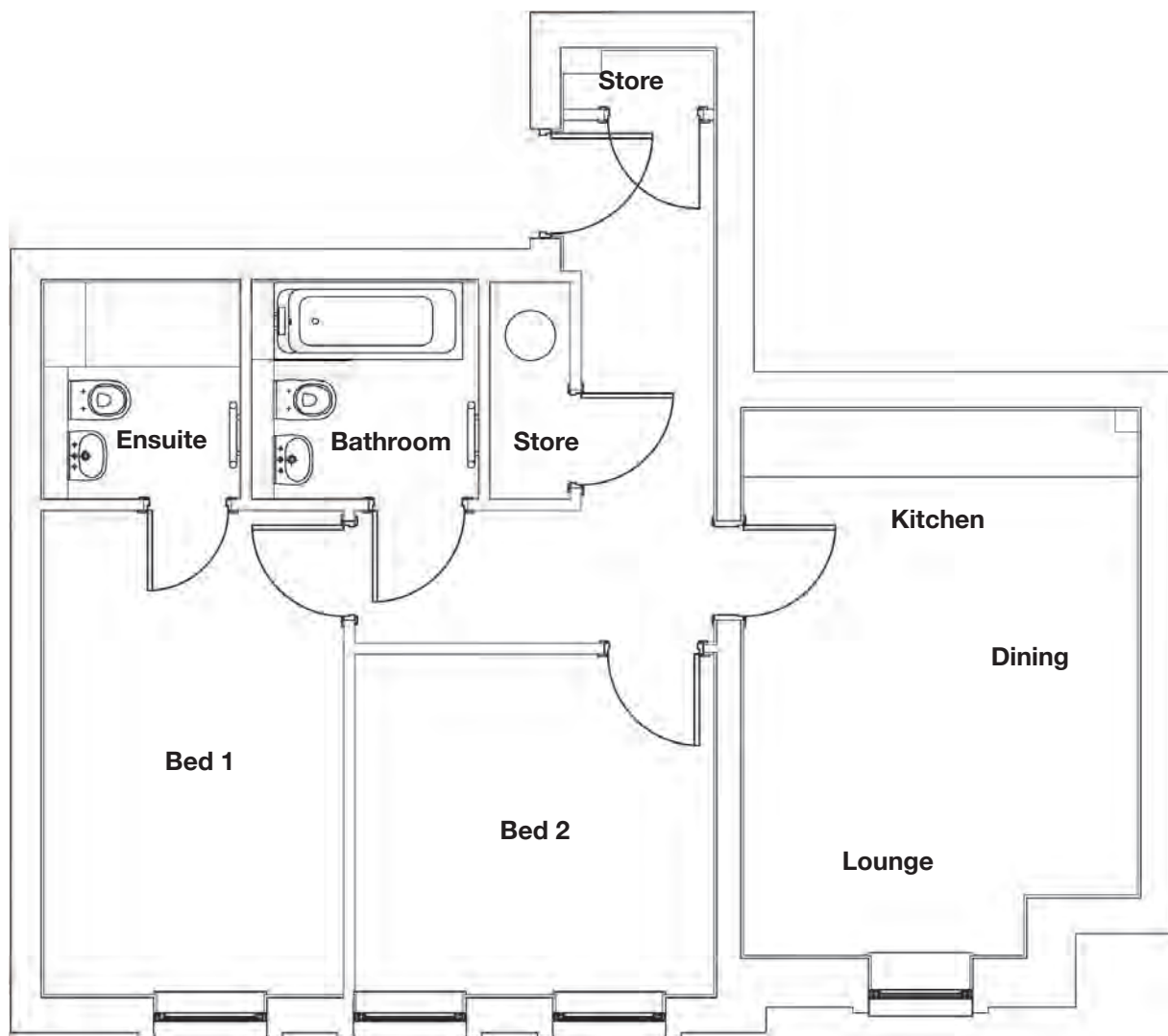




HERON POINT
NORTHENDEN

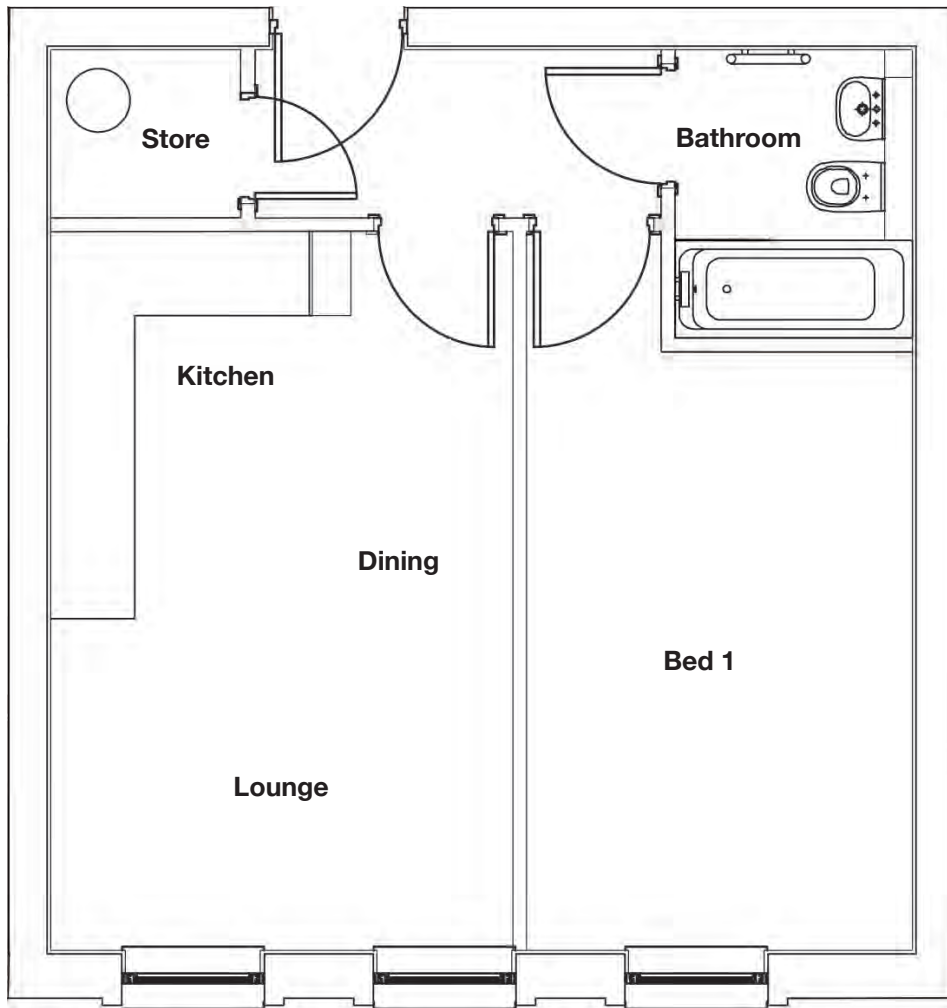


 A P A R T M E N T - 1

Kitchen/Dining/Lounge	5.18m x 3.81 17' x 12'6"
Bed 1	4.68m x 2.67m 15'4" x 8'9"
Ensuite (Bed 1)	1.96m x 1.78m 6'5" x 5'10"
Bed 2	3.38m x 3.26m 11'1" x 10'8"
Bathroom	2.05m x 1.96m 6'9" x 6'5"



HERON POINT
NORTHENDEN

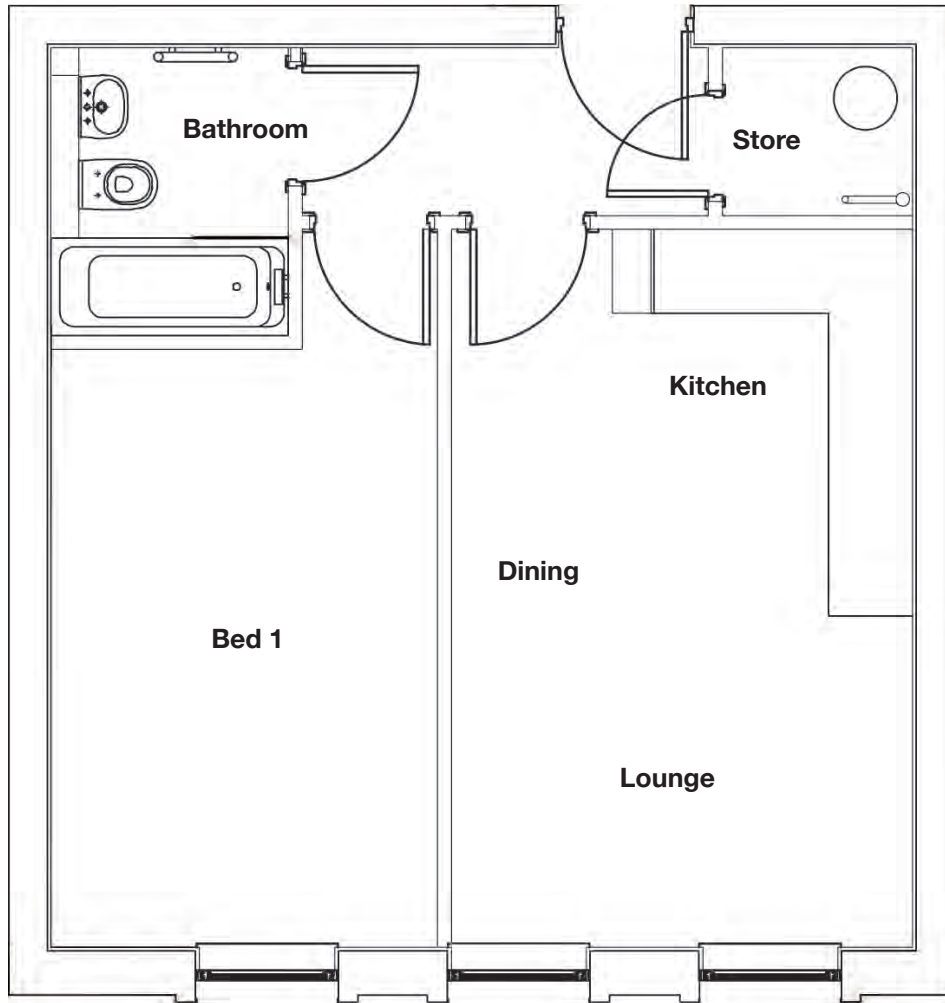


A P A R T M E N T - 2

Kitchen/Dining/Lounge	5.44m x 3.33m 17'10" x 10'11"
Bed 1	4.57m x 2.85m 15' x 9'4"
Bathroom	2.06m x 1.71m 6'9" x 5'7"



HERON POINT
NORTHENDEN



A P A R T M E N T - 3

Kitchen/Dining/Lounge	5.44m x 3.33m 17'10" x 10'11"
Bed 1	4.57m x 2.85m 15' x 9'4"
Bathroom	2.06m x 1.71m 6'9" x 5'7"

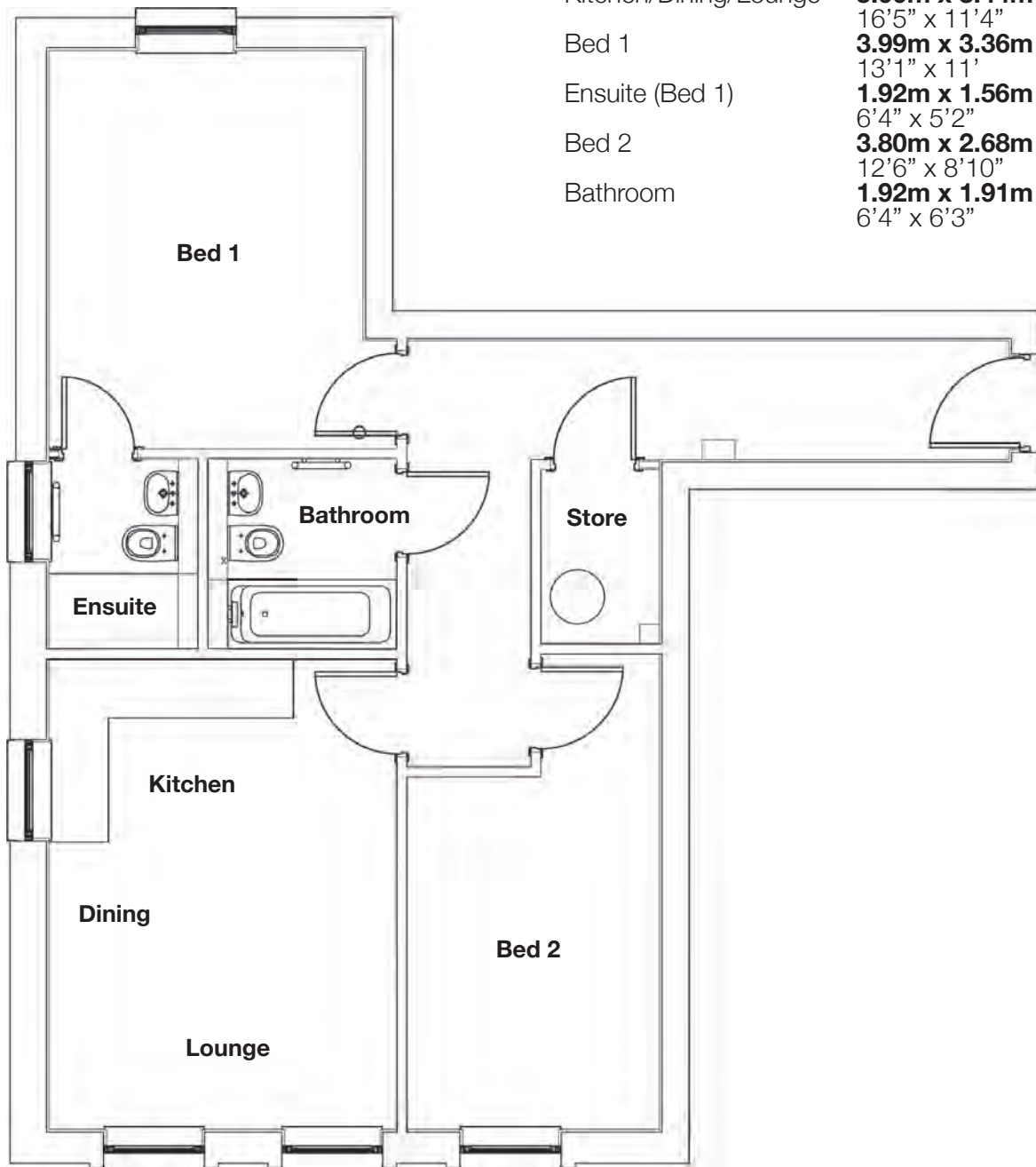


HERON POINT
NORTHENDEN



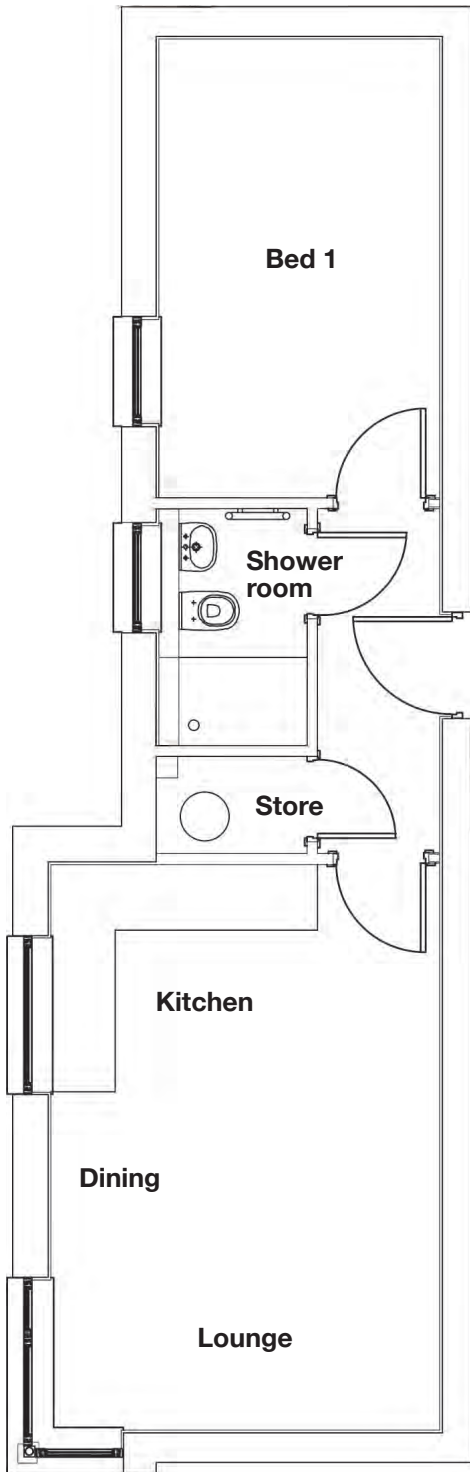
A P A R T M E N T - 4

Kitchen/Dining/Lounge	5.00m x 3.44m 16'5" x 11'4"
Bed 1	3.99m x 3.36m 13'1" x 11'
Ensuite (Bed 1)	1.92m x 1.56m 6'4" x 5'2"
Bed 2	3.80m x 2.68m 12'6" x 8'10"
Bathroom	1.92m x 1.91m 6'4" x 6'3"





HERON POINT
NORTHENDEN

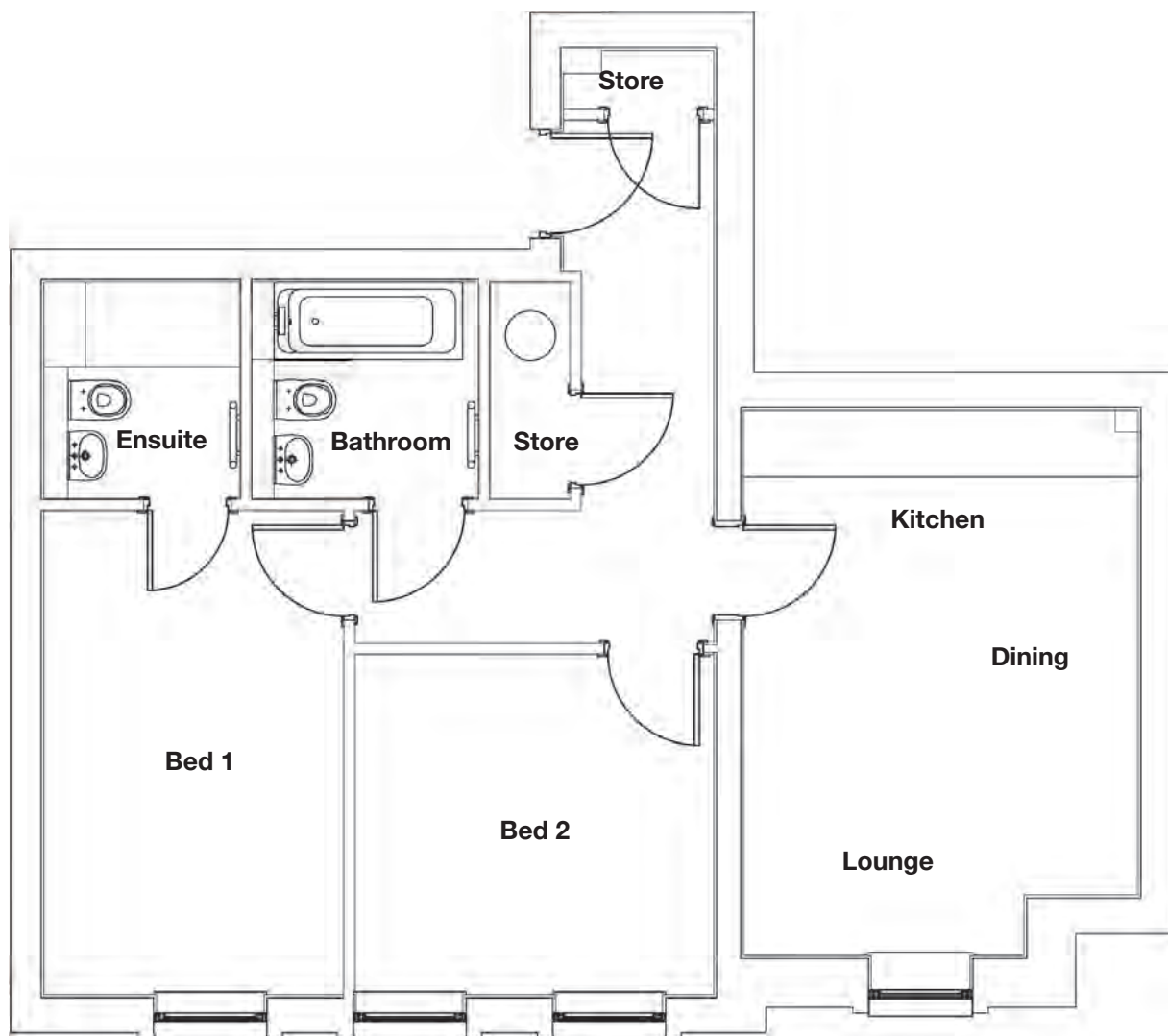


A P A R T M E N T - 5

Kitchen/Dining/Lounge **5.17m x 3.55m**
16'12" x 11'8"
Bed 1 **4.23m x 2.63m**
13'11" x 8'7"
Bathroom **2.20m x 1.38m**
7'3" x 4'6"



HERON POINT
NORTHENDEN

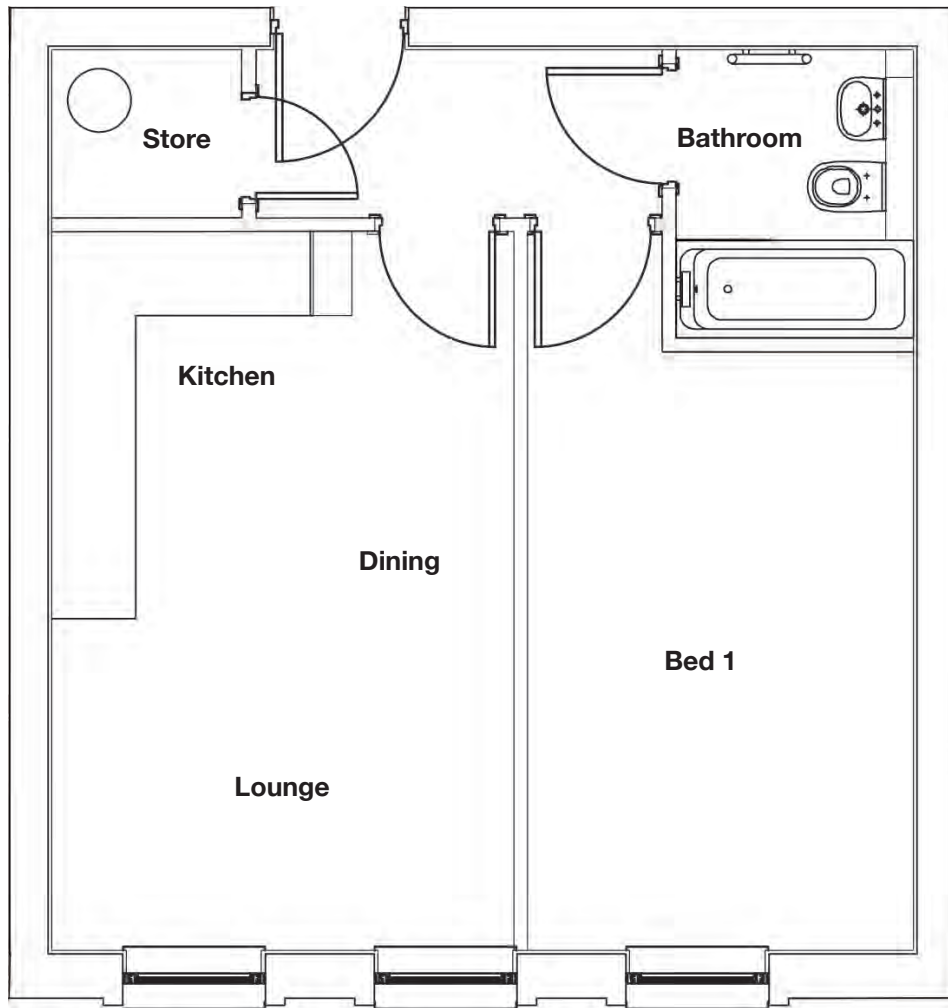


 A P A R T M E N T - 6

Kitchen/Dining/Lounge	5.18m x 3.81m 17' x 12'6"
Bed 1	4.68m x 2.67m 15'4" x 8'9"
Ensuite (Bed 1)	1.96m x 1.78m 6'5" x 5'10"
Bed 2	3.38m x 3.26m 11'1" x 10'8"
Bathroom	2.05m x 1.96m 6'9" x 6'5"



HERON POINT
NORTHENDEN

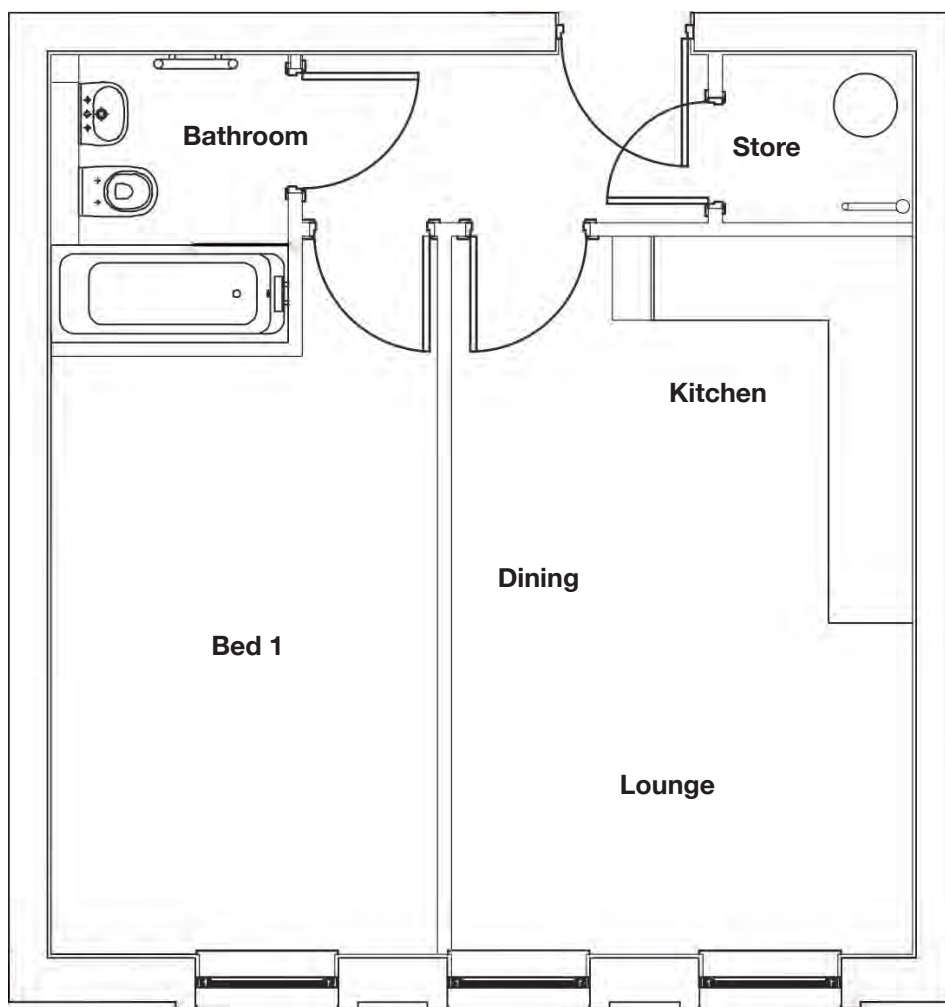


A P A R T M E N T - 7

Kitchen/Dining/Lounge	5.44m x 3.33m 17'10" x 10'11"
Bed 1	4.57m x 2.85m 15' x 9'4"
Bathroom	2.06m x 1.71m 6'9" x 5'7"



HERON POINT
NORTHENDEN



A P A R T M E N T - 8

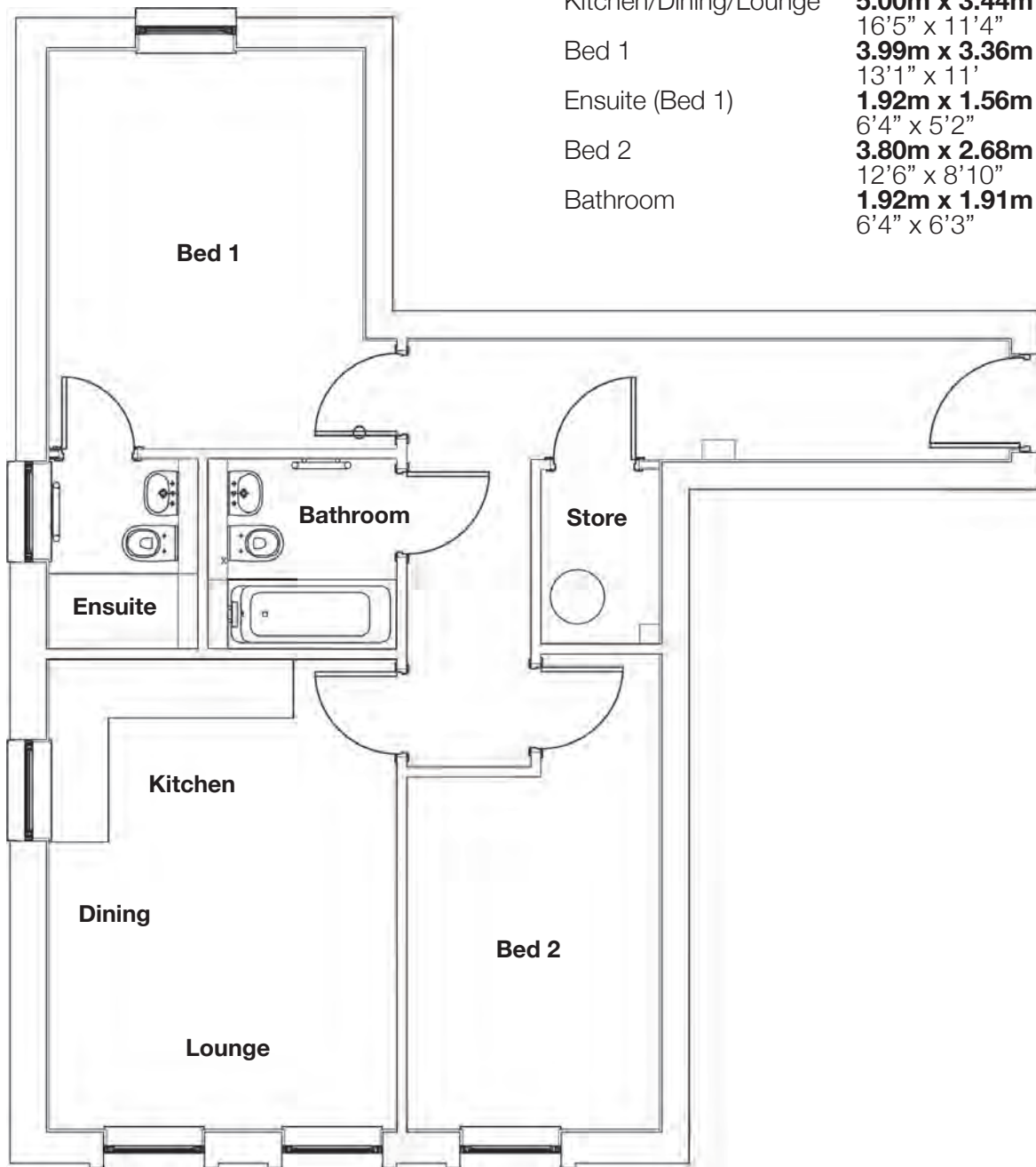
Kitchen/Dining/Lounge	5.44m x 3.33m 17'10" x 10'11"
Bed 1	4.57m x 2.85m 15' x 9'4"
Bathroom	2.06m x 1.71m 6'9" x 5'7"



HERON POINT
NORTHENDEN

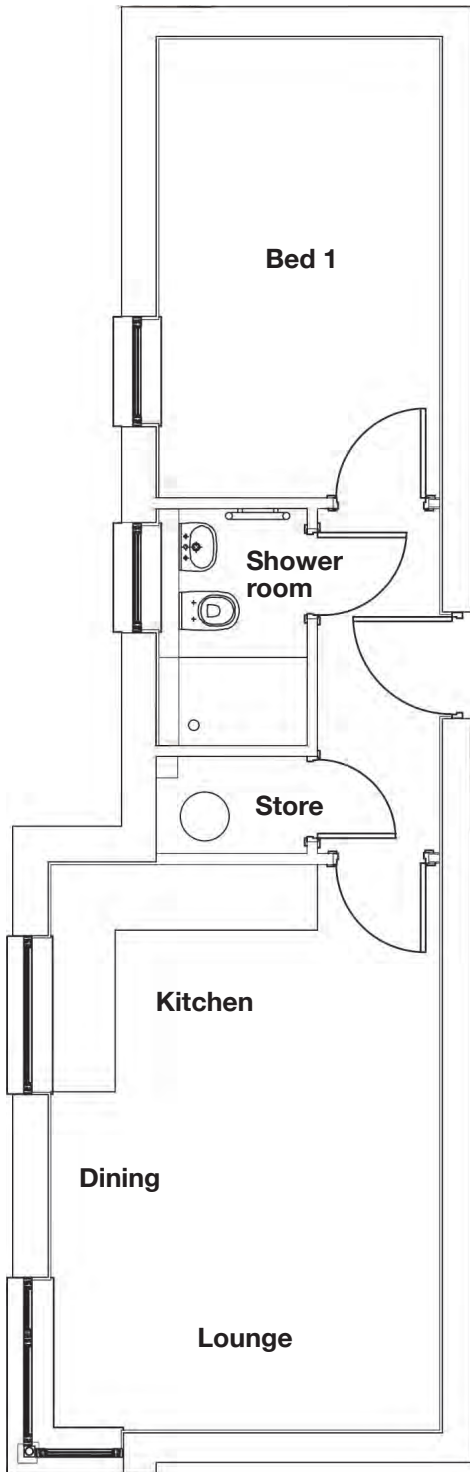
 APARTMENT - 9

Kitchen/Dining/Lounge	5.00m x 3.44m 16'5" x 11'4"
Bed 1	3.99m x 3.36m 13'1" x 11'
Ensuite (Bed 1)	1.92m x 1.56m 6'4" x 5'2"
Bed 2	3.80m x 2.68m 12'6" x 8'10"
Bathroom	1.92m x 1.91m 6'4" x 6'3"





HERON POINT
NORTHENDEN



A P A R T M E N T - 1 0

Kitchen/Dining/Lounge	5.17m x 3.55m 16'12" x 11'8"
Bed 1	4.23m x 2.63m 13'11" x 8'7"
Bathroom	2.20m x 1.38m 7'3" x 4'6"



HERON POINT
NORTHENDEN



11
Outside
Terrace

 A P A R T M E N T - 1 1

Kitchen/Dining/Lounge	7.38m x 5.84 24'3" x 19'2"
Bed 1	5.18m x 3.68m 17' x 12'1"
Ensuite (Bed 1)	2.05m x 1.71m 6'9" x 5'7"
Bed 2	3.45m x 3.22m 11'4" x 10'7"
Bathroom	2.11m x 2.10m 6'11" x 6'11"



HERON POINT
NORTHENDEN

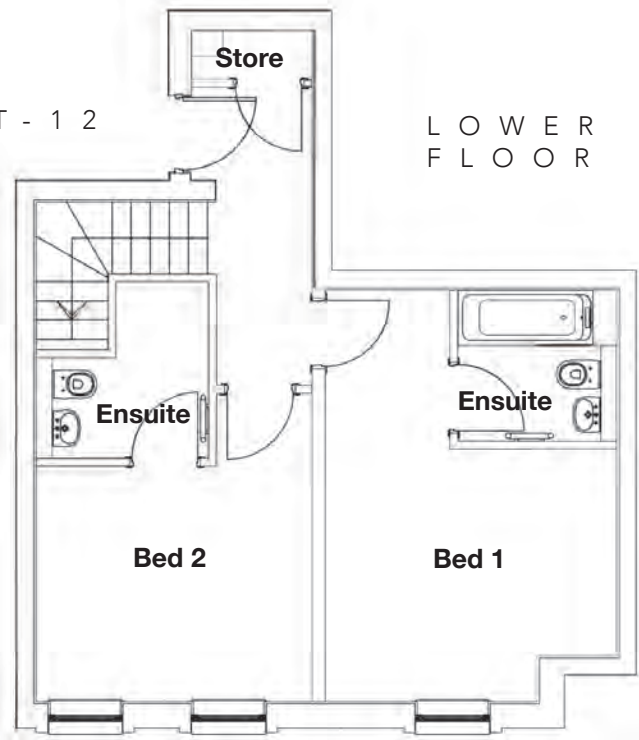


DUPLEX APARTMENT - 12

LOWER
FLOOR

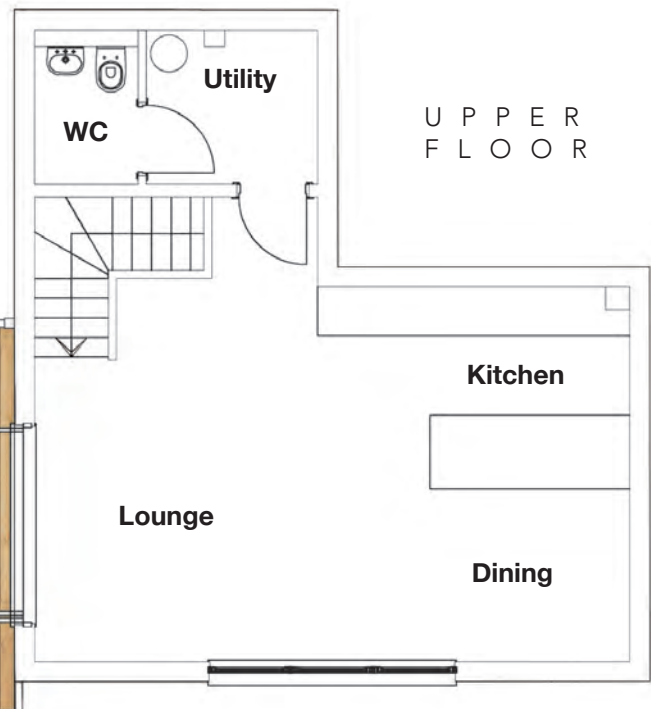
Lower Floor:

Bed 1	4.26m x 3.25m 13'12" x 10'8"
Ensuite (Bed 1)	2.06m x 2.00m 6'9" x 6'7"
Bed 2	3.67m x 3.46m 12'1" x 11'4"
Ensuite (Bed 2)	2.06m x 1.91m 6'9" x 6'3"



Upper Floor:

Kitchen/Dining/Lounge	7.38m x 5.84m 24'3" x 19'2"
Utility	1.97m x 1.91m 6'5" x 6'3"
Upper floor WC	1.77m x 1.49m 5'10" x 4'11"



UPPER
FLOOR