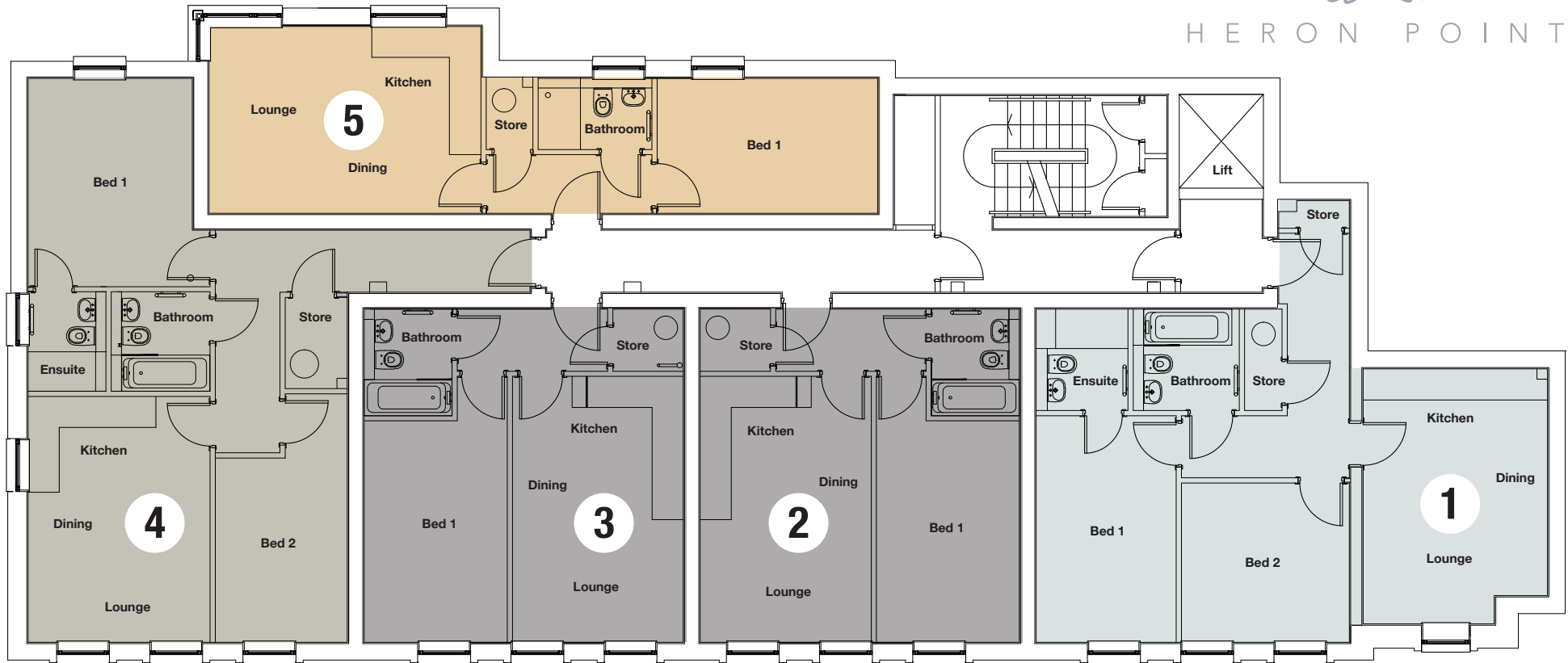


# FIRST FLOOR

391 PALATINE ROAD, NORTHENDEN



HERON POINT



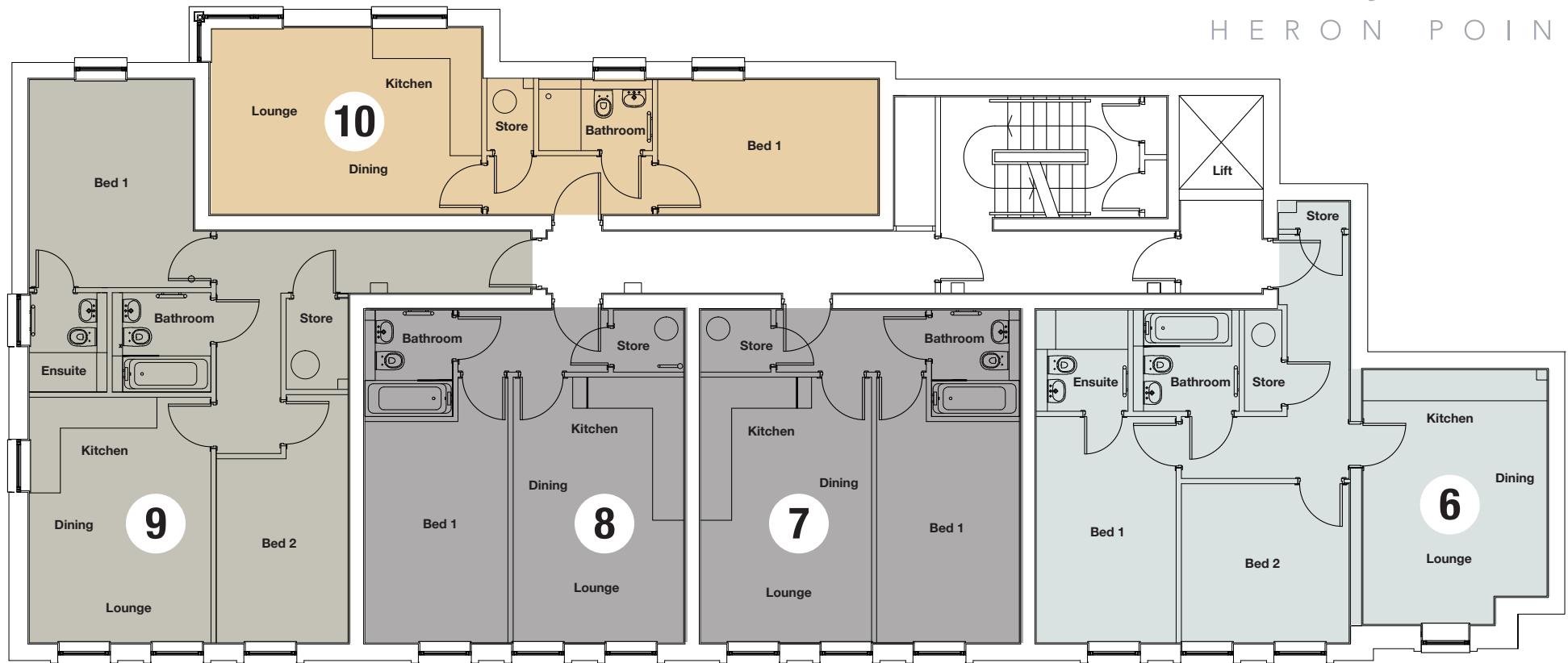
APARTMENT - 1		APARTMENT - 2 & 3		APARTMENT - 4		APARTMENT - 5	
Kitchen/Dining/Lounge	<b>7.35m x 3.87m</b> 24'1" x 12'8"	Kitchen/Dining/Lounge	<b>7.35m x 3.87m</b> 24'1" x 12'8"	Kitchen/Dining/Lounge	<b>7.35m x 3.87m</b> 24'1" x 12'8"	Kitchen/Dining/Lounge	<b>7.35m x 3.87m</b> 24'1" x 12'8"
Bed 1	<b>5.20m x 2.96m</b> 17'1" x 9'9"	Bed 1	<b>5.20m x 2.96m</b> 17'1" x 9'9"	Bed 1	<b>5.20m x 2.96m</b> 17'1" x 9'9"	Bed 1	<b>5.20m x 2.96m</b> 17'1" x 9'9"
Ensuite (Bed 1)	<b>7.35m x 3.87m</b> 24'1" x 12'8"	Bathroom	<b>2.00m x 1.73m</b> 6'7" x 5'8"	Ensuite (Bed 1)	<b>7.35m x 3.87m</b> 24'1" x 12'8"	Bathroom	<b>2.00m x 1.73m</b> 6'7" x 5'8"
Bed 2	<b>4.11m x 3.20m</b> 13'6" x 10'6"			Bed 2	<b>4.11m x 3.20m</b> 13'6" x 10'6"		
Bathroom	<b>2.00m x 1.73m</b> 6'7" x 5'8"			Bathroom	<b>2.00m x 1.73m</b> 6'7" x 5'8"		

# SECOND FLOOR

391 PALATINE ROAD, NORTHENDEN



HERON POINT



APARTMENT - 6

Kitchen/Dining/Lounge

**7.35m x 3.87**

24'1" x 12'8"

Bed 1

**5.20m x 2.96m**

17'1" x 9'9"

Ensuite (Bed 1)

**7.35m x 3.87m**

24'1" x 12'8"

Bed 2

**4.11m x 3.20m**

13'6" x 10'6"

Bathroom

**2.00m x 1.73m**

6'7" x 5'8"

APARTMENT - 7 & 8

Kitchen/Dining/Lounge

**7.35m x 3.87m**

24'1" x 12'8"

Bed 1

**5.20m x 2.96m**

17'1" x 9'9"

Bathroom

**2.00m x 1.73m**

6'7" x 5'8"

APARTMENT - 9

Kitchen/Dining/Lounge

**7.35m x 3.87m**

24'1" x 12'8"

Bed 1

**5.20m x 2.96m**

17'1" x 9'9"

Ensuite (Bed 1)

**7.35m x 3.87m**

24'1" x 12'8"

Bed 2

**4.11m x 3.20m**

13'6" x 10'6"

Bathroom

**2.00m x 1.73m**

6'7" x 5'8"

APARTMENT - 10

Kitchen/Dining/Lounge

**7.35m x 3.87m**

24'1" x 12'8"

Bed 1

**5.20m x 2.96m**

17'1" x 9'9"

Bathroom

**2.00m x 1.73m**

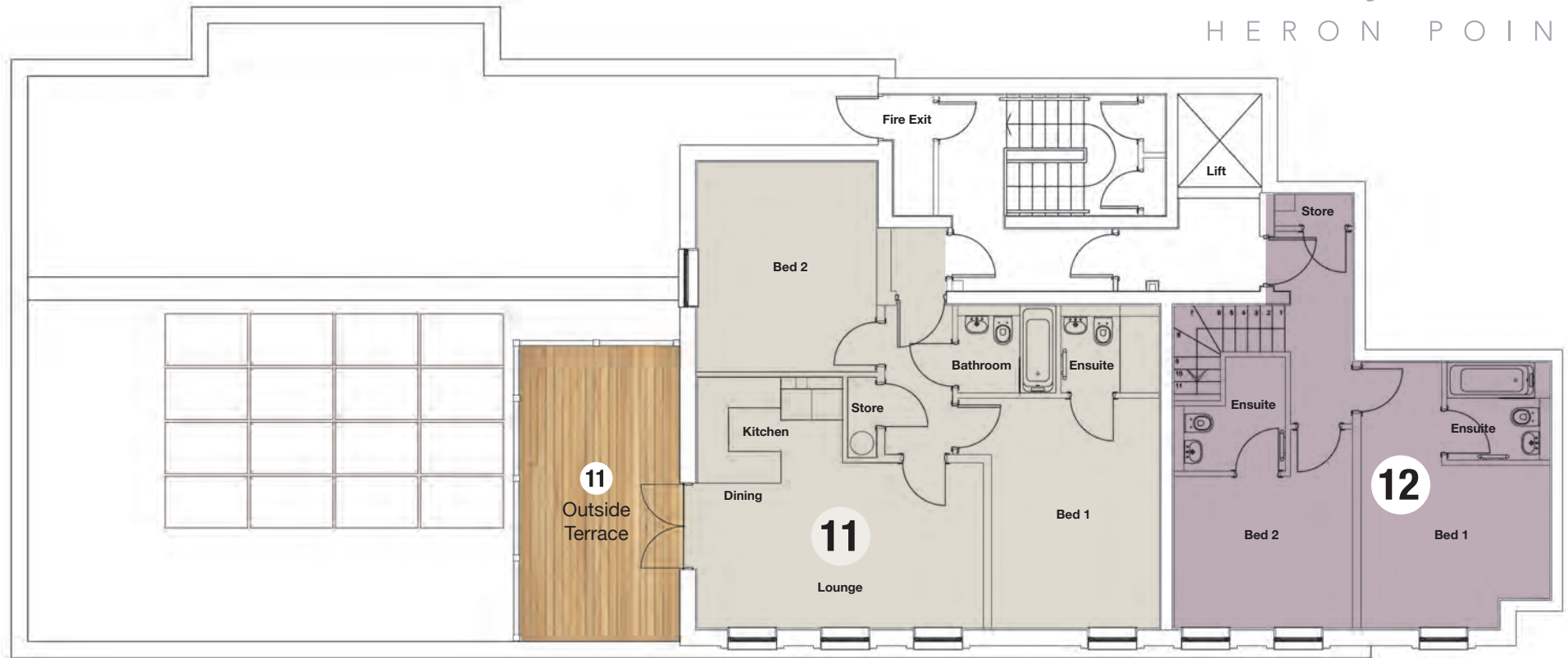
6'7" x 5'8"

# THIRD FLOOR

391 PALATINE ROAD, NORTHENDEN



HERON POINT



APARTMENT - 11

Kitchen/Dining/Lounge	<b>7.35m x 3.87</b> 24'1" x 12'8"
Bed 1	<b>5.20m x 2.96m</b> 17'1" x 9'9"
Ensuite (Bed 1)	<b>7.35m x 3.87m</b> 24'1" x 12'8"
Bed 2	<b>4.11m x 3.20m</b> 13'6" x 10'6"
Bathroom	<b>2.00m x 1.73m</b> 6'7" x 5'8"

DUPLEX APARTMENT - 12

Bed 1	<b>5.20m x 2.96m</b> 17'1" x 9'9"
Ensuite (Bed 1)	<b>2.00m x 1.73m</b> 6'7" x 5'8"
Bed 2	<b>5.20m x 2.96m</b> 17'1" x 9'9"
Ensuite (Bed 2)	<b>2.00m x 1.73m</b> 6'7" x 5'8"

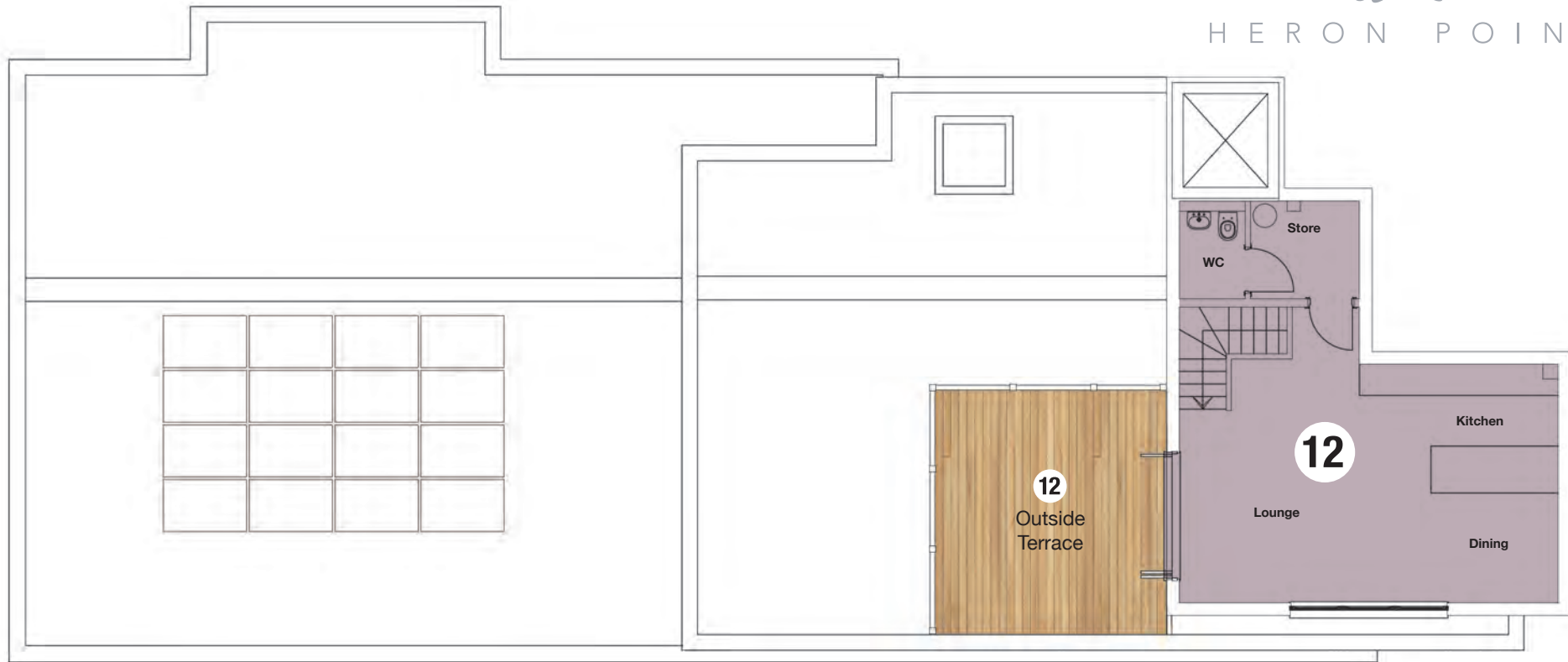
(See fourth floor plan for kitchen/Dining/Lounge area)

# FOURTH FLOOR

391 PALATINE ROAD, NORTHEENDEN



HERON POINT



DUPLEX APARTMENT - 12

Kitchen/Dining/Lounge	<b>7.35m x 3.87m</b> 24'1" x 12'8"
Storage	<b>4.11m x 3.20m</b> 13'6" x 10'6"
Upper floor WC	<b>2.00m x 1.73m</b> 6'7" x 5'8"

(see third floor layout for entrance and bedrooms/ensuites)

  
**MANSION HOUSE GROUP**  
BUILDING DESIRABLE HOMES

MANSION HOUSE GROUP LTD  
8-10 Old Market Place, Altrincham, Cheshire  
WA14 4DF

0161 929 7662

[mansionhousegroup.com](http://mansionhousegroup.com)