

Data in a Minute

Where data management concepts are explained in under a minute



Data Flow
In DataZap

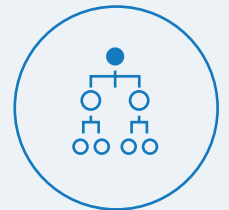
What is a 'Data flow'?

A 'Data flow', in the framework of ChainSys' smart data platform, is the building block for any data movement activity.

A 'data flow', in simple terms, is a container that holds extraction, transformation, mapping, pre-validation, loading information for a data element.

For example, an Item/Material 'data flow' will have all the relevant information needed to move it from source to target, with referential integrity, and prevalidations.

'Data flows' provide an 80% jumpstart to migrations, integrations, MDM and other data movement projects



Data Flow

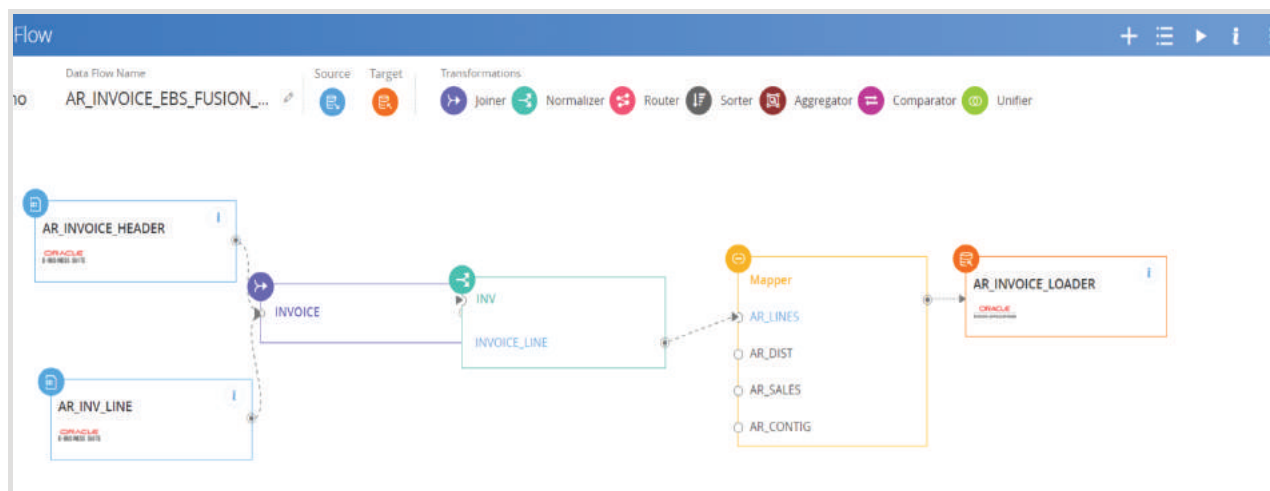
Data Flow In dataZap

A 'data flow' can also be defined as a 'configurable unit within a data migration'. Here's what we mean: Components like 'Extracts' and 'Loaders', can be added to a 'data flow' using simple drag and drop functions. When that is done, a 'data flow' essentially becomes your enabler for the data transfer from source to target.

On top of 'Extracts' and 'Loaders', one can add business transformations and validations using 'TAPs' (Transformation APIs), 'VAPs' (Validation APIs), or SOAP/REST services, which can be consumed by any third-party application or tool. This further transforms the 'data flow' into a complete data transfer unit, with migration, validation & transformation logic built in.

A string of 'data flows', known as a 'migration flow' can be created to encompass an entire migration. This process essentially transforms manual work into carefully sequenced 'data flows' or 'migration flows'.

Below is an example of the 'data flow' workbench in dataZap. The mappings, transformations, validations, extraction & loading logic are pre-built:



Contributed by
Krishnan Ganesan
Product Owner & Head of Sales

Krishnan is a passionate leader and has creatively solutioned multiple 'Smart Data' projects for Organizations across the globe.

Nearing a decade in ChainSys, he has also had experience in key sales & pre-sales roles and is a respected subject matter expert in the ERP space.

One Platform for your

End to End

Data Management needs

Smart Data Platform™



Data Migration
Data Reconciliation
Data Integration



Data Quality Management
Data Governance
Analytical MDM



Data Analytics
Data Catalog
Data Security & Compliance

www.chainsys.com