

dataZense for

# Data Analytics



 dataZense™ Whitepaper

# Connect, Collect, Analyze and Predict

Data Visualization and Reporting	Data Profiling
Enterprise Data Management	Predictive Analytics and Machine Learning
Internet of Things	Prescriptive Analytics

## Enterprise Data Analytics

Enterprise Data Analytics allows an organization to analyze and process data in a meaningful way. In today's competitive environment, businesses recognize the need to realize the full potential of using their Big Data to serve existing customers better and gain market share, which has propelled organizations to start looking at Cloud-based data analytics solutions.

Transforms data into rich visuals for organizing and analyzed to focus on what matters. With an increasing spectrum of advanced analytics, from necessary ad hoc reports to analytics/predictive modeling, users can explore and visualize data across multiple dimensions with minimal to zero technical assistance.

- Data Reporting using visualization organizes data into meaningful summaries, measures core metrics, and reports these to provide information at a basic level.
- Data Profiling on structured and unstructured data
- Enterprise Data Management journey accomplished with consummate Ease and eclat
- Preconfigured Dashboards for Spend Analytics, Supplier 360, Customer 360, Product 360, Product Profitability, HR Headcount and C-Suite Analytics.
- Predictive Analytics and Machine Learning
- Internet of Things (IoT)

## Testimonial

dataZense helped our business to create the Enterprise Data Management model in less than 16 weeks for over ten enterprise systems. Accurate insights designed for HR Planning, Spend Analytics, and 80/20 model for Customers.

## Chief Data officer

A data center power equipment manufacturer. Hi-Tech Manufacturing Company

dataZense helped the largest Harddisk manufacturer reconcile over 8 Billion serialized parts from multiple systems, including SAP, Oracle, and Others. The accurate reconciliation and reporting helped reduce the serialized data and maintain clean serial numbers for maintenance.

## Vice President

A Computer Company, Hi-Tech Manufacturing Company

We had so many disconnects with the Configurations in Oracle and other enterprise systems. We used dataZense to identify the gaps and present the comparative views to business users. The business users approved the synchronization of the configurations from the dashboards. ChainSys products, processes, and people helped me from start to end.

## Delivery Manager – Data and Integrations

An Optical Products Company, Industrial Manufacturing Company

We offer the best data analytics solution to support your quest for a data-driven organization. We assure a 70% acceleration in your analytics implementation with our comprehensive Data Analytics platform.

## Charlie Massoglia

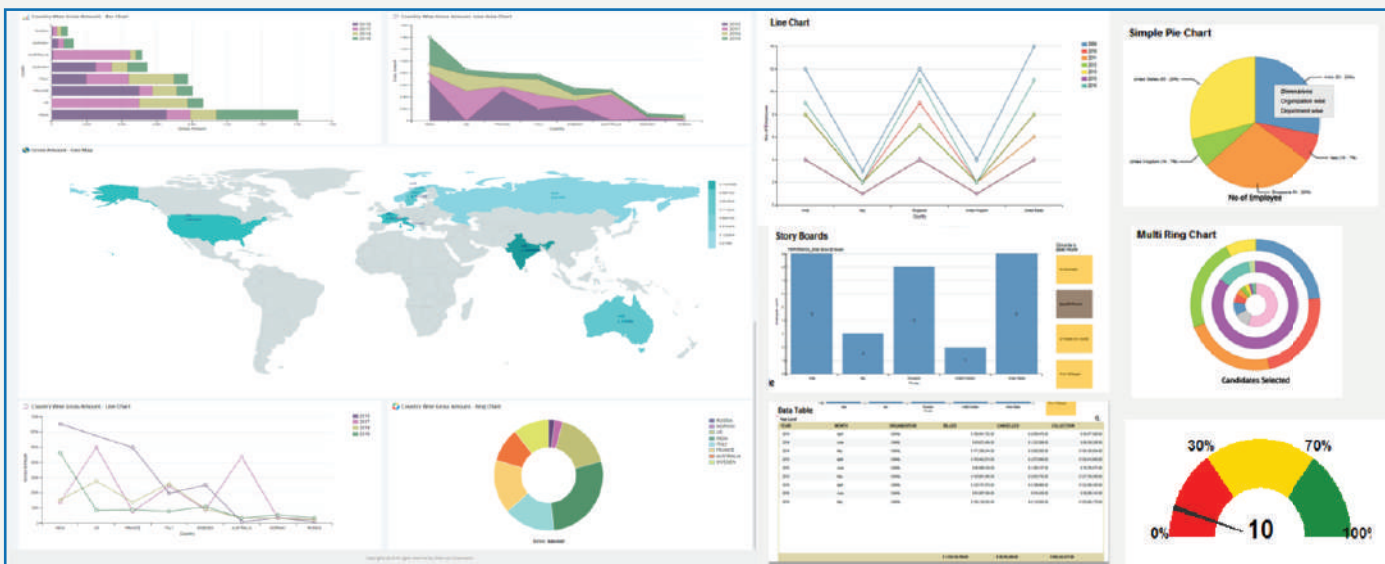
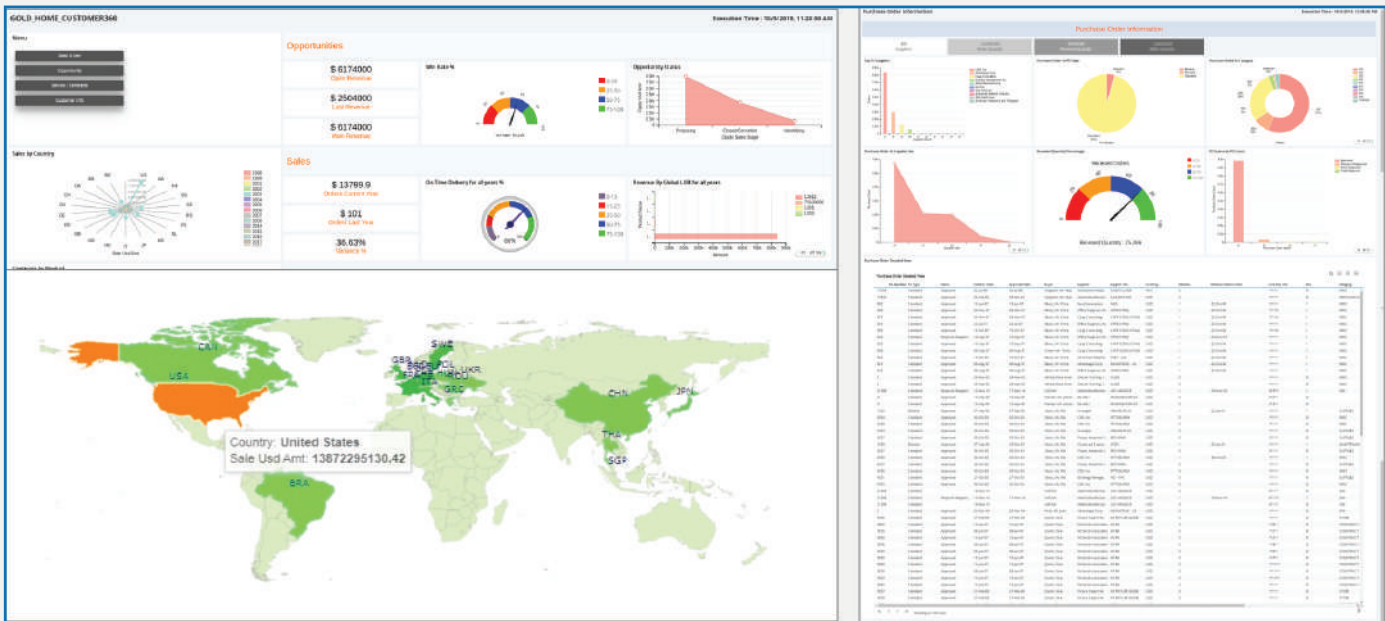
CIO ChainSys Corporation

### Clients:



# An Introduction to Smarter Decision Making

Now that you have all your data migrated, cleansed, and governed, our visualization platform allows your leaders and associates to curate their data into an easy to understand visual representation. The dashboards will enable employees to save time and work more efficiently.



# Data Analytics Use Cases, Benefits, and Differentiators

Valid Use Cases	Benefits	Differentiators
<ul style="list-style-type: none"> <li>• Centralize the structured, unstructured, and machine data into a Data Lake.</li> <li>• Data Analytics using Predictive, Prescriptive, and Descriptive models.</li> <li>• Data Visualization</li> <li>• Archive Oracle and SAP data into a data lake and provide inquiry screens.</li> <li>• Reconciliation for Data Migration and Data integration projects</li> <li>• Data insights for Data Profiling and Analytical MDM.</li> <li>• Datamart modeling for facts and dimensions</li> </ul>	<ul style="list-style-type: none"> <li>• AI and ML-driven Analytical algorithms available for advanced Analytics</li> <li>• Business users can efficiently operate. Even make changes to the dashboards.</li> <li>• Complex decision making can be made more accessible to data insights.</li> <li>• Ad-hoc reporting made simplified</li> <li>• Rapid implementation models: Six weeks – Data Centralization Six weeks – Data Analytics and Visualizations</li> <li>• Drag and drop interface for Analytics Platform</li> <li>• High Performance</li> </ul>	<ul style="list-style-type: none"> <li>• Prebuilt extract adapters for popular ERP Systems (SAP S/4HANA, SAP C/4HANA, SAP ECC, Oracle Cloud Applications, Oracle E-Business Suite, Salesforce, Microsoft Dynamics, etc.)</li> <li>• Take action right from the presented data. (Reschedule sales order line, change safety stock level, posting journals, purchase order mass close, production order mass close, change scheduled dates, components, resources, etc.)</li> <li>• Cloud-First. Ease of use.</li> <li>• Mobile Ready.</li> <li>• Includes a catalog that allows profiling, metadata management, and categorizing all data present in your data lake.</li> <li>• Ready to use Dashboards and data models for Oracle Cloud ERP, SAP S/4, C/4, SFDC, EBS, Workday, and more.</li> <li>• Ready to use dashboards: Customer 360, Products 360, Supplier 360 + more</li> <li>• Low code to No code</li> <li>• Smooth Cutover</li> <li>• Can handle a high volume of data</li> <li>• Business rules engine for complex routing of data</li> </ul>

# Demonstration Case Study Comprehensive Data Analytics Platform

<p><b>Multi-Source Support</b></p> <p>Connect source supporting JDBC with bigdata, elastic search, excel, and CSV to pull out any data needed for visualization and analytics.</p>	<p><b>Real-Time data</b></p> <p>Provide comprehensive real-time data for a 360-degree view of actionable information. Capable of connecting quickly to develop, visualize, and share data insights.</p>	<p><b>Interactive Responsive Views</b></p> <p>The drill-down feature facilitates immediate access to transform, analyze, and visualize any data across multiple dimensions.</p>
<p><b>Interactive Responsive Dashboards</b></p> <p>Allows monitoring the health of a business using live dashboards with a complete analytics life cycle. It provides a web-based drag and drop interface for dashboard design for rich navigation and drill-downs with a set of filter controls.</p>	<p><b>Design once, view anywhere</b></p> <p>The mobile app allows users to share and publish the views to consume the services for visualization through mobile.</p>	<p><b>Solutions for Visualization</b></p> <p>Cloud Analytical platform for business users. Supports exporting data in CSV, Excel, and PDF formats. Along with the option of auto emailing the reports to the recipients.</p>

## Predictive Analytics and Machine Learning Algorithms

Predictive analytics is an advanced analytics method that utilizes historical and new data to forecast future activity and predict trends/behaviors based on innovative analytical queries, logistic regression statistical analysis, and automated machine learning algorithms.

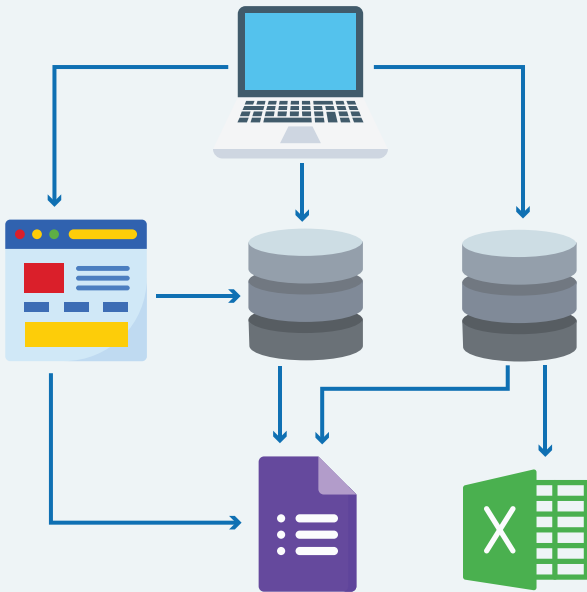
Predictive analytics is rapidly growing in parallel with the growth of Big Data. As organizations aggregate large volumes of data in Hadoop clusters and other Big Data platforms, data mining opportunities are becoming more rampant for predicting future scenarios.

This area takes the EDM process to the next level and gives organizations insight into predictive modeling for better decision-making by embedding predictive data into its future planning. Key benefits are:

- Automates analytical model building using AI
- Allows faster analysis of more significant and more complex data
- Ability to transform decision making by modeling future business scenarios based on automated “what-if” scenarios. For example, adjust plant capacity based on previously unforeseen business needs
- Realize tremendous cost savings by predicting future outcomes such as maintenance schedules, plant shut-downs, service intervals, etc.

## Supported Machine Learning Algorithms

- Linear / Multilinear Regression
- Logistics Regression
- Time-series Analysis (ARIMA)
- K-Means Clustering
- KNN Classification
- Ridge / LASSO / Elastic Net Regression
- SVM (Regression / Classification)
- Naive Bayes Classification
- Decision Tree
- Random Forest



## Smart Data Adapters for Data Extracts

dataZense uses the ready to use 9000+ Smart Data Adapters for Data Extraction, Data Loading, and Data Mappings (Source to target mappings) into the Data Lake. The Adapters helps the projects to start with over 90% readiness apart from customizations.

dataZense support the following Applications:

(The sequence of the topics should be: (1) Cloud Applications (2) Enterprise Applications (3) PLM, MES and CRM (4) HCM and Supply Chain Planning (5) Project Management and EAM (6) Enterprise Storage Systems (7) Big Data (8) No SQL Databases (9) Databases (10) Message Broker)

## Top 50 Reasons dataZense Analytics Platform Can Work for You!

dataZense approaches building complex Data Analytics for Business needs with Simplicity and Robustness. The Platform stays on top of the race. It is ready to use data adaptors to create the data lake data models and centralize the data in a standard data model for over 50+ major applications ready to use smart data adaptors (9000+). The Platform involves no programming. All it needs is straightforward configurations to accomplish Data Profiling, Data Extraction, Transformation, Loading into Data Lake, Data Cleansing, and Data Analytics –“A Holistic Complete Solution for Data Analytics.”

**“One of the Fortune Hi-Tech Office Equipment manufacturers achieved implementing the Data Analytics and created over 1000 dashboards for their business needs with no technical help.”**

# Accelerators Helps to do it faster

- Drag and Drop UI for Analytics configuration Tools
- Ready to use application connectors
- Ready to use data adaptors / API gateways to virtualize and extract data from over 50+ endpoints.
- Very simple to add or modify business needs on a dashboard.
- 50+ End Points Supported
- 9000+ Smart Data Adaptors

- One Single Platform for Data Profiling, Data Extraction, Transformation, Loading into Data Lake, Data Cleansing, and Data Analytics
- Artificial Intelligence and Machine Learning algorithms help to achieve Descriptive, Predictive, and Prescriptive modeling and analytics.
- In-Built Connect for any ERP, CRM, HCM, MES, PLM, and other systems
- Index the data in Solr for easy, quick data retrieval.
- Control the access of the entities, attributes, and actual data based on roles.
- Publish the data available in the data lake as a web service.
- Drill down and up of the data analytics results with multiple dimensions against the fact data – this helps in improving the reporting needs
- 22+ Years of Product Innovation and Investments
- Joint Development Partnerships

Proven Solution  
**Battle-tested &  
approved Solution**



# Enterprise Ready

## Can scale to Support Large Enterprises

- Flexible connection methods support
- Handles heavy processing and can take billions of data for analytics.
- Can handle machine data
- Robust Error Handler
- Distributed Computing
- Quarterly Product Releases
- Quarterly Business Reviews
- Joint Development Partnerships
- Adaptors available to handle historical data from Legacy Applications
- Robust Logger

- No-code Analytics Platform.
- Artificial Intelligence applied for Descriptive, Predictive, and Prescriptive modeling and analytics.
- Parallel processing engine to speed up returning analytics results
- Full Data can be visualized and viewed in charts and data grids.
- Actions performed from the visual output.
- Data Virtualization engine for your enterprise
- Preconfigured Reporting Catalog available and web services available.
- CLOUD First
- Mobile First
- Big Data Ready
- Automatic Testing Engine / BOTS

## Innovation

# Technology Leadership

# Smart Features

## Why didn't I think of that/ doing it better ??

- 25+ Chart Types are available, including Hierarchy, Pivot Tables, Heatmaps, Geo Maps, Gantt Chart, and Slicers.
- Chart Subtypes includes Regular bar, Block Matrix, Floating Bar and Multi KPI Bar
- Data can be visualized from Facts and also Cubes.
- More than 1 data set can be used in a dashboard that comprises more than one view.
- Chart Options include Horizontal Chart, Drilldown, Enable Filter prompt, Enable Log axis, Stacked, Storyboard, Double Y-axis, show gradient, Bounce, Data markers, Pagination, enable KPI selector and Enable chart legend
- Allows action on the Data Grid. Action URL can be passed with input data.
- Automatic color selection to improve Usability, users can change to their taste as well.
- The data grid can show any high data volume even more significant than 1 M and export the data into multiple Excel files for all data (Batches of 1 Million)
- Data drilled up and down to view integrity and easy reporting
- Inbuilt testing framework to run multiple test cases
- Release & Configuration Management with GitLab and SVN

# Usability

## Business user and Administrators (Architects and System Admins) Usability

- Businesses can centralize, visualize, and analyze the data quickly.
- Business can use this Platform for effective reporting across applications
- Integrations and Integrity checks can be done on heterogeneous applications and databases.
- Identify the PII Data in your enterprise.
- Sensitive data can be protected from wrong use
- Access your dashboards from any portal using API Gateways
- Advance your Performance in processing jobs and User log Monitor
- Instant mobility
- Native mobile apps experience
- Business User Friendly
- Customer-centric Design

- Identify Sensitive data in your enterprise and protect them from data breaches.
- Data Security (At rest and motion)
- Single Sign-on (AD, On-prem, and Cloud)
- Access Control Management (Users & Groups)
- Self-Contained User Management
- Access Control to the datasets provided by publishing the objects as a service that is subscribed. The data within an entity will be filtered based on the role.
- User management dashboards to review all User Logs and usage
- Roles Based Access Control (Privileges)
- Data Encryption Capability
- Data Masking Capability
- Operational Security (Record Level)
- Auditing and Logging

# Security

## Data, User, and application security

Smart Team  
We are ready to help you!

- Flexible pricing models
- Data Analytics as a Service  
Analytics Design Factory
- 100+ Analytics Specialists
- 24 X 7 Global Product Support
- Quarterly Business Reviews

# Data Analytics Demonstration

## White Papers

- Technical Architecture for DataZense
- Enterprise Data Analytics
- Frequently asked questions



## Charlie Massoglia

VP & CIO, Chain-Sys Corporation.  
ChainSys Corporation

Former CIO for Dawn Food Products For 13+ years.  
25+ years experience with a variety of ERP systems.  
Extensive experience in system migrations & conversions. Participated in 9 acquisitions ranging from a single US location to 14 sites in 11 countries.  
Author of numerous technical books, articles, presentations, and seminars globally.

## Supported Endpoints ( Partial )

Oracle Sales Cloud, Oracle Marketing Cloud, Oracle Engagement Cloud, Oracle CRM On Demand, SAP C/4HANA, SAP S/4HANA, SAP BW, SAP Concur, SAP SuccessFactors, Salesforce, Microsoft Dynamics 365, Workday, Infor Cloud, Procore, Planview Enterprise One

Cloud Applications

Oracle E-Business Suite, Oracle ERP Cloud, Oracle JD Edwards, Oracle PeopleSoft, SAP S/4HANA, SAP ECC, IBM Maximo, Workday, Microsoft Dynamics, Microsoft Dynamics GP, Microsoft Dynamics Nav, Microsoft Dynamics Ax, Smart ERP, Infor, BaaN, Mapics, BPICS

Enterprise Applications

Windchill PTC, Oracle Agile PLM, Oracle PLM Cloud, Teamcenter, SAP PLM, SAP Hybris, SAP C/4HANA, Enovia, Proficy, Honeywell OptiVision, Salesforce Sales, Salesforce Marketing, Salesforce CPQ, Salesforce Service, Oracle Engagement Cloud, Oracle Sales Cloud, Oracle CPQ Cloud, Oracle Service Cloud, Oracle Marketing Cloud, Microsoft Dynamics CRM

PLM, MES & CRM

Oracle HCM Cloud, SAP SuccessFactors, Workday, ICON, SAP APO and IBP, Oracle Taleo, Oracle Demantra, Oracle ASCP, Steelwedge

HCM & Supply Chain Planning

Oracle Primavera, Oracle Unifier, SAP PM, Procore, Ecosys, Oracle EAM Cloud, Oracle Maintenance Cloud, JD Edwards EAM, IBM Maximo

Project Management & EAM

OneDrive, Box, SharePoint, File Transfer Protocol (FTP), Oracle Webcenter, Amazon S3

Enterprise Storage Systems

HIVE, Apache Impala, Apache Hbase, Snowflake, mongoDB, Elasticsearch, SAP HANA, Hadoop, Teradata, Oracle Database, Redshift, BigQuery

Big Data

mangoDB, Solr, CouchDB, Elasticsearch

No SQL Databases

PostgreSQL, Oracle Database, SAP HANA, SYBASE, DB2, SQL Server, MySQL, memsql

Databases

IBM MQ, Active MQ

Message Broker

Java, .Net, Oracle PaaS, Force.com, IBM, ChainSys Platform

Development Platform

# One Platform for your

End to End

Data Management needs

## Smart Data Platform™



Data Migration  
Data Reconciliation  
Data Integration



Data Quality Management  
Data Governance  
Analytical MDM



Data Analytics  
Data Catalog  
Data Security & Compliance

[www.chainsys.com](http://www.chainsys.com)