

Product DRIED SEAWEEDS GIGARTINA RADULA TYPE NARROWLEAF

Scientific Name MAZZAELLA LAMINAROIDES

Local Name (Chile) Luga cuchara, Luga corta.

Description Cold water seaweed. Green dark color (Phaeophyceae Family) Long leaves and short stipes. Intertidal habitat upto 15 m depth. Throughth northen and southern Pacific coasts up to Magellan; new Zeland and south Atlantic Ocean.

Extraction Season From September up to March (next year).

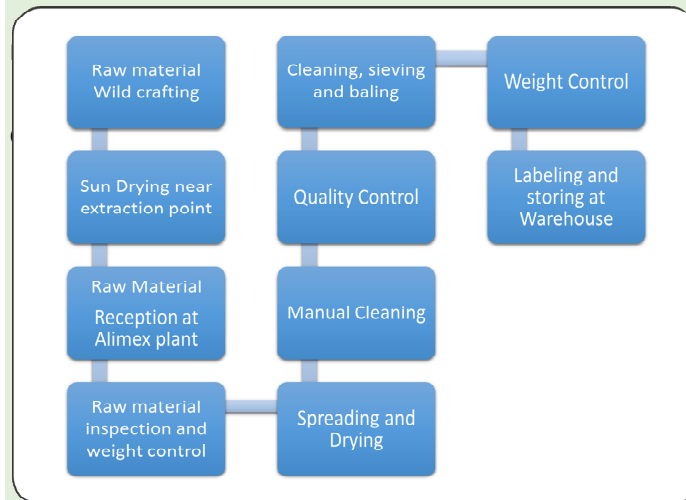
| Specifications | Moisture | Impurities | Bale Weight |
|----------------|----------|------------|-------------|
| | 18-20% | 5% | 60-90 kg |

Packing Bales from 60 to 90kg, over pallet. Maximum load per container 25tons.

Organoleptic Characteristics

Storage

Production Process



Shelf Life Indefinitive.

Usage Industrial, for carragenan extraction purpose.