

Product DRIED SEAWEEDS GIGARTINA RADULA TYPE BROADLEAF

Scientific Name SARCOTHALIA CRISPATA

Local Name (Chile) Luga negra, Luga larga.

Description Cold Water seaweed, with dark blue frond. The sizes can reach up to 1.5 mt of length and 1.2mt of width. It has a reproductive cycle of one year. In Chile it can usually be found from the V region to the south of the country.

Extraction Season From November up to April (next year).

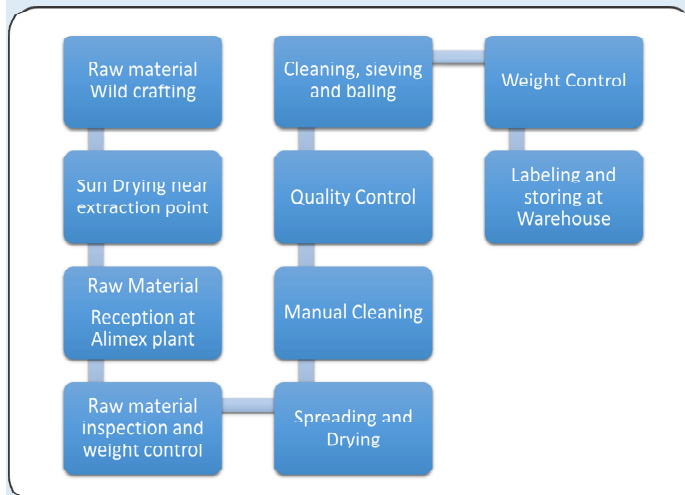
Specifications	Moisture	Impurities	Bale Weight
	18-20%	5%	60-90 kg

Packing Bales from 60 to 90kg, over pallet. Maximum load per container 25tons.

Organoleptic Characteristics Fresh and intense sweet sea aroma.

Storage Company warehouse.

Production Process



Shelf Life Indefinitive.

Usage Industrial, for carragenan extraction purpose.