

Product **DRIED SEAWEEDS GIGARTINA RADULA TYPE NARROWLEAF**

Scientific Name MAZZAELLA LAMINAROIDES

Local Name (Chile) Luga cuchara, Luga corta.

Description Cold water seaweed. Green dark color (Phaeophyceae Family) Long leaves and short stipes. Intertidal habitat upto 15 m depth. Throught northen and southern Pacific coasts up to Magellan; new Zeland and south Atlantic Ocean.

Extraction Season From September up to March (next year).

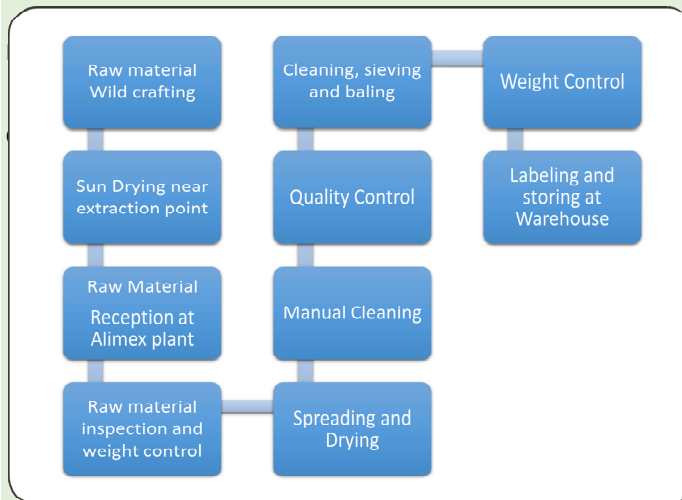
Moisture	Impurities	Bale Weight
18-20%	5%	60-90 kg

Packing Bales from 60 to 90kg, over pallet. Maximum load per container 25tons.

Organoleptic Characteristics

Storage

Production Process



Shelf Life Indefinitive.

Usage Industrial, for carragenan extraction purpose.