

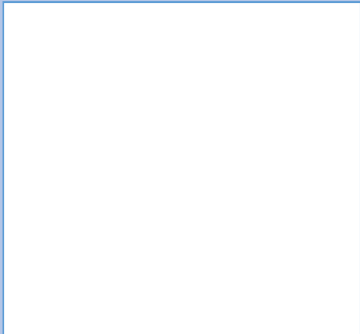
**Product** DRIED SEAWEEDS GIGARTINA RADULA TYPE SAND PAPER

**Scientific Name** SARCOTHALIA CRISPATA

**Local Name (Chile)** Luga negra, Luga lija

**Description** Cold Water seaweed, with dark blue frond, characterize for its roughness of the cistocarpic Fronds. The sizes can reach up to 1.5 mt of length and 1.2mt of width. It have a reproductive cycle of one year. In Chile It can is usually be found from the V region to the south of the country.

**Extraction Season (est.)** From November up to June (next year).



**Specifications**

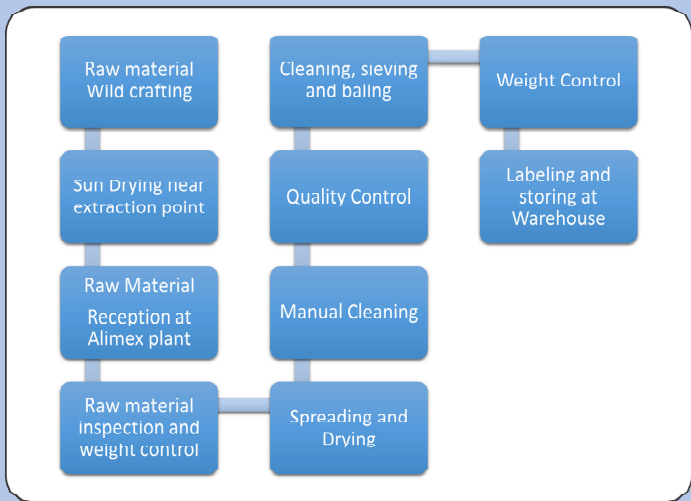
Moisture	Impurities	Bale Weight
18-20%	5%	60-90 kg

**Packing** Bales from 60 to 90kg, over pallet. Maximum load per container 25tons.

**Organoleptic Characteristics** Fresh and intense sweet sea aroma.

**Storage** Company warehouse.

**Production Process**



**Shelf Life** Indefinitive.

**Usage** Industrial, for carragenan extraction purpose.