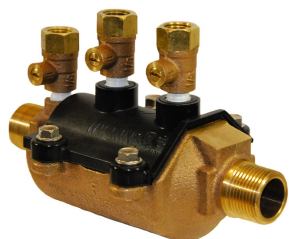


SPECIFICATION SUBMITTAL SHEET



APPLICATION

Designed for installation on water lines to protect against both backsiphonage and backpressure of polluted water into the water supply. Assembly shall provide protection where a potential health hazard does not exists. (Medium Hazard)

STANDARDS COMPLIANCE (Horizontal & Vertical)

- SAI GLOBAL WATERMARK



WATERMARK
AS/NZS 2845.1
LIC. 1379



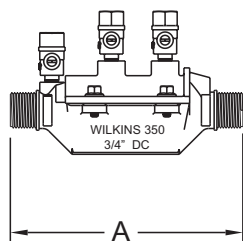
TYPE TESTED
AS/NZS 4020
LIC. 20111

FEATURES

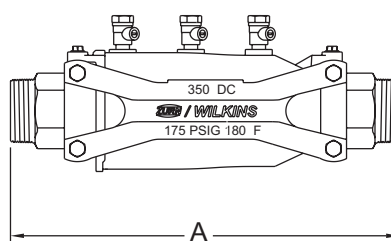
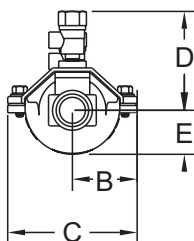
DN: □ 20 □ 25 □ 32 □ 40 □ 50
Maximum working water pressure 1200 kPa
Maximum working water temperature 82°C
Hydrostatic test pressure 2400 kPa
End connections Threaded BSPTM

MATERIALS

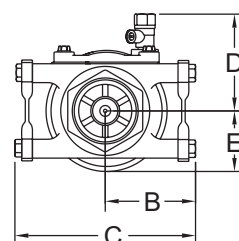
Main valve body Cast Bronze, ASTM B 584 (3/4-1")
Housing Reinforced Nylon
Fasteners Stainless Steel, 300 Series
Elastomers Silicone (FDA Approved)
Buna Nitrile (FDA Approved)
Internals Delrin, NSF Listed
Springs Stainless steel, 300 series
Tailpiece Cast Bronze, ASTM B 584
Struts Forged Brass ASTM B 124



(3/4" - 1")



(1-1/4" - 2")

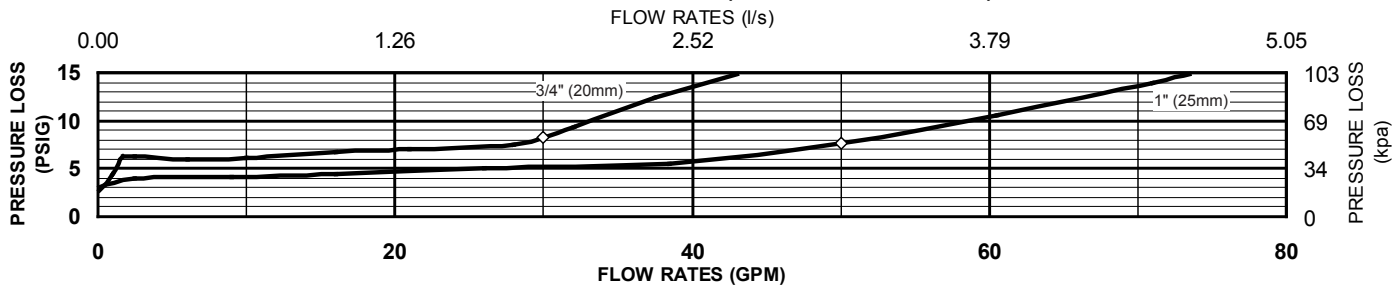


DIMENSIONS & WEIGHTS (do not include pkg.)

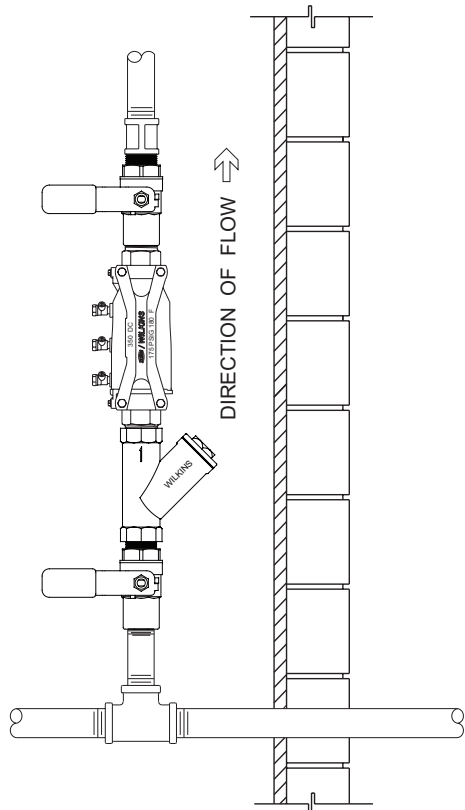
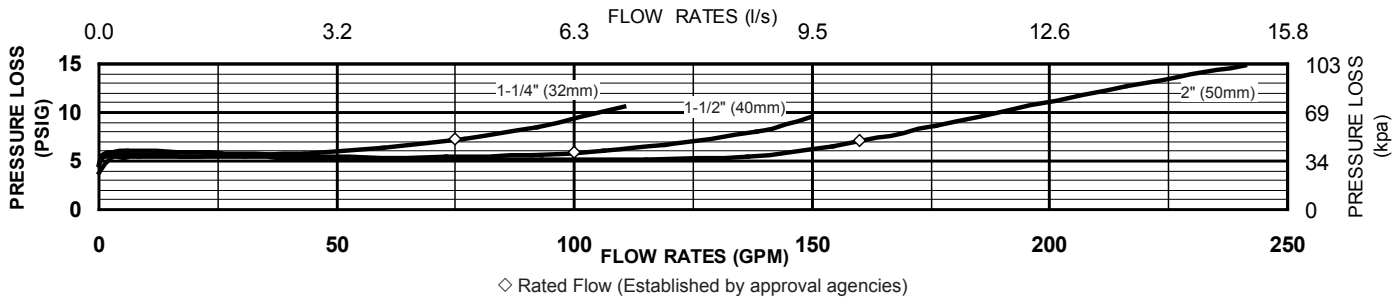
MODEL 350 SIZE		DIMENSIONS (approximate)										WEIGHT	
		A		B		C		D		E			
		in.	mm	in.	mm	in.	mm	in.	mm	in.	mm	lbs.	kg
3/4	20	6 5/8	168	1 7/8	48	3 3/4	95	3	76	1 1/4	32	2.3	1.0
1	25	7	178	2 1/16	52	4 1/8	105	3 1/4	83	1 3/4	45	3.0	1.4
1-1/4	32	14 3/8	367	3 3/8	86	6 3/4	171	3 3/4	95	2 1/4	57	17.2	7.8
1-1/2	40	14 3/8	367	3 3/8	86	6 3/4	171	3 3/4	95	2 1/4	57	17	7.7
2	50	14 3/8	367	3 3/8	86	6 3/4	171	3 3/4	95	2 1/4	57	18	8.2

FLOW CHARACTERISTICS

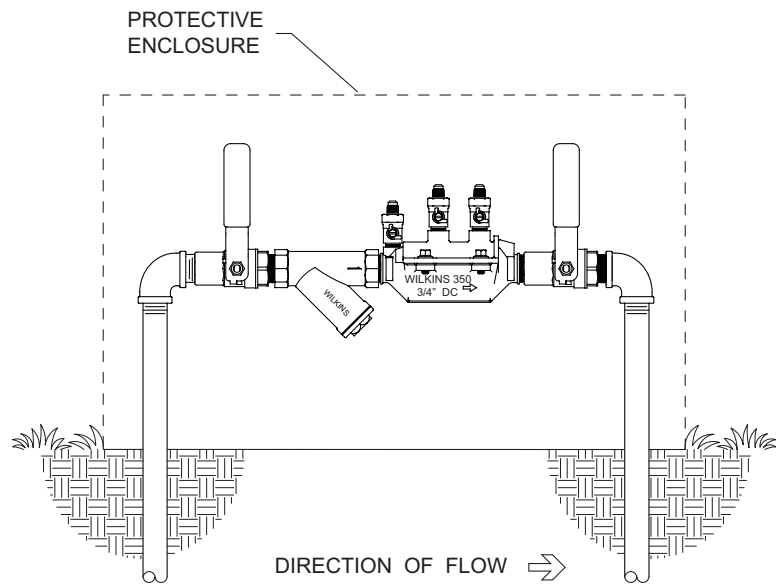
MODEL 350, 350XL 3/4" & 1" (STANDARD & METRIC)



MODEL 350, 350XL 1-1/4", 1-1/2" & 2" (STANDARD & METRIC)



INDOOR INSTALLATION



OUTDOOR INSTALLATION

SPECIFICATIONS

The Double Check Valve Backflow Preventer shall be Australian Watermark Approved (AZ/NZS 2845.1), rated to 82°C and supplied with male pipe thread tailpieces. The main body shall be Bronze for sizes 3/4" & 1", and Nylon for sizes 1-1/4" to 2". The housing shall be reinforced Nylon and the seat disc elastomers shall be silicone (FDA Approved). The first and second checks shall be accessible for maintenance without removing the device from the line. The Double Check Valve Backflow Preventer shall be a WILKINS Model 350.

WILKINS a Zurn company, 1747 Commerce Way, Paso Robles, CA 93446 Phone:805-238-7100 Fax:805-238-5766

IN CANADA: ZURN INDUSTRIES LIMITED, 3544 Nashua Dr., Mississauga, Ontario L4V 1L2 Phone:905-405-8272 Fax:905-405-1292

Product Support Help Line: 877-BACKFLOW (877-222-5356) • Website: <http://www.zurn.com>