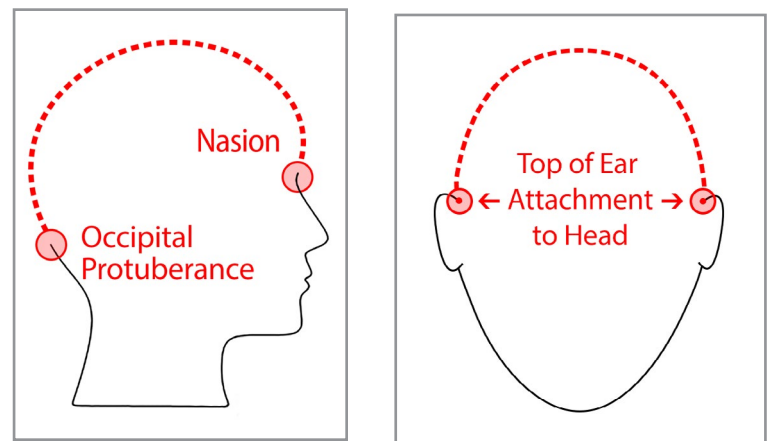


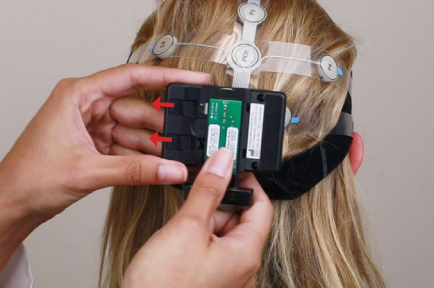
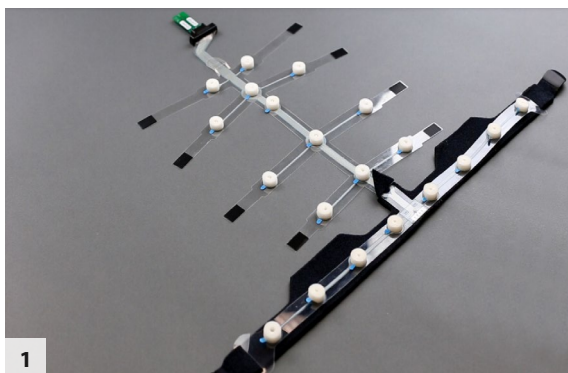
Strip Sizing Chart														XS		Extra Small Strip		M		Medium Strip	
														S		Small Strip		-		Outside ABM Range	
Left to Right Top of Ear Attachment to Head																					
		24.5	25	25.5	26	26.5	27	27.5	28	28.5	29	29.5	30	30.5	31	31.5	32	32.5	33	33.5	34
Nasion to Occipital Protuberance	30.5	XS	XS	XS	XS	XS	XS	XS	XS	XS	XS	XS	-	-	-	-	-	-	-	-	-
	31	XS	XS	XS	XS	XS	XS	XS	XS	XS	XS	XS	-	-	-	-	-	-	-	-	-
	31.5	XS	XS	XS	XS	XS	XS	XS	XS	XS	S	S	S	S	S	S	S	S	-	-	-
	32	XS	XS	XS	XS	XS	XS	XS	XS	XS	S	S	S	S	S	S	S	S	-	-	-
	32.5	XS	XS	XS	XS	XS	XS	S	S	S	S	S	S	S	S	S	S	S	M	M	M
	33	XS	XS	XS	XS	XS	S	S	S	S	S	S	S	S	M	M	M	M	M	M	M
	33.5	XS	XS	XS	XS	S	S	S	S	S	S	S	S	S	M	M	M	M	M	M	M
	34	XS	XS	XS	S	S	S	S	S	S	S	S	S	S	M	M	M	M	M	M	M
	34.5	XS	XS	XS	S	S	S	S	S	S	S	S	M	M	M	M	M	M	M	M	M
	35	XS	XS	XS	S	S	S	S	S	S	S	M	M	M	M	M	M	M	M	M	M
	35.5	XS	XS	XS	S	S	S	S	S	S	S	M	M	M	M	M	M	M	M	M	M
	36	XS	XS	S	S	S	S	S	S	S	M	M	M	M	M	M	M	M	M	M	M
36.5	-	S	S	S	S	S	S	S	S	M	M	M	M	M	M	M	M	M	M	M	
37	-	-	-	S	S	S	S	S	S	M	M	M	M	M	M	M	M	M	M	M	
37.5	-	-	-	S	S	S	S	S	S	M	M	M	M	M	M	M	M	M	M	M	

Also measure circumference. Downsize if:

- circumference measures < 56cm, use Small Strip.
- circumference measures < 52cm, use XSmall Strip.



The Nasion is located at the intersection of the bridge of the nose, and just above the eyebrows. The Occipital Protuberance is located below the horizontal midline of the skull at the protruding bump. The Left/ Right Top of Ear Attachment is located where the ear and head intersect.



8

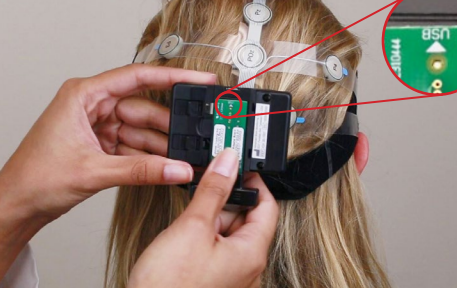

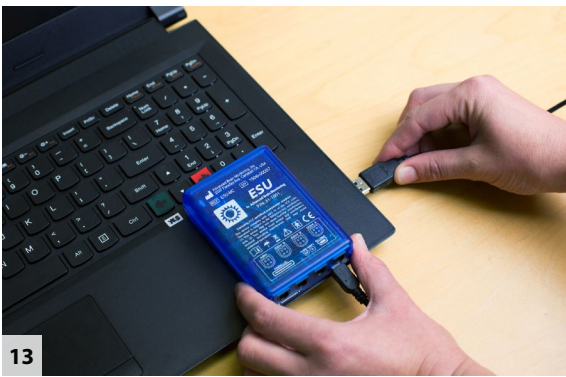


Figure 10 shows a hand adjusting the electrode placement on a participant's head. The device is a black EEG cap with a central module labeled 'P' and '100 Hz'. The cap is secured with white straps. The hand is positioned to adjust the cap's fit, with red arrows indicating the adjustment points.



Pg 1 of 2





Attach the Bluetooth Receiver (ESU) to the USB port on the computer.



Turn on the Headset. Allow Headset and Receiver to pair, as indicated by a solid light on both devices.



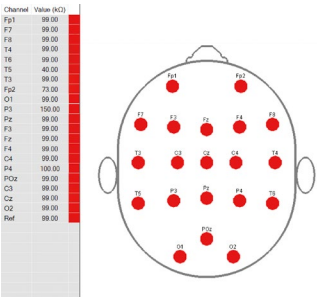
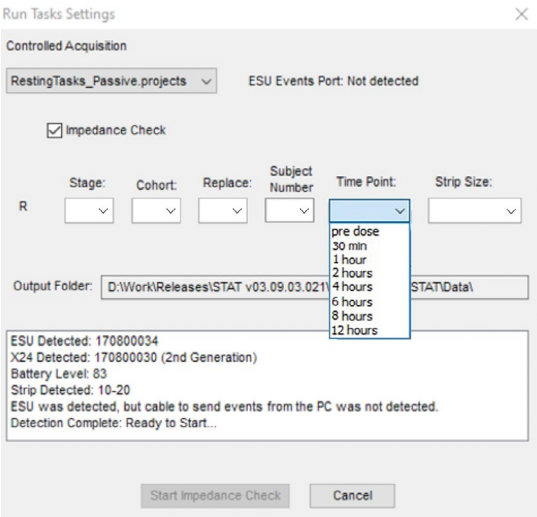
Double-click the STAT icon to open software. Enter your Username and Password. Select your Tech ID for the appropriate Study Site and click “OK”.

Initiation

- Click the “Run Tasks” button. Enter the session information and click “Start Impedance Check”.
- Instruct the participant to relax, blink normally, avoid excessive blinking, remain silent and avoid jaw clenching.

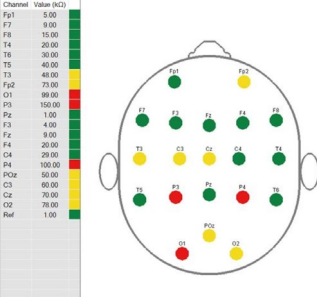
Impedance Check

- A window will appear with a surface map and channel list. Ask the subject to remain still.
- A display of the impedance values will appear and indicate which sensor sites you will need to adjust to decrease impedance values.
- Reference impedances** will be measured at the **mastoid sites**.



High reference values will be shown as “OUT OF RANGE”. If reference values are high, all other values will be inaccurate. To troubleshoot:

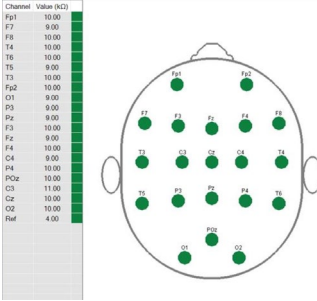
- Firmly press down on the mastoid electrodes; you may even adjust the mastoid lead cable position.
- If values are still high after re-testing, remove the mastoid electrodes, wipe behind the ears with an alcohol swab, and re-apply (you may need to cut new mastoid electrodes if the adhesive has worn).



If any site is presenting high (red or yellow) impedances:

- Un-Velcro the corresponding strip arm. Part the patient’s hair at the sensor site and add more cream to the scalp and sensor.
- You may have to re-wipe the site area on the scalp with an alcohol swab and re-apply more cream depending on the circumstance.

Impedance Value	Comments
< 40 kΩ	Good
40 kΩ - 80 kΩ	Moderate
> 80 kΩ	Bad
> 250 kΩ	OUT OF RANGE



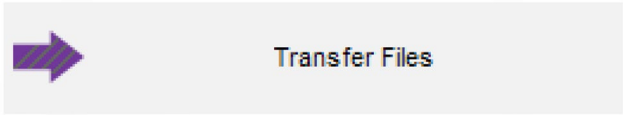
- Troubleshoot each channel marked yellow or red: Re-run the impedance test by clicking the start button to view the new values. Repeat these directions as necessary (when all impedances fall within the green values, including the reference, you may continue with other tasks).

Run Tasks

- Inform the participant that they will be performing several tasks including resting state acquisition with eyes open and closed. The tasks will begin automatically with display of instructions for each task.
- If the session fails, “CTRL + ALT + R” can be used to restart the session.
- At the conclusion of the session, a Session Report will be presented. You may choose to:
  - Proceed if the quality check is good.
  - Repeat tasks that failed the quality check. To repeat marginal tasks, the appropriate box must be checked.
  - Conduct an impedance check by checking the appropriate box.
  - Provide Tech Notes to communicate any problematic session information.Then click “OK”.

Transfer Files

- Once the session has been completed, click “Transfer Files” to upload all pending files to the Gateway Portal.



Caring for Equipment

- Refer to the X-Series Hardware User Manual for instructions on cleaning and proper maintenance of the equipment.
- Always store strips in a flat position and handle with care to prevent creasing and/or folding.
- Dispose of the single use strip and neoprene head strap according to local ordinances.
- To charge your Headset, plug the provided micro USB cable into the bottom of the Headset. The Headset will tell you it is charging and the green LED indicates charging status as follows: the light blinks double while charging and single when the Headset is fully charged. The Headset will tell you when charging is complete.