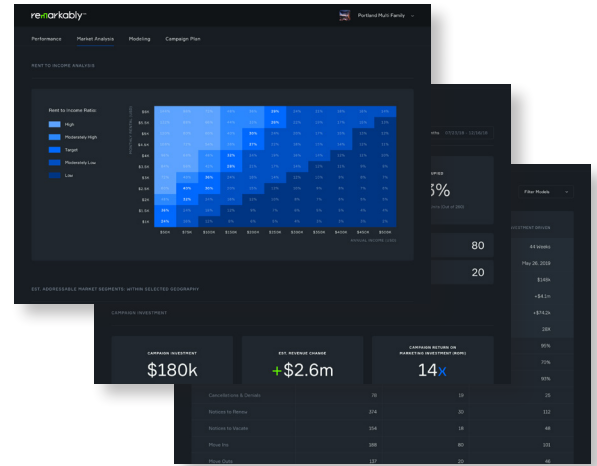




Plan Package: Multifamily marketing analytics software to plan the perfect lease-up



	Plan	Accelerate	Optimize
Solution Package	Exclusively for clients with ground-up projects in early stages who anticipate beginning pre-leasing in the next 12-24 months	Ideal for new assets in lease-up or existing underperforming or repositioned assets with occupancy rates lower than 85% who seek to reach stabilization (90%+)	Ideal for assets and portfolios with 85% or higher occupancy rate who seek to achieve and maintain stabilization (90%+)
Set Up			
Asset Onboarding	✓	✓	✓
Baseline Report	—	✓	✓
Data & Insights			
Total Addressable Market Analysis (TAM)	✓	✓	—
Campaign Modeling Development	✓	✓	—
Campaign Plan Development	✓	✓	—
Campaign Analytics Consulting Support	✓	✓	✓
Campaign Performance Reporting	—	✓	✓



Available Now

Asset Onboarding & Team Setup

Full-service data entry and platform integration with lightweight user training ensures a fast and easy onboarding process. Baseline reports give you a clear, actionable starting point.

Coherent Data & Actionable Insights

Total addressable market analysis and campaign models provide coherent views into your most likely prospective renters within selected geographies and deadline- and investment-driven campaign performance scenarios. A mix of software and analyst support helps ensure you stay on track.

Recommended Actions & Measurable Results

Improve marketing and leasing success with recommended actions and real results. We will create plans and implement tactics to manage risks, seize key opportunities, and hit goals.

Coming Soon

- Leading CRM and Property Management platform integrations (Yardi, RealPage, Entrata, ResMan, MRI, AMSI)
- Automated, integrated insights and recommended actions
- Automated, integrated search advertising (Google)
- Automated, integrated social advertising (Facebook, Instagram)
- Automated, integrated ILS advertising (RentPath, CoStar Group, Apartment List, Craigslist, Zillow)

Contact us for pricing information or a demo at

hello@remarkably.io or +1 800 266 9255

Company Overview

Remarkably is a multifamily marketing data, analytics, and insights company, powered by a proprietary SaaS platform. We are passionate about helping the nation's top property owners, investors, developers, and managers reach their leasing, occupancy, and revenue goals for ground-up developments and existing assets, while driving significant, measurable, and market-beating performance and value.