

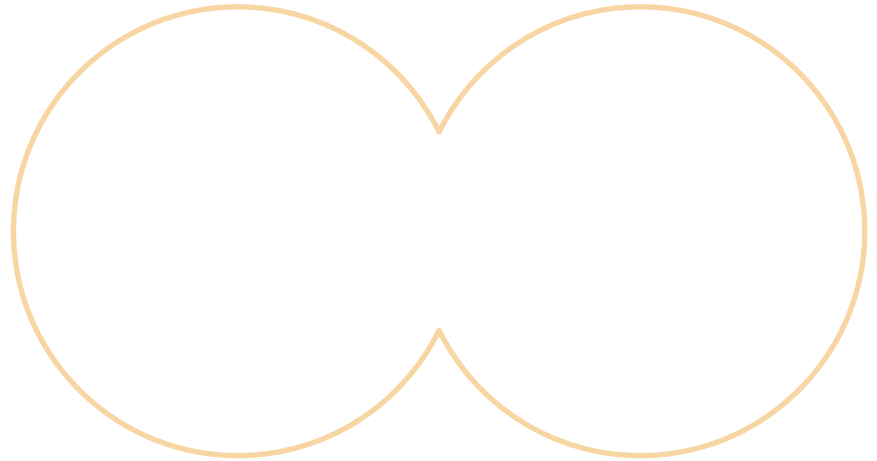
# Perspective Goggles Activity

In each scenario below, Sid is unable to do many of his 'normal' activities. In the perspective goggles provided (which you can draw on your own paper if you don't have a printer), draw or write what Sid can do in each situation. This will help remind Sid what we have control over.

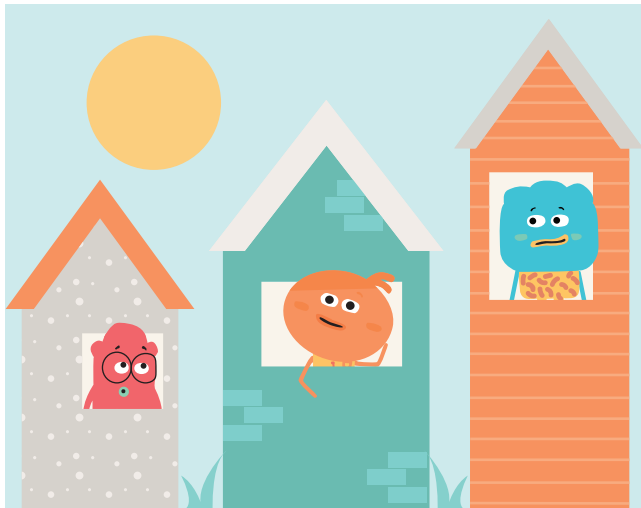
Scenario 1: Sid can't go to school



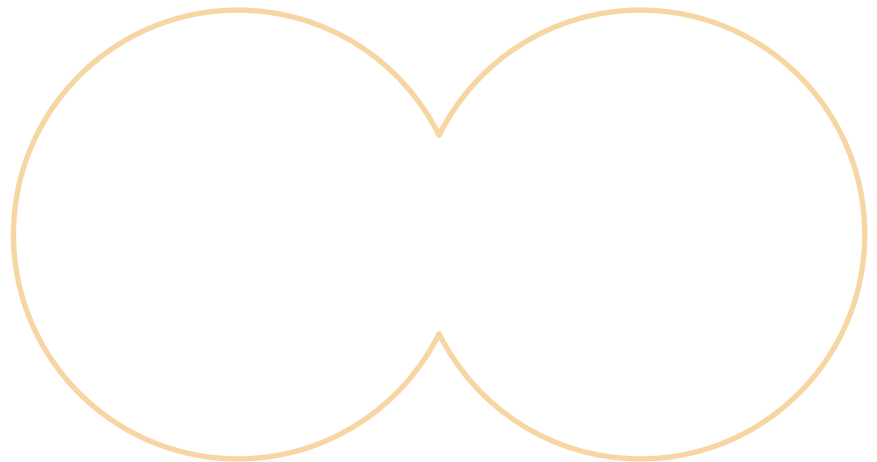
Sid can:



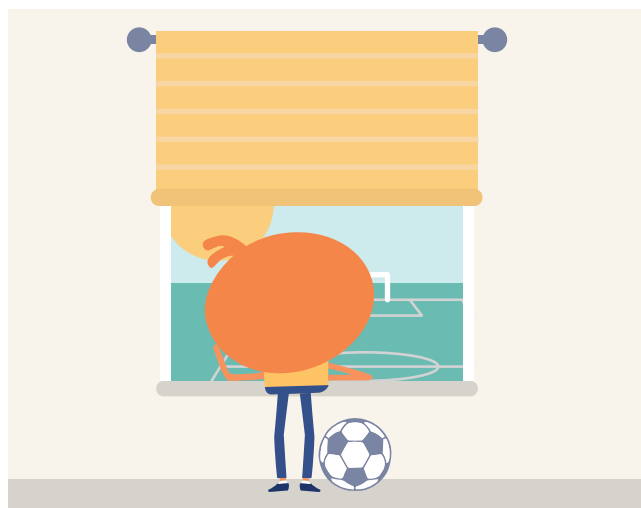
Scenario 2: Sid can't visit friends



Sid can:



Scenario 3: Sid can't play soccer



Sid can:

