

Two eggplants are shown against a teal background. One eggplant is positioned vertically on the left side, and the other is positioned horizontally on the right side. Both eggplants are dark purple with green stems and calyxes.

food for work / life balance

WORK / LIFE DELI

LDL



WORK / LIFE DELI

# Midori

### **Food for work / life balance**

Midori is a new style of deli bringing balanced food to your office and home.

We cater you wild natural food, seasonal & pure, all made to share.

Everything is created in-house the menu is ever changing with what inspires us at the market playing with international flavors.

### **Catering for your business moment**

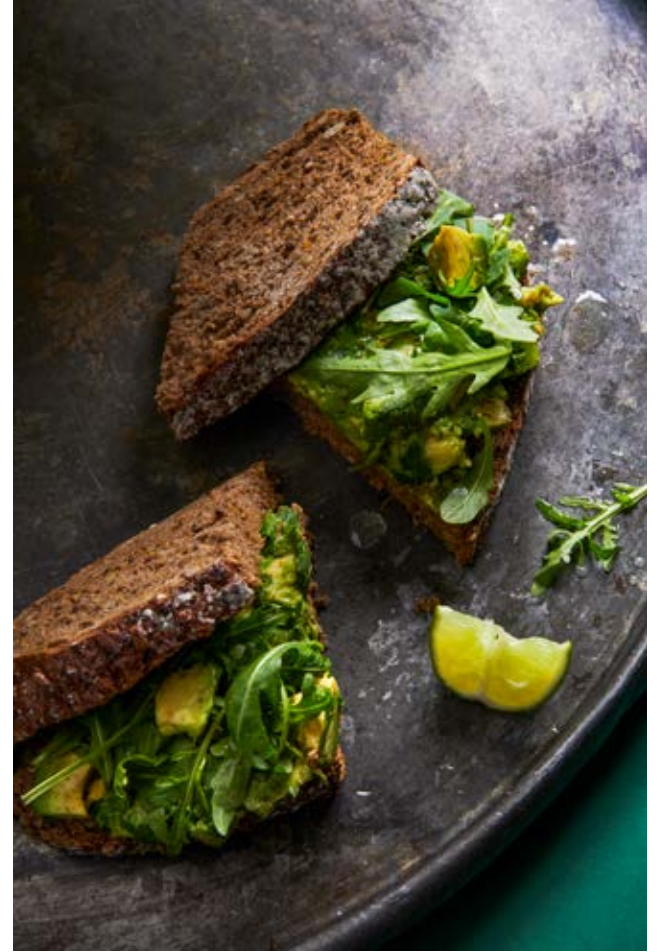

Besides our restaurants (former Coffeelabs) and our in-house catering/event service, Midori also focuses on convenient take-out & delivery for external gatherings & events.

Breakfast meetings  
Team lunches  
Afterwork meet-ups  
Press days & seminars  
Private dinners w. friends/family

We fit pure food and convenience right into your daily work/life schedule and make sure you keep going.



# morning



## morning

### quick start

9,5 pp

juice of the day 25cl  
granola bowl, yogurt & fruits

### full kick start

12,5 pp

juice of the day 25cl  
granola bowl, yogurt & fruits  
toast avocado, sea salt & lime

### + bakery item of the day

3,5 pp

cinnamon roll, oats bar, muffin, ...

# need a break



## need a break

### cake mix

selection of cakes & cookies

3,5 pp

triple chocolate brownie  
apple cinnamon cake  
salted macadamia cookies

### juice boost

selection of freshly squeezed juices

4 pp

carrot apple ginger  
orange berries banana  
apple cucumber celery

### salty bite

selection of dips

4,5 pp

avocado mash w. hemp seeds  
lebanese za'atar hummus  
served w. raw veggies & breads

### chef's mezze

selection of 2 dips w. crackers & 2 bites

11,5 pp

avocado mash w. hemp seeds  
lebanese za'atar hummus  
veggie falafel w. minty greek yogurt  
crispy chicken w. harissa mayo

### fresh seasonal fruits bowl

selection of fresh seasonal fruits

5 pp

## sharing lunch

### tartines mix

12,5 pp

a variety of tartines, veg. & non veg. options

— Sample menu —

toast crushed avocado, spices, lime, pumpkin seeds

naan hummus, grilled veggies, marinated feta, hemp seeds

bun w. crispy chicken, israeli salad, arugula, harissa

### + mixed seasonal salad bowl

4,5 pp

### midori's balanced mix

18,5 pp

share 2 mains, 4 sides, dip & bread

— Sample menu —

sesame crusted chicken  
zucchini & feta 'burgers'

eggplant w. miso, pistachio  
roasted beets w. toasted quinoa, ginger  
grain bowl w. avocado, braised greens, dashi  
fresh arugula, chicory, radicchio salad  
naan bread w/ seasonal hummus

### + soup

3,5 / 4,5 pp

### + cake mix

3,5 pp

### + iced tea / juice

4 pp

### + fresh seasonal fruits

5 pp



# ju n i

## sharing dinner

### signature dinner

28,5 pp

share trio of dips, 2 bites,  
2 mains, 1 pasta, 4 sides

— Sample menu —

hummus, guacamole & seasonal dip  
w. raw veggies & seasalt cracker

crispy chicken w. harissa mayo  
fresh pea, mint & coconut soup

marinated beef w. basil, parmesan  
roasted salmon w. dill, lime  
ravioli ricotta & spinach w. pumpkin seeds

fennel, cucumber, rucola, daikon salad  
roasted vegetables w. flat-leaf parsley, sumac  
sweet potato wedges w. harissa mayo  
fresh taboulé w. bell pepper, cucumber, mint

+ **soup** 3,5 / 4,5 pp

+ **cake mix** 3,5 pp

+ **iced tea / lemonades** 3,5 / 5 pp

+ **fresh seasonal fruits** 5 pp

# dinner





# drinks

## drinks

**iced tea / lemonade** 3,5 pp

lemon & ginger iced tea  
sparkling pomegranate lemonade

**iced tea / juice** 4,0 pp

lemon & ginger iced tea  
apple carrot beetroot ginger  
strawberry orange banana

**bottle organic white wine** 14,5 pp

**bottle organic red wine** 14,5 pp



## terms & conditions



### Order

Please order 24h in advance, by email: [hungry@midori.eu](mailto:hungry@midori.eu) or through our website. However, we will do our best to fulfill your last minute request.

### Minimum order

The minimum order for our sharing packages is 4pax. For smaller orders, choose à la carte or via deliveroo, ubereats or takeaway.

### Menu

Please note above menus are samples and change on a weekly basis to keep you inspired.

### Allergies / Dietary requirements

If you have any allergies or dietary requirements, please do inform us.

### Your order / Packaging

We serve everything in takeaway packaging, ready for pick up in one of our locations : [midori.eu](http://midori.eu)

Reheating and serving instructions will accompany the food if necessary. Packaging is microwave/oven proof, when lids are removed.

### Extra services / Delivery

E-bike or local taxi delivery is possible. Please allow us a time slot of 30 minutes.

Postal codes Antwerp:  
2000, 2018, 2020, 2060, 2140, 2600 : €15  
—free delivery above € 150  
2100, 2610, 2650 : € 25  
—free delivery above € 250

Postal codes Brussels:  
1000, 1030, 1040, 1050, 1060, 1140,  
1150, 1160, 1170, 1180, 1190, 1200, 1210  
1620 : € 15  
—free delivery above € 250  
1020, 1070, 1080, 1081, 1082, 1083, 1090,  
1120, 1780 : 25 €  
—free delivery above € 350

If your address is outside our delivery zone, we'd be happy to discuss possibilities.

### Extra services/porcelain serving bowls.

To assure you minimum prep time & max convenience, we can cater everything in our porcelain bowls.  
+ 10% of f&b price with a max of 100 €  
+ extra pickup of goods if necessary

Please sign our warranty document for damage/loss.

### Catering on location / special occasions

The above offering is pick-up/drop off only and can be seen as starting point. If you request extra services for larger events or catering for special occasions please get in touch for more information.

### Price / pay

All prices mentioned are exclusive of 6% VAT and 21% VAT for extra services. If you require an invoice, send us your details.

### Regular orders

Receive a discount for repeated orders.

### Orders cancellation policy/order changes

We charge 50% for cancellations within 24h of your scheduled pick-up/delivery time.

### Contact

[www.midori.eu](http://www.midori.eu)  
[hungry@midori.eu](mailto:hungry@midori.eu)  
Antwerp - Brussels