



**Smart  
Chef**

Simple online recipe and menu management app to provide accurate and live cost, nutrition and allergen data for all your recipes.



# Smart Chef: About Us

---



INDUSTRY

**Food & Beverages**



HEADQUARTERS

**Northamptonshire, England**



BUSINESS ESTABLISHED

**September, 2002**



WEBSITE

**[www.ntassure.com](http://www.ntassure.com)**



IMPLEMENTATION PARTNERS

**Dinepilot Limited**



COMPATIBLE APPLICATIONS

**Smart Supplier, Smart Menu, Dinepilot**

## THE SMART CHEF MISSION

Reducing risk in kitchens by providing chefs with accurate, live and compliant information on the dishes you're serving your customers.



## THE RESULT

Smart Chef creates an end to end solution for menu information with an online digital portal, providing an intuitive solution for chefs to generate cost, ingredient, claims, allergen and nutritional profiles for every dish.

These dish profiles can be deployed at the point of sale through our Smart Menu tablet application, giving you an end to end solution to providing accurate and up to date allergen and nutritional information to your customers.

Clients can manage multiple brand menu cycles, without resource heavy spreadsheets and manual manipulation leading to costly errors.

The automated cookbook creation process and feed into stock systems from approved recipes and menus will ensure consistency of data from Food Development Chefs to the individual units delivering the finished dishes.

**140M**

Informed meal choices  
each year via Smart  
Chef

**1000+**

Live Menus

**4700+**

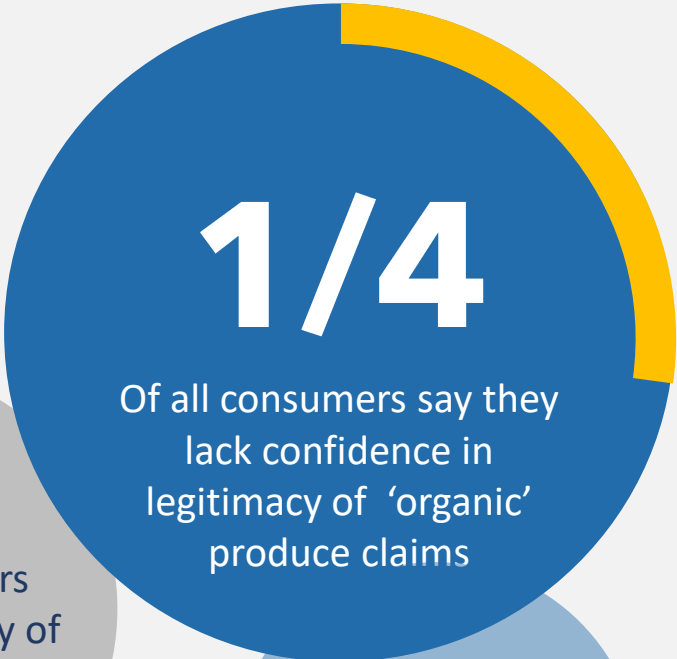
UK Restaurants and  
Counting

**44,000**

Live Recipes



# High Level Impact



Full compliance with food information regulations ahead of time



**Smart  
Chef**

Chat to one of our food safety consultants now to find a Smart solution for your business.

Tel: 01933 272089

Email: [info@ntassure.com](mailto:info@ntassure.com)