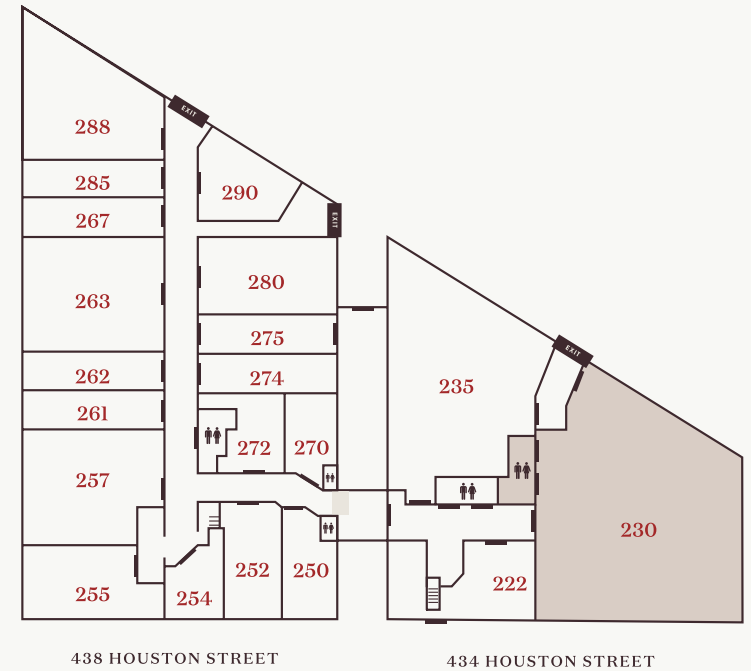




## SUITE 230

6,870 SQ FT | PRIME HISTORIC OFFICE SPACE



FOR MORE INFORMATION:

**GORDON GILBREATH**  
[gordon@houstonstationnashville.com](mailto:gordon@houstonstationnashville.com)  
615-504-7406

- \$38.50/sqft plus 10% CAM
- Utilities by Tenant
- \$45/sqft TIA provided by Landlord for 5 Year Lease
- Dramatic space, high ceilings, post & beam, brick and hardwood, great acoustics, train view
- This space will be terrific creative music/office space, best suited for mostly open floor plan



