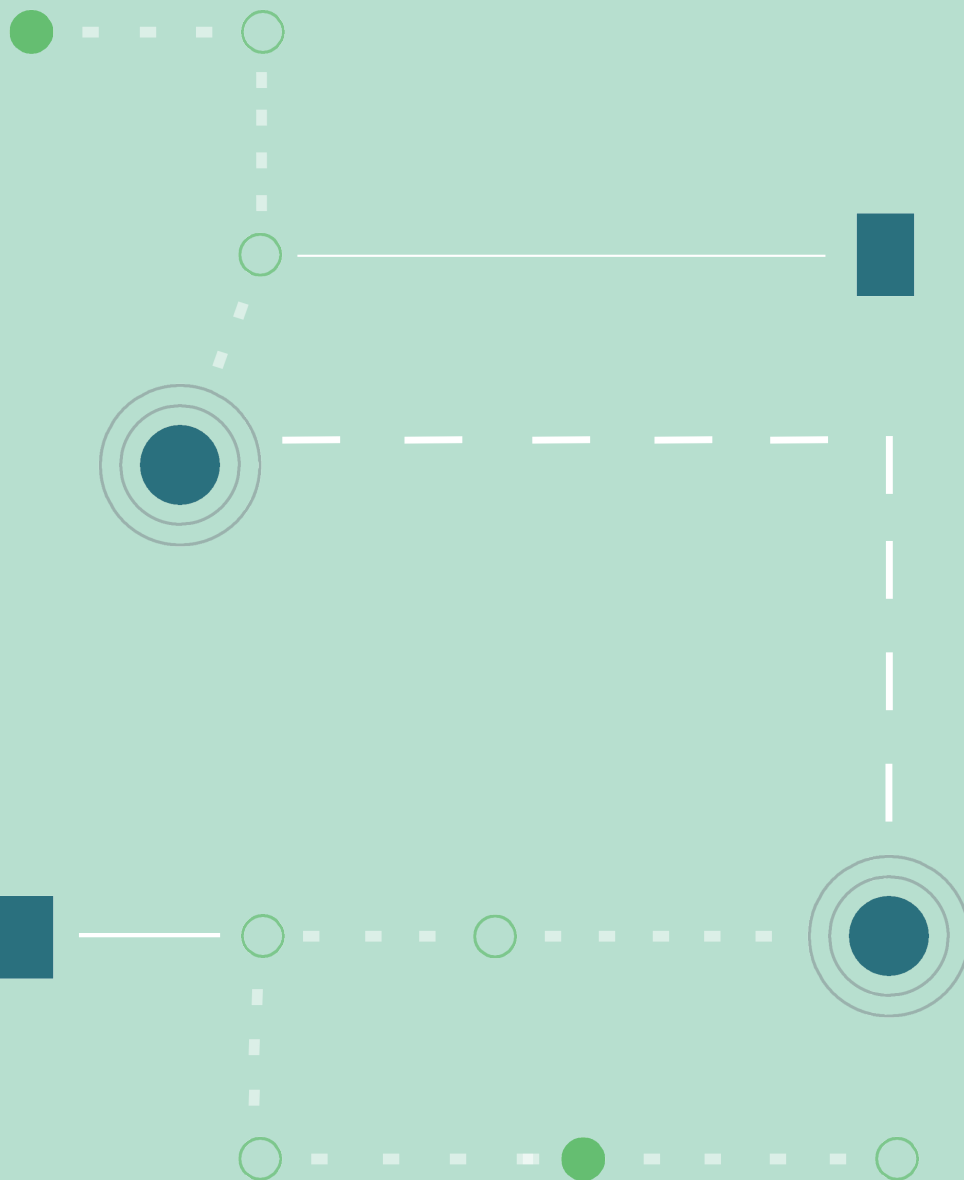




THE BRIDGE CHURCH

HEALTH AND SAFETY

Procedures



FACILITY & WORSHIP GATHERING

Protocols



1

Increased cleaning of the facility with particular focus on high touch and high traffic areas.

2

Signage in the facility to guide congregation expectations.

3

Provide hand sanitation stations for volunteers and attendees upon entry and throughout the facility.

4

Promote and practice safety procedures for volunteers and attendees.

5

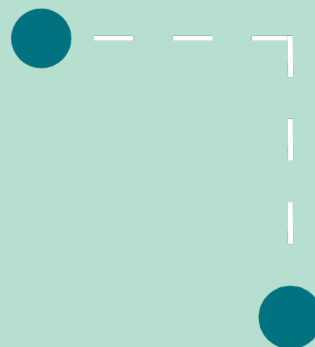
Implement new safety procedures throughout all worship gathering elements.

6

Regularly adjust safety requirements in worship gatherings. Including masks, seating, and configuration.



EMPLOYEE & VOLUNTEER *Expectations*

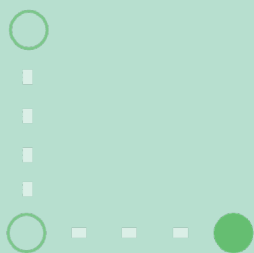


All employees and volunteers must self screen using basic CDC recommended questions prior to entering the facility.

All employees and volunteers must wear masks or similar cloth face coverings or similar cloth face coverings per CDC recommendations, until notified otherwise

All employees and volunteers must wash or sanitize hands before entering the facility.

All employees and volunteers must practice social distancing (this means no high-fives, hugs, holy kisses, etc).



LET'S DO THIS TOGETHER

How can we work together?

1. Honor leadership by following the guidelines and procedures required by The Bridge Church

2. Honor one another.

Honor one another by truly self screening. If you experience with any of the following symptoms, we ask that you stay home:

- Cough
- Shortness of breath or difficulty breathing
- Chills or repeated shaking with chills
- Muscle pain
- Headache
- Sore throat
- Loss of taste or smell
- Diarrhea
- Fatigue
- Nausea or Vomiting
- Congestion or Running Nose
- Feeling feverish or a measured temperature greater than or equal to 100.0 degrees Fahrenheit.

If you have tested positive for COVID-19 **OR** if you have been identified as a close contact of someone who is confirmed positive, it is recommended that you quarantine for 14 days from the onset of symptoms or contact. We ask that you follow this recommendation and wait to gather with us in person.



CURRENT REGATHERING STAGE: *Stage 3*

Stage 1

- Online Worship Experience Only.

Stage 2

- Online Worship Experiences at **9:00am** & **11:00am**.
- In-person invitations to specific leadership that help catalyze the church.
- No Bridge Kids on site (children ages 5th grade and up are welcome to join).
- **Masks are required** upon entry. Masks may only be removed for taking of communion elements or when otherwise required for medical reasons.
- Capacity for each gathering will be **30 guests** (excluding band and production teams).
- In-person check in includes: Temperature checks, hand sanitizing, and passing out mask (as needed).
- Registration Required.

Stage 3

- Online Worship Experiences at **9:00am** & **11:00am**.
- In-person invitations to Bridge Church Covenant Members.
- Bridge Kids at limited capacity for 9:00am Worship Gathering only.
- **Masks are required** upon entry. Masks may only be removed for taking of communion elements or when otherwise required for medical reasons.
- Capacity for each gathering will be **50 guests** (excluding band and production teams).
- In-person check in includes: Temperature Checks, hand sanitizing, and passing out mask (as needed).
- Registration Required.

