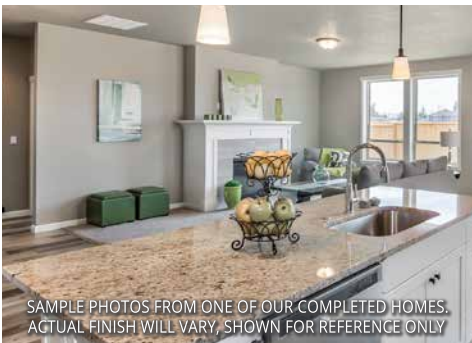




THE ARTIST RENDERING IS A PRELIMINARY ILLUSTRATION. ACTUAL FINISH AND TRIM WILL VARY, SHOWN FOR REFERENCE ONLY

3 Bed | 2 Bath | 1870 SF | 2 Car Garage
LOT 11 | 1624 NE 17th Ave Canby 97013 | \$454,900



SAMPLE PHOTOS FROM ONE OF OUR COMPLETED HOMES. ACTUAL FINISH WILL VARY, SHOWN FOR REFERENCE ONLY



SAMPLE PHOTOS FROM ONE OF OUR COMPLETED HOMES. ACTUAL FINISH WILL VARY, SHOWN FOR REFERENCE ONLY



SAMPLE PHOTOS FROM ONE OF OUR COMPLETED HOMES. ACTUAL FINISH WILL VARY, SHOWN FOR REFERENCE ONLY

Welcome to your dream home. Healthy, energy efficient Stafford homes are designed with the buyer in mind. This home has fine craftsmanship details, is **built-above-code** industry construction standards, and full of **energy-efficient** appliances to save the residents money monthly with **extremely low utilities cost**. All Stafford homes are **move-in ready**, as well as safe for the family by using certified building materials for industry health standards. Come see one for yourself and fall in love with your new-home today!

What Sets a Stafford Home Apart? These Features are Stafford Standard, Plus Many More We Couldn't Fit on the List!

- EPS **Energy Star**® certified with efficiency scoring (see back)
- Certified **Energy Star**® for most appliances and fixtures
- Self-closing drawers and cabinets in kitchen
- Tile backsplashes with multiple outlets in kitchen
- Quartz slab counters in kitchen (model dependant)
- Gas fire place & 96% high-efficiency furnace
- Glass shower enclosure in master
- Advanced durable laminate wood flooring
- Certified **Green Label**® carpet for low emissions
- Coated garage floors
- Low maintenance front landscaping
- Water saving timer controlled sprinkler system in front
- Solar-panel ready (no actual solar panel included)
- Blown-in insulation for great temperature stability

ALL HOME DETAILS, SPECIFICATIONS, FINISHES, PRICING AND MATERIALS ARE SUBJECT TO CHANGE & BASED ON MODEL/PLAN & STYLE OF THE HOME. RENDERINGS AND PHOTOS MAY BE OF SIMILAR HOMES CCB 204299

CALL TODAY FOR A TOUR 503.793.4336 **New Home Realty**

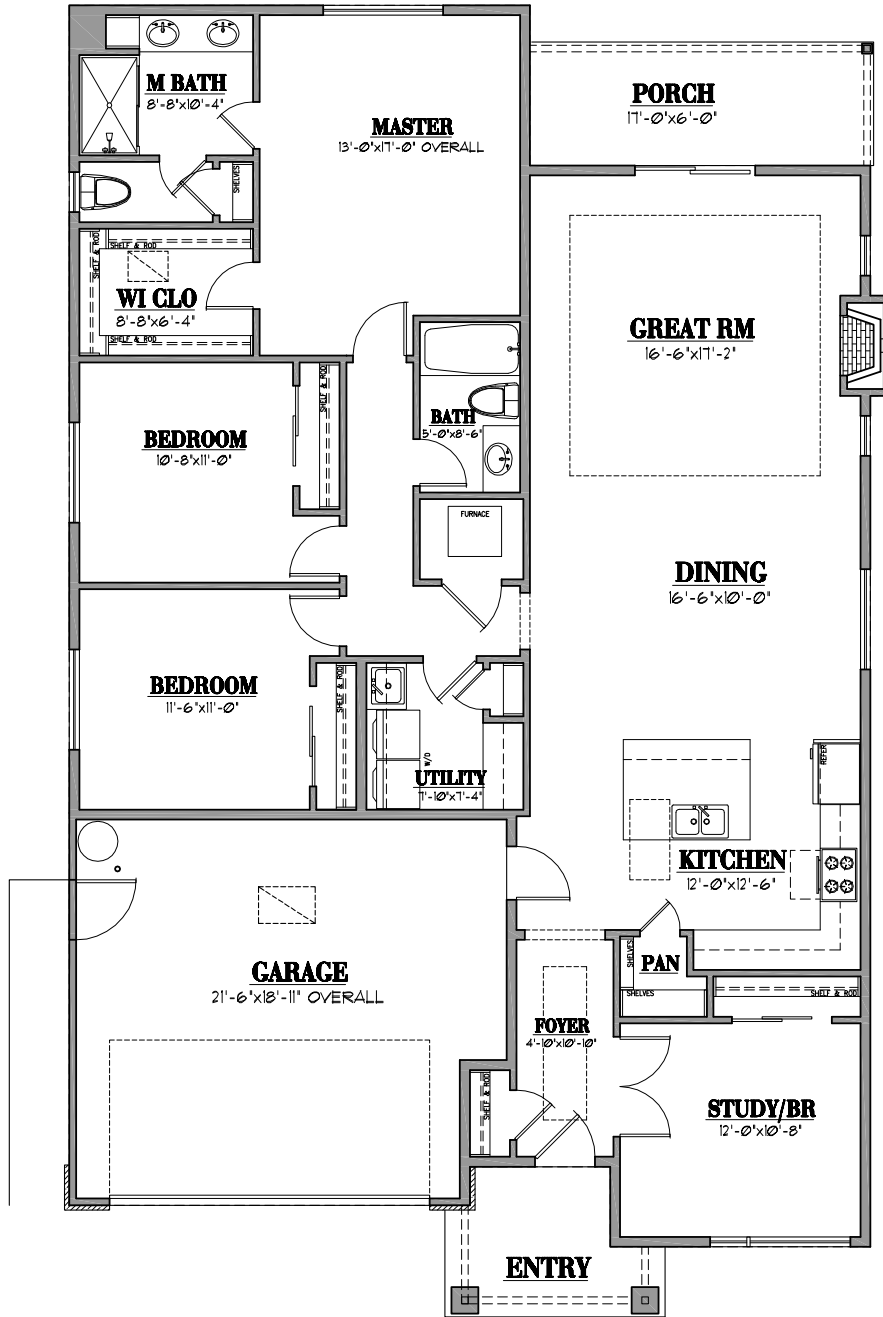
Open houses most weekends in one of our communities, to find out when the next one is scheduled please call!

EXCLUSIVELY MARKETED BY **AIRIKA WAIBLE** | PRINCIPAL BROKER | LICENSED IN OREGON

AIRIKA@NEWHOMEREALTY.COM | NEWHOMEREALTY.COM | 8820 SW HOLLY LN WILSONVILLE OREGON 97070



THIS HOMES FLOORPLANS



SAVE \$ WITH THIS HOME
MONTHLY UTILITIES COST



**UNDER
\$100/MONTH**

ELECTRIC/NATURAL GAS/HEAT

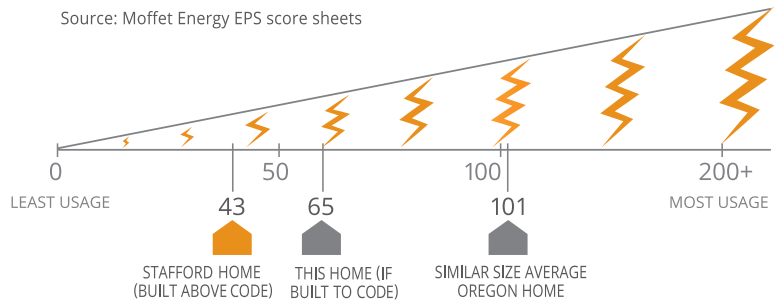
AVE COST ELECTRIC
\$80 UNDER

AVE COST GAS
\$20 UNDER

Source: Moffet Energy EPS score sheets. Actual utilities cost will fluctuate depending on owner monthly usage. This cost is an estimate only.

HERE'S HOW YOU SAVE ENERGY

Source: Moffet Energy EPS score sheets



STAFFORD HOMES ARE BUILT ABOVE CODE | FIND OUT MORE ABOUT OUR HOMES & OTHER COMMUNITIES | STAFFORDHOMESANDLAND.COM

Specifications, pricing, finish and designs subject to change without notice. Features, trim, details and elevations will vary from artist rendering and marketing plan. Materials subject to market fluctuations, supplier availability and product cycles; which may require substitution of equal to or better than items solely at the discretion of the builder.