



ENERGY STAR



**STAFFORD**  
HOMES & LAND

The artist rendering is a preliminary illustration. Actual finish and trim will vary, shown for reference only.

Boones Crossing

## 1234 Daylily St. \$379,900

3 Bed, 2.5 Bath, 2248 sf, 2-car garage, Bonus room

This spacious 2-story craftsman home has a great floor plan with den/flex and bonus rooms, amenities and storage galore. Granite kitchen counters with full back splashes and island. Covered entry and back patio. Smart flooring selections in hardwood plank, Green Label® certified carpet and designer vinyls. Tray ceiling accent in the master. Stainless finish appliances, tile-faced gas fire place. Landscaped front yard, fenced + gated back. **Energy Star®** certified.

**Features include:** EPS energy efficiency scoring, Epoxy-coated garage floor, Glass shower enclosure in master, Gas fire place, 96% High-efficiency furnace, EPA Air-Plus® certified, Soaker tub, Front yard irrigation system with timer, Solar-ready panel.

3 Bed 2.5 Bath, 2248 sf, 2-car Gar. Lot 102 / Prop Type: Detached / ML# 19677966 / Heritage Elem / Valor Mid / Woodburn HS / BI-MICO / DW / DISP / GAS-RNG / SSAPPL / 96+ GAS-FOR-AIR / GAS-FPLC / LAM-FL / VINYL-FL / WW-CARP / COV-ENTRY  
1234 Daylily St. Woodburn, OR 97071



Sample photo from one of our completed homes. Actual finish will vary, shown for reference only.



For project updates, photos & more:

Scan this code

Visit [NewHomeRealty.com](http://NewHomeRealty.com) for a selection of new home listings

# Call 503.793.4336

Airika @ [NewHomeRealty.com](http://NewHomeRealty.com)



Exclusively marketed by New Home Realty  
**Airika Waible**, Principal Broker  
Licensed in Oregon

[www.newhomerealty.com](http://www.newhomerealty.com)

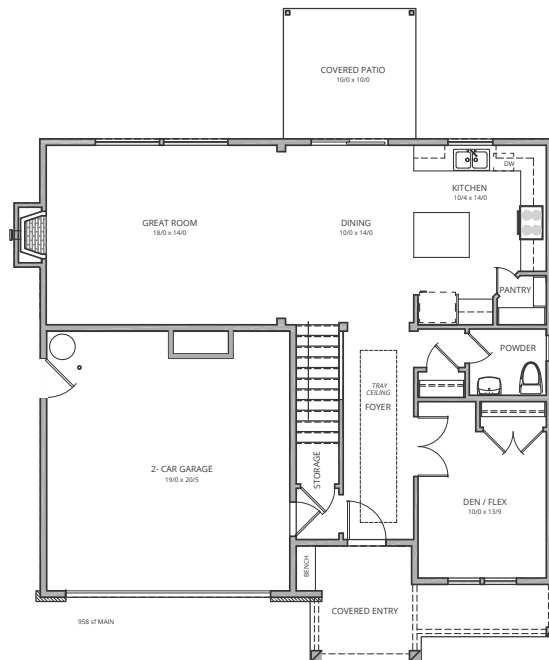
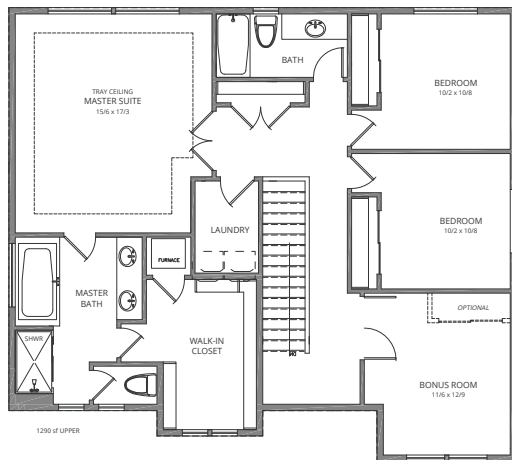


# Boones Crossing

**Boones Crossing | Lot 102 Floor plan**  
 3 Bed, 2.5 Bath, 2248 sf, 2-car garage, Bonus room



Lot 102 - elevation / floor plan drawings



**EPS™ IS AN ENERGY PERFORMANCE SCORE THIS HOME:**

Estimated average energy cost per month: Electric \$62, Natural Gas \$17 (Estimated Energy Cost calculated using \$0.11 per kWh and \$0.91 per therm)

**ENERGY-EFFICIENT FEATURES** that contribute to this home's score:

- Insulated Ceiling: R-60 Efficient Windows: U-0.3 Space Heating: 96.0 % AFUE Furnace
- Insulated Walls: R-23 Efficient Lighting: Envelope Tightness: 3.0 ACH @ 50Pa
- Insulated Floors: R-30 Water Heater: Heat Pump 3.2EF:



Stafford Homes and Land | Crafting Elegantly Efficient Homes



staffordhomesandland.com



Specifications, pricing, finish and designs subject to change without notice. Features, trim, details and elevations will vary from artist rendering and marketing plan. Materials subject to market fluctuations, supplier availability and product cycles; which may require substitution of equal to or better than items solely at the discretion of the builder. REV. 07/10/2019