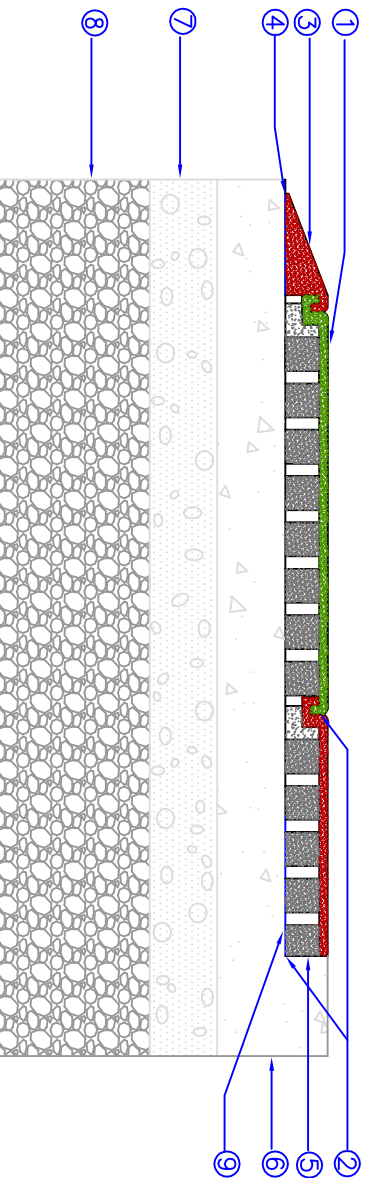




DuraSAFE Series

DuraSAFE contained by a Ramp



LEGEND:

- ① DuraSAFE[®] tile (See Specifications for Depth and Color).
- ② 1/2" Diameter Continuous Bead of DuraSAFE Adhesive at Each KrosLOCK Joint.
- ③ SoRRAMP (ADA) or Standard SoRRAMP Jr (See Specifications for Details).
- ④ Apply DuraSAFE Adhesive to Entire Bottom Edge and locking joint of SoRRAMP.
- ⑤ Cut off "Lock" at any Retainer. Use Adhesive on the Retainer, and Under First 12" (300mm).
- ⑥ Concrete or Asphalt Base and Curb (See Specifications for Depth and Details).
- ⑦ Compacted Granular A Type I
- ⑧ Compacted Subgrade.
- ⑨ 1.0% Slope – 1/8" / 12" (3mm / 300mm).

NOTES:

1. Consult with a local Civil Engineer to find out what drainage system is best for your application.
2. Ensure subsoil drains towards drainage system.
3. Review Most Recent Installation Manual and Sub Surface Guide

| DuraSAFE Thickness | Critical Fall Height (FT) | FILE NAME | DuraSAFE contained by ramp | | PREPARED BY | B. GOSS |
|--------------------|---------------------------|-----------|----------------------------|------------|-------------|---------|
| 2.00" | 3' | REV | DESCRIPTION | DATE | | |
| 2.25" | 4' | 0 | ORIGINAL ISSUE | 08/16/2016 | | |
| 2.75" | 5' | | | | | |
| 3.25" | 6' | | | | | |
| 3.75" | 7' | | | | | |
| 4.25" | 8' | | | | | |
| 4.75" | 9' | | | | | |
| 5.00" | 10' | SIZE | SCALE | DWG NO. | | REV |
| 5.25" | 12' | A | N/A | 2017-024 | | 1 |



4393 DISCOVERY LINE
 PETROLIA, ONTARIO
 NON TPO
 PHONE: (800) 263-2363
 PHONE: (519) 882-8799
 FAX: (519) 882-2697
 EMAIL: info@softsurfaces.com