

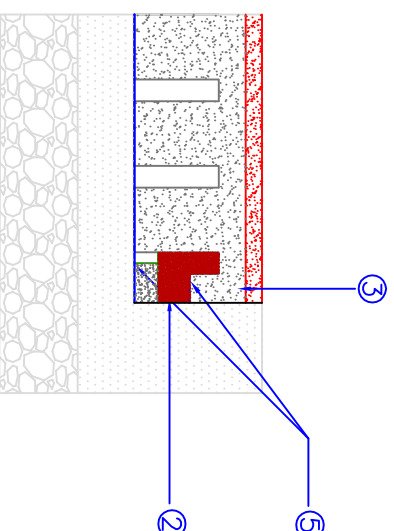
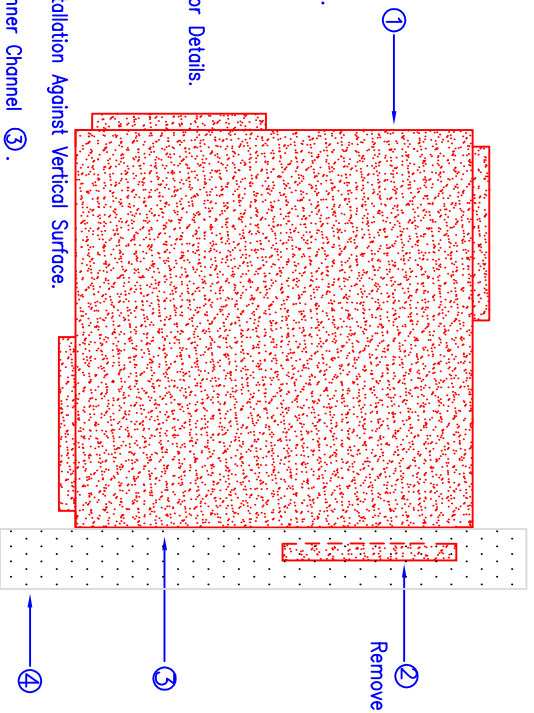


# DuraSAFE Series

Full Tile Against a Vertical Surface



- LEGEND:**
- ① DuraSAFE® tile (See Specifications for Thickness and Color).
  - ② Outer Channel.
  - ③ Inner Channel.
  - ④ Vertical Surface (Curb, Wall or Timber) See Specifications for Details.
  - ⑤ Applied Adhesive (See Installation Instructions Below).



## SECTION

Shows Outer Channel Inserted  
Underneath Inner Channel  
For Support.

- INSTALLATION INSTRUCTIONS:**
1. Cut Outer Channel ② Flush With Edge of Tile to Allow Installation Against Vertical Surface.
  2. Rotate and Insert Outer Channel ② Underneath Adjacent Inner Channel ③.
  3. 1/2" Diameter Continuous Bead of SoftILE Adhesive at Each KrosLOCK Joint.
  4. Apply DuraSAFE Adhesive to Hold Outer Channel in Place. In addition, adhere the first 12" of the SoftILE to the sub grade below. ⑤

DuraSAFE Thickness	Critical Fall Height (FT)	FILE NAME	Full Tile Against Vertical Edge	PREPARED BY	B. GOSS
2.00"	3'	REV	DESCRIPTION	DATE	
2.25"	4'	0	ORIGINAL ISSUE	08/16/2016	
2.75"	5'				
3.25"	6'				
3.75"	7'				
4.25"	8'				
4.75"	9'				
5.00"	10'	SIZE	SCALE	DWG NO.	REV
5.25"	12'	A	N/A	2017-021	1



4393 DISCOVERY LINE  
PETROLIA, ONTARIO  
NON TPO  
PHONE: (800) 263-2363  
PHONE: (519) 882-8799  
FAX: (519) 882-2697  
EMAIL: info@softsurfaces.com