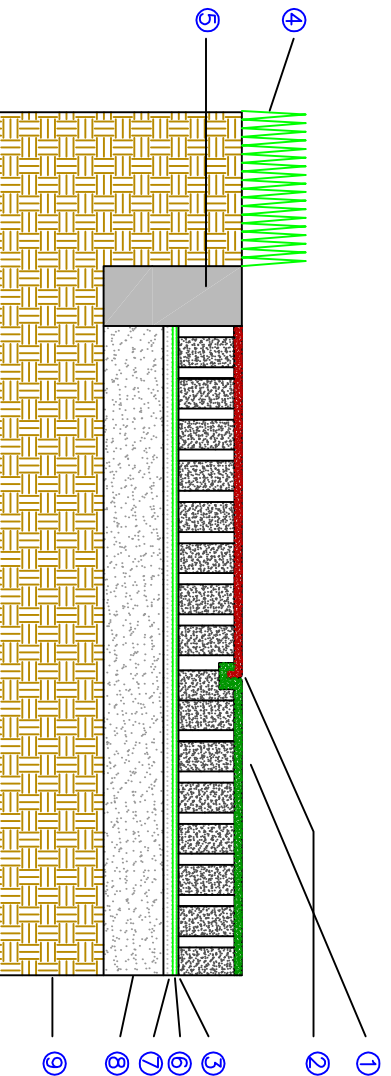




DuraSAFE Series

Over Aggregate Contained by Curb



LEGEND:

- ① DuraSAFE[®] tile (See Specifications for Depth and Color).
- ② 1/2" Diameter Continuous Bead of Adhesive at Each KrosLOCK Joint.
- ③ 1.0% Slope - 1/8" / 12" (3mm / 300mm).
- ④ Sod
- ⑤ Containing Sidewalk/Curb/Timber
- ⑥ Rubber Sheeting to Stop 4" from Curb to Allow Drainage into Granular Base.
- ⑦ Minimum 1" deep 1/4" (6mm) Fine Crushed Computed Granite Screenings (As Required) to Achieve a Max 1/4" (6mm) Variation in Grade When Measured With a 10" (3m) Straight Edge in any Direction.
- ⑧ Computed Granular A (Type I) (3/4" minus) To 95% S.P.D. (See Specifications for Depth).
- ⑨ Computed Subgrade.

NOTES:

1. Consult with a local Civil Engineer to find out what drainage system is best for your application.
2. Ensure subsoil drains towards drainage system.
3. Review Most Recent Installation Manual and Sub Surface Guide

DuraSAFE Thickness	Critical Fall Height (FT)	FILE NAME	Over Concrete Contained by Curb	PREPARED BY	B. GOSS
2.00"	3'	REV	DESCRIPTION	DATE	
2.25"	4'	0	ORIGINAL ISSUE	08/16/2016	
2.75"	5'				
3.25"	6'				
3.75"	7'				
4.25"	8'				
4.75"	9'				
5.00"	10'				
5.25"	12'	SIZE	SCALE	DWG NO.	REV
		A	N/A	2017-022	1



4393 DISCOVERY LINE
 PETROLIA, ONTARIO
 NON IRO
 PHONE: (800) 263-2363
 PHONE: (519) 882-8799
 FAX: (519) 882-2697
 EMAIL: info@softsurfaces.com