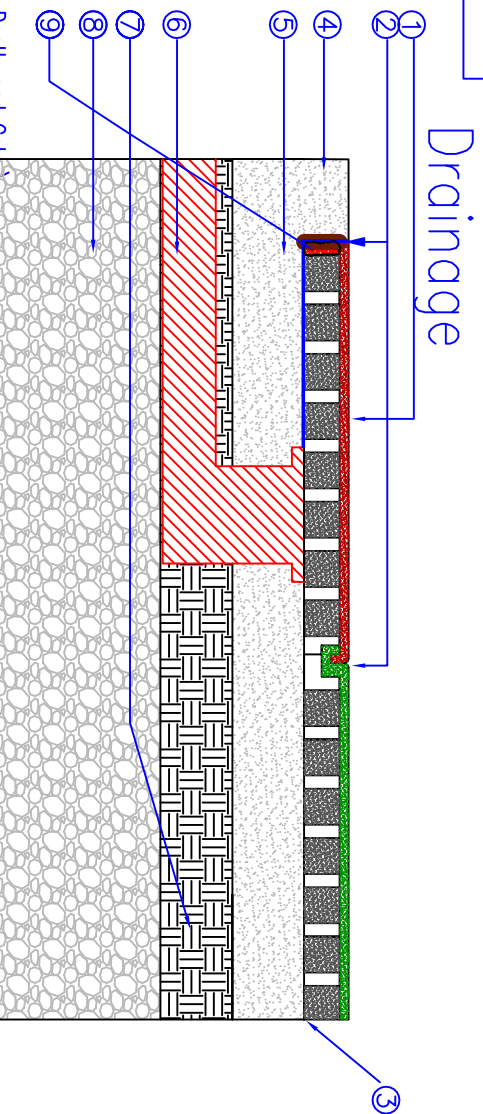




DuraSAFE Series

DuraSAFE contained by Curb with Drainage



LEGEND:

- ① DuraSAFE® tile (See Specifications for Depth and Color).
- ② 1/2" Diameter Continuous Bead of DuraSAFE® Adhesive at Each KrosLOCK Joint.
- ③ 1.0% Slope – 1/8" / 12" (3mm / 300mm).
- ④ Containing Sidewalk Concrete/Asphalt Base
- ⑤ Flat Perforated Grate with Drain Pipe. **see Notes below
- ⑥ Compacted Aggregate
- ⑦ Expanded Foam (polyurethane-based) – Great Stuff Window and Door or Equal.
- ⑧ Expansion Foam (polyurethane-based) – Great Stuff Window and Door or Equal.
- ⑨ Sidewalk

NOTES:

- 1. Consult with a local Civil Engineer to find out what drainage system is best for your application.
- 2. Ensure subsoil drains towards drainage system.
- 3. Review Most Recent Installation Manual and Sub Surface Guide

DuraSAFE Thickness	Critical Fall Height (FT)	FILE NAME	Contained by curb with Drainage	PREPARED BY	B. GOSS
2.00"	3'	REV	DESCRIPTION	DATE	
2.25"	4'	0	ORIGINAL ISSUE	08/16/2016	
2.75"	5'				
3.25"	6'				
3.75"	7'				
4.25"	8'				
4.75"	9'				
5.00"	10'				
5.25"	12'	SIZE	SCALE	DWG NO.	REV
		A	N/A	2017-025	1



4393 DISCOVERY LINE
 PETROLIA, ONTARIO
 NON TRO
 PHONE: (800) 263-2363
 PHONE: (519) 882-8799
 FAX: (519) 882-2697
 EMAIL: info@softsurfaces.com