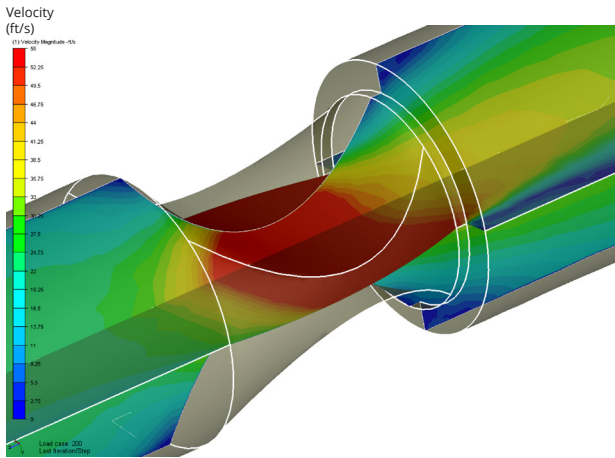


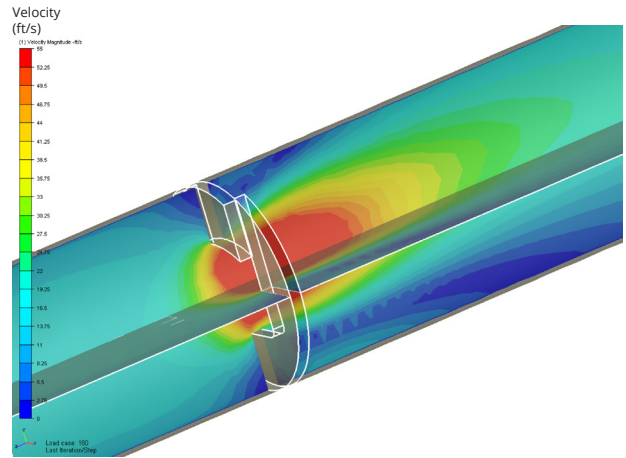
# CONTROL VALVE COMPARISON

## PINCH VALVE VS. SLURRYFLO VALVE



### PINCH VALVE

As the elastomer sleeve is 'pinched', abrasive flow is accelerated within the valve, with the highest velocities (and sleeve wear) occurring in the corners.

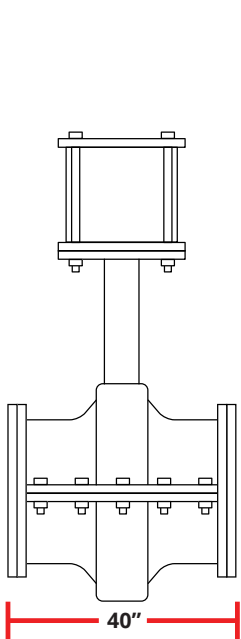


### SLURRYFLO VALVE

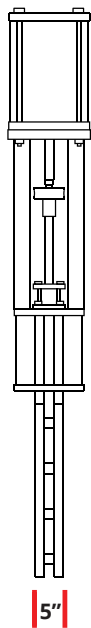
Flow is directed through the center of the valve to protect the valve's body and downstream pipe, providing a quantum leap in service life.

### FACE-TO-FACE DIMENSIONS

SlurryFlo valves require minimal face-to-face dimensions.



24" PINCH VALVE



24" SLURRYFLO VALVE

### VALVE WEIGHT

SlurryFlo control valves are relatively lightweight.

**4000 lbs**

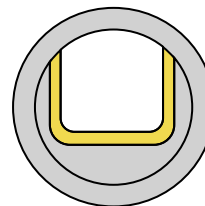
24" PINCH VALVE

**1600 lbs**

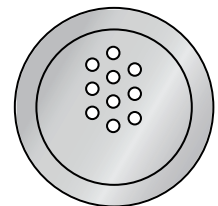
24" SLURRYFLO VALVE

### CUSTOM TRIMS

SlurryFlo valves can be engineered with custom cavitation reducing trims and hard coated wear surfaces.



HARD COATED PLATE



CAVITATION REDUCING PLATE