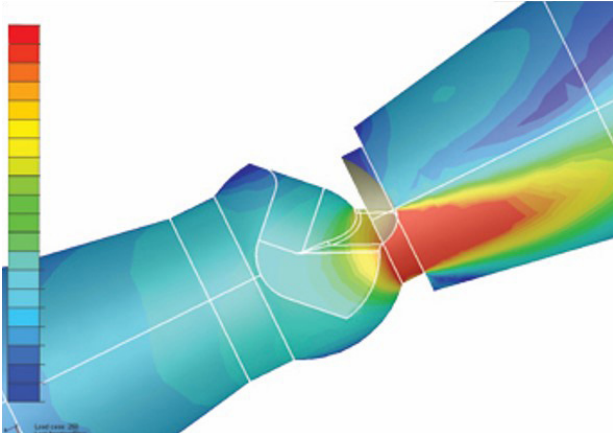


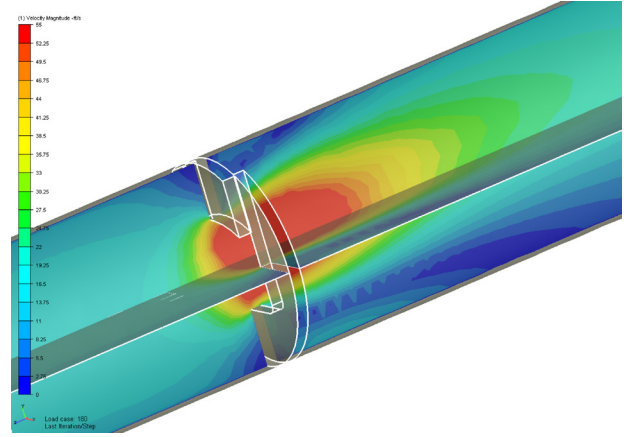
CONTROL VALVE COMPARISON

V-PORT BALL VALVE VS. SLURRYFLO VALVE



V-PORT BALL VALVE

Ball valves direct abrasive flow into the valve body and piping, resulting in erosion and damage.

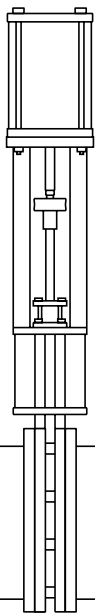


SLURRYFLO VALVE

Flow is directed through the center of the valve to protect the valve's body and downstream pipe, providing a quantum leap in service life.

FACE-TO-FACE DIMENSIONS

SlurryFlo eliminates the need to reduce the valve's size and add swages.



SLURRYFLO CONTROL VALVE

24" valve (with reduced trim) in a 24" line.

5"



V-PORT BALL VALVE

16" valve in 24" line (with swages)

40"

80"