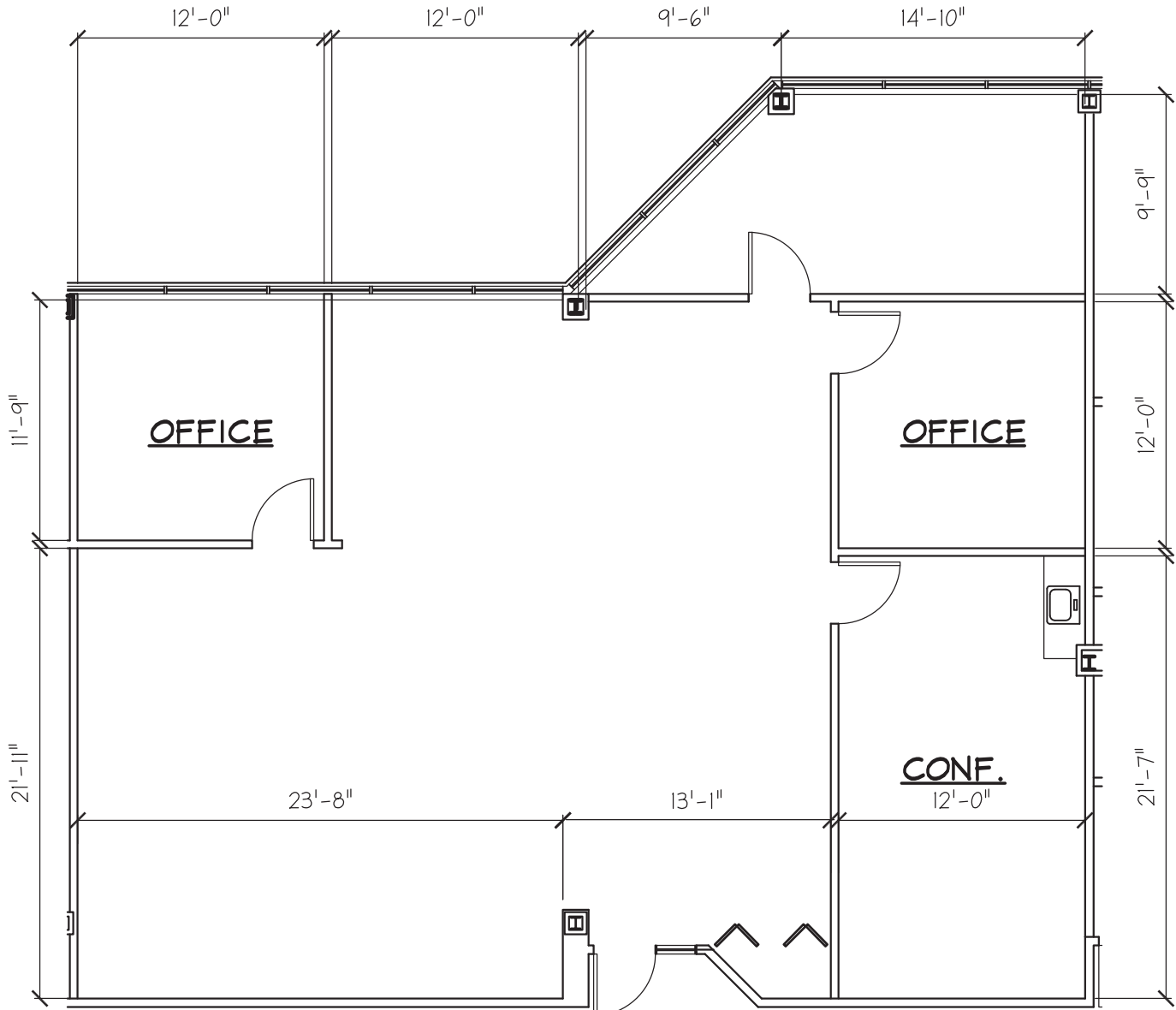
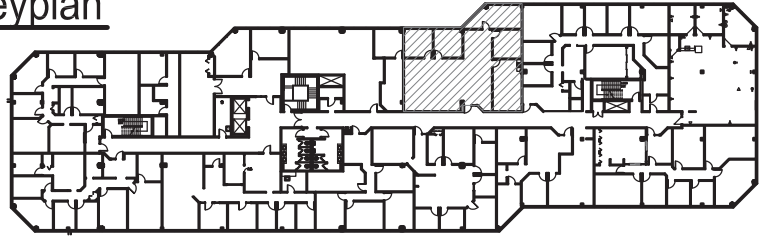




3rd Floor Keyplan

NOT TO SCALE



BUILDING CORRIDOR



Floor Plan

SCALE: 1/8"=1'-0"

04/02/12

2,060 R.S.F.

JFK INVESTMENTS COMPANY, L.L.C.

A MICHIGAN LIMITED LIABILITY COMPANY
 43252 WOODWARD AVE-SUITE 210-BLOOMFIELD HILLS, MI 48302
 PHONE: (248) 333-2373 - FAX: (248) 333-2873

PLAN FOR:

First Place Bank Business Center
 24725 W. 12 Mile Road, Suite 340

+ smith schurman associates, inc.
 architects ■ planners ■ interior designers

280 n. old woodward ave., suite LL10, birmingham, mi 48009
 telephone: 248/971-2323 facsimile: 248/971-2322

