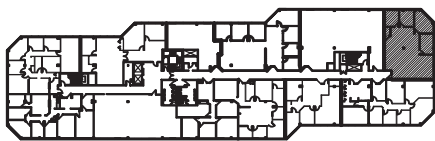


**KEY PLAN**  
NOT TO SCALE



**FIRST PLACE BANK  
BUSINESS CENTER  
SUITE 316**

24725 W. 12 MILE RD  
SOUTHFIELD, MI  
1,990 RSF

NORTH



SCALE: 1/8" = 1'-0"

**DAVIS & DAVIS**  
INTERIOR DESIGN

**JFK** INVESTMENT COMPANY, L.L.C.

A MICHIGAN LIMITED LIABILITY COMPANY  
43252 WOODWARD AVENUE - SUITE 210 - BLOOMFIELD HILLS, MI 48302  
PHONE: (248) 333-2373 - FAX (248) 333-2573 05/01/07

30500 NORTHWESTERN HWY. SUITE 311  
FARMINGTON HILLS, MI 48334  
PHONE (248) 855-7040 FAX (248) 855-7744  
WWW.DAVISINTERIORDESIGN.COM