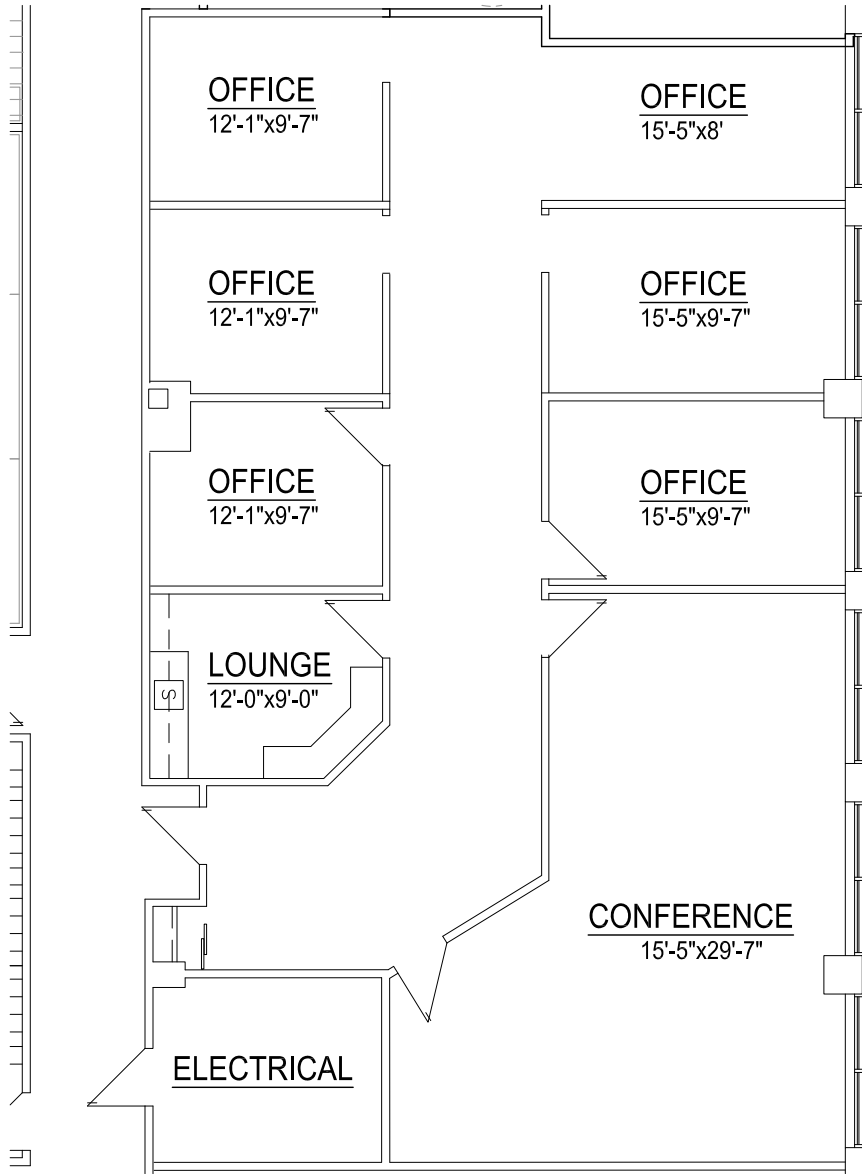
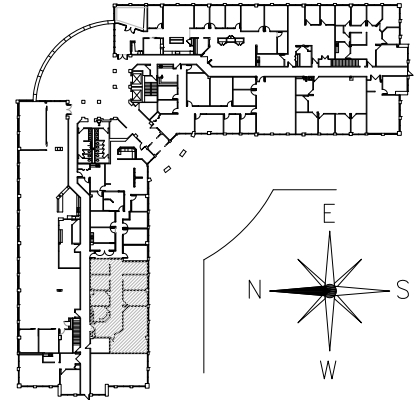


KEYPLAN



Suite 185 Floor Plan

SCALE: 1"=10'-0"

10/17/19

JFK INVESTMENT COMPANY, L.L.C.

A MICHIGAN LIMITED LIABILITY COMPANY
43252 WOODWARD AVE-SUITE 210-BLOOMFIELD HILLS, MI 48302
PHONE: (248) 333-2373 - FAX: (248) 333-2873

FLOOR PLAN FOR:

Lakepointe Office Center
26200 Town Center, Novi MI

smith + schurman associates, inc.
architects ■ planners ■ interior designers

280 n. old woodward ave., suite LL10, birmingham, mi 48009
telephone: 248/332-3140 facsimile: 248/332-3277

