

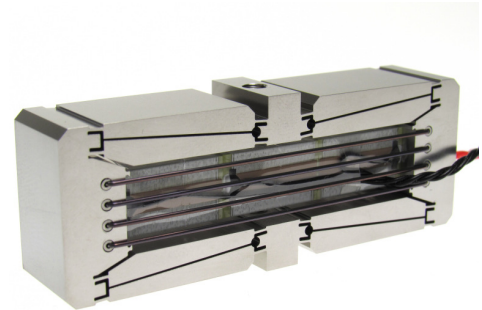
# FPA-1000E-P-1054-150-SS-1M4

## FlexFrame PiezoActuator™



### Description

DSM's FPA is a flexure guided piezoelectric actuator useful for both dynamic and static applications. Custom mounting conditions can be integrated into the design. "E" version actuators expand when they are energized.



### Specifications

		Units	Tolerance
Motion Direction	Expanding		
Nominal Travel, 0V to 150V	864	μm	Min 734
Nominal Travel, -30V to 150V	1080	μm	Min 918
Nominal Stiffness	0.4	N/μm	Min 0.34
Unloaded Resonant Frequency	250	Hz	±15%
Blocked Force*	346	N	
Capacitance	19.80	μF	±20%
Material	Stainless Steel		
Mass**	184	g	
Electrical Interface	Flying leads		
Mechanical Interface	Single M4x0.7 on center		
Height	28	mm	
Width	74	mm	
Depth	18	mm	

\* Blocked force calculated as [Stiffness x Travel Range at 0V to 150V]

\*\* Mass stated for reference

### Options

- Integrated Position Sensor
- Vacuum Compatibility
- Custom Mounting Holes
- Custom wire lengths and connectors
- Non-Magnetic compatibility