

FURRION

DVD ENTERTAINMENT SYSTEM WITH BLUETOOTH

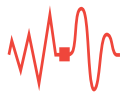
DV5700



VIBRATIONSMART™



CLIMATESMART™



SIGNALSMART™



SUBWOOFER
OUT



USB
INTERFACE



AUXILIARY
IN

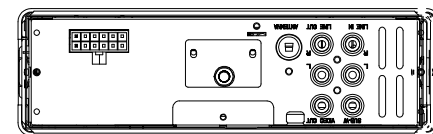
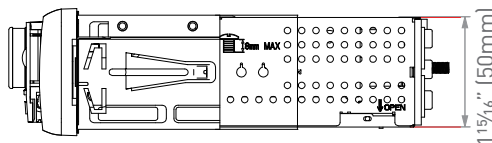
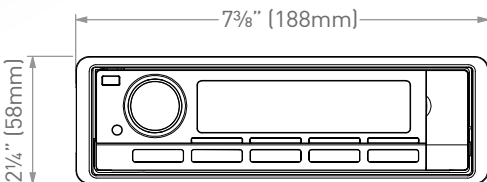
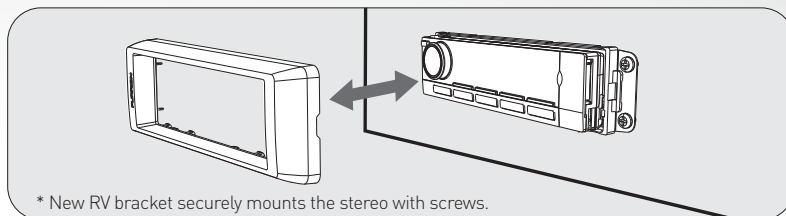
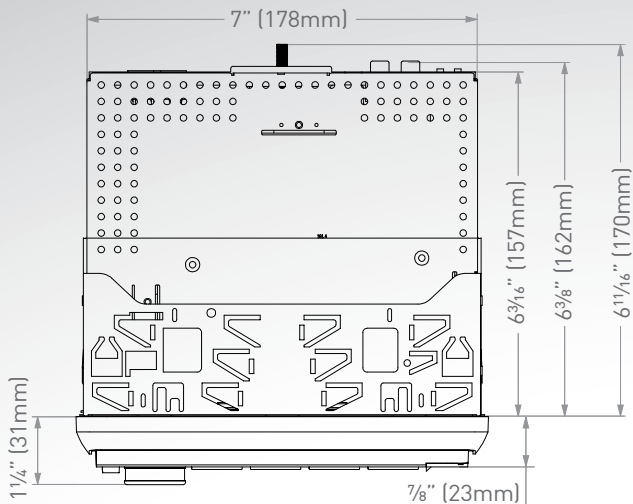


MEMORY CARD
READER

With a modern and sleek design, the new Furrion DV5700 delivers superior performance with the capability to bring you entertainment that makes sense. Easily connect most devices through the front auxiliary input to stream high-quality audio or experience USB and DVD entertainment optimized for your recreational vehicle.



DV5700 | DVD ENTERTAINMENT SYSTEM WITH BLUETOOTH



Specifications

Din Type	1-din
Front Panel Type	Detachable
Supported Disc Format	CD & DVD
Supported Media Format	MP3/WMA/AVI
Tuner Type	AM & FM
Number of Preset Stations	30
RDS	•
USB	✓
USB Charge (500mA)	✓
Card Reader	✓
Memory Card Support	SD/MMC
AUX-IN	✓
AUX-IN Video Support	✓
HDMI-IN	•
Bluetooth	2.1
# of RCA (Audio LR) Inputs, Rear Panel	1
# of RCA (Audio LR) Outputs, Rear Panel	1
# of Video Inputs, Rear Panel	•
# of Video Outputs, Rear Panel	1
# of Subwoofer Outputs, Rear Panel	1
# of HDMI Outputs, Rear Panel	•
# of Optical Audio Inputs, Rear Panel	•
# of Coaxial Audio Inputs, Rear Panel	•
# of Camera Inputs, Rear Panel	•
Display Type	LCD (VA Segment)
Display Size (inch)	3.7"

Display Backlight Color	White
Key Illumination Color	White
Rotary Volume Control	✓
Accessories Included	Remote Control with Batteries Mounting Bracket 12-pin Connecting Wires Manual Warranty Card
Power Output (Watt)	4 x 45Watt (MAX)
Power Connector Type	12-pin

Packaging Information

Packaging Type	Color Gift Box
Quantity Per Box (pcs)	1
Individual Packaging Dimensions (L x H x W)	8 1/2" x 9 1/4" x 3 3/8" (215 x 235 x 85mm)
Individual Packaging Gross Weight (kg/lbs)	1.58/3.5
Individual Packaging Net Weight (kg/lbs)	1.32/2.9

Master Carton

Packaging Type	Master Carton Box
Quantity Per Box (pcs)	5
Master Carton Dimensions (L x H x W)	17 1/2" x 10 1/16" x 9 1/16" (443 x 255 x 230mm)
Master Carton Gross Weight (kg/lbs)	7.9/17.4
Master Carton Net Weight (kg/lbs)	6.6/14.6

* Note: "✓"=Equipped "•" = Not available