

# MISSIONAL YOUTH CHURCH NETWORK Newsletter

Spring 2021...

*A message from Andy*



As I write this newsletter, the snow is falling and it's very cold! Fitting weather that reflects how many of us feel during lockdown and yet there is incredible beauty in each snowflake and snow-covered hill, reminding me of hope and joy. As we look forward to Spring and the vaccine reaching more people, this is a time to respond, recover and rebuild - see [Episode 16: Leading with empathy as we recover and rebuild](https://www.ncfgiving.com/episode-16-leading-with-empathy-as-we-recover-and-rebuild) | [National Christian Foundation \(ncfgiving.com\)](https://www.ncfgiving.com)



Missional Youth Churches (MYCs) **respond** to the pandemic by connecting with young people via phone calls, distributing gifts, encouraging online activities and walking socially distanced one to one with young people. We're connecting to young people via Zoom. We're also responding by getting alongside young people out and about in the local area. Being careful to stay safe, we're going out to them just as Jesus went to where people are, often joining with council youth workers to get alongside and support young people outdoors.

Looking ahead, we're working towards a **recovery** season by getting ready to connect with more young people. This will mean spending more time being with young people as they navigate the loss of loved ones, loss of childhood experiences, loss of schooling and struggles with mental health. Space for recovery will be important in helping young people reflect, understand and come to terms with what has happened to them; helping them connect to the God who makes sense of our lives, gives us hope and never wastes our experiences but uses them for our good.

Looking further ahead, we hope to help **rebuild** young lives, youth groups and missional youth church. By encouraging many in our Learning Community to make use of our 'MYCN Youth Leaders and Teams' Resource, they are getting ready for what will hopefully be a spring and summer with more opportunities to engage and regroup with young people. Missional youth churches can play a key role as young people, schools and communities rebuild.

*Andy Milne, CA. Missional Youth Church Network Strategic Lead*

## Getting Ready!!!

Following the decision of Allchurches Trust to fund MYCN over a 3 year period, we are now in the process of recruiting one full time or two part time Strategic Leads to work alongside Andy Milne in mentoring youth leaders, working to support local MYC's and networking with churches, dioceses, mission agencies, community and schools so that together we can see lots of young people discover the God who loves them so completely.



Our hope is to make a difference in many more young lives as we support local MYCs to reach young people, develop community, share Jesus, grow disciples and young leaders.

## What's been happening?

An update on what's been happening in several places where missional youth churches are being developed: -



In *Murton*, County Durham, Leanne Davies and team have been connecting with young people in Dalton Park Outlet Shopping Centre, Seaham High secondary school and through a 'support group' for vulnerable young people. Leanne is excited to have been given keys to a youth centre based in a shop! Leanne says, 'we can't wait to get in the building with our young people once the restrictions have eased...'

In *Keighley*, West Yorkshire, Laura Woodfine has been running two youth groups via Zoom to encourage, support and give hope to young people who have to contend with isolation from their friends and home schooling at an age when socialising is so important. With mental health issues among young people on the rise, Laura and team are supporting these young people through this tough time.

In *Knowle*, Birmingham, Paul Holden and team have continued to meet young people in their Penny's youth café - with social distancing. As the third lockdown hit, they took to visiting young people on their doorsteps, even dropping presents off, taking a socially distanced walk or connecting via Zoom. Paul says, 'being creative and adapting quickly to the changing situation is key to keeping those connections with young people fresh...'



In *Sorted*, Bradford, Tracy Milne and team connect with young people in school, on local estates, via Zoom, through a 'cook and eat' project, distributing gifts and socially distanced walks with young people. Tracy says, 'we continue to reach young people during the pandemic and have seen some young adults reconnect with us online...'

## Learning Community

Building on the theme of rebuilding and getting ready, we've hosted two online Learning Communities which have focused on 'creating local groups of partners' such as churches, school, youth workers and community. This will help ensure that as we bounce back, MYCs are being built on a sure foundation of partners who can support, advise and resource the youth work, making it sustainable.



We then gathered as a group of 25 to focus on 'how to plan youth church' as we explored where pioneering youth work can begin in a local area and how to build relationships with many young people. These two topics help those who working with young people to recover and plan to rebuild. We're helping each other get ready to re-engage with many more young people when restrictions ease.

The next Learning Communities will happen in April and June. We also hope to do a residential in July at Scargill (should Covid 19 restrictions permit).

## Resources/Website

We're encouraging youth workers and their teams to access our 'MYCN Youth Leaders and Teams' Resource as a great way to explore how a local team might begin doing missional youth church. The Resource features a mix of stories, principles, practical ideas and discussion based around topics which include: -

- What might the journey into missional youth church look like?
- How to build relationships with young people
- How to empower young people
- How do we listen to young people?
- How do we love and serve young in the places they hang out?
- How do we build community with young people?
- How do we start discipleship with young people?
- How do we develop worship and do church with young people?
- How can we repeat the process?

The Resource is currently available in pdf format and we are in the process of filming the Resource so that it can be available via our website later in 2021.



## Social Media



MYCN is on Facebook and Twitter. Follow us/like at:

**Twitter** – Missional Youth Church @MYCNYouth

**Facebook** – Missional Youth Church Network @MYCNYouth

## Funding

We continue to seek funding for our work to enable us to produce the resources, employ staff and keep going as a Network. However, this is a difficult challenge, particularly at the moment when funders are concentrating understandably on relieving the immediate effects of poverty occasioned by the Covid-19 pandemic.

## Financial Support

If you would like to make a regular or one-off gift to support our work, please complete and return the form at the end of this newsletter or visit [churcharmy.org/donate](http://churcharmy.org/donate).

*'Go therefore and make disciples of all nations, baptizing them in the name of the Father and of the Son and of the Holy Spirit, and teaching them to obey everything that I have commanded you. And remember, I am with you always, to the end of the age.'*  
Matthew 28. 19-20

## Prayer Pointers

### Sunday

- Seacroft estate, Bishop Young Academy and local churches, east Leeds
- Sentamu Academy and local churches, east Hull
- Harrogate
- Stephen Cottrell, Archbishop of York

### Monday

- Rural Ainsty
- Durham
- Cambridge

### Tuesday

- Sorted, Bradford
- Penrith
- TYM, South London
- Archbishop of York Youth Trust

### Wednesday

- Keighley
- Bestwood, Nottingham
- Tin Can, Wrexham

### Thursday

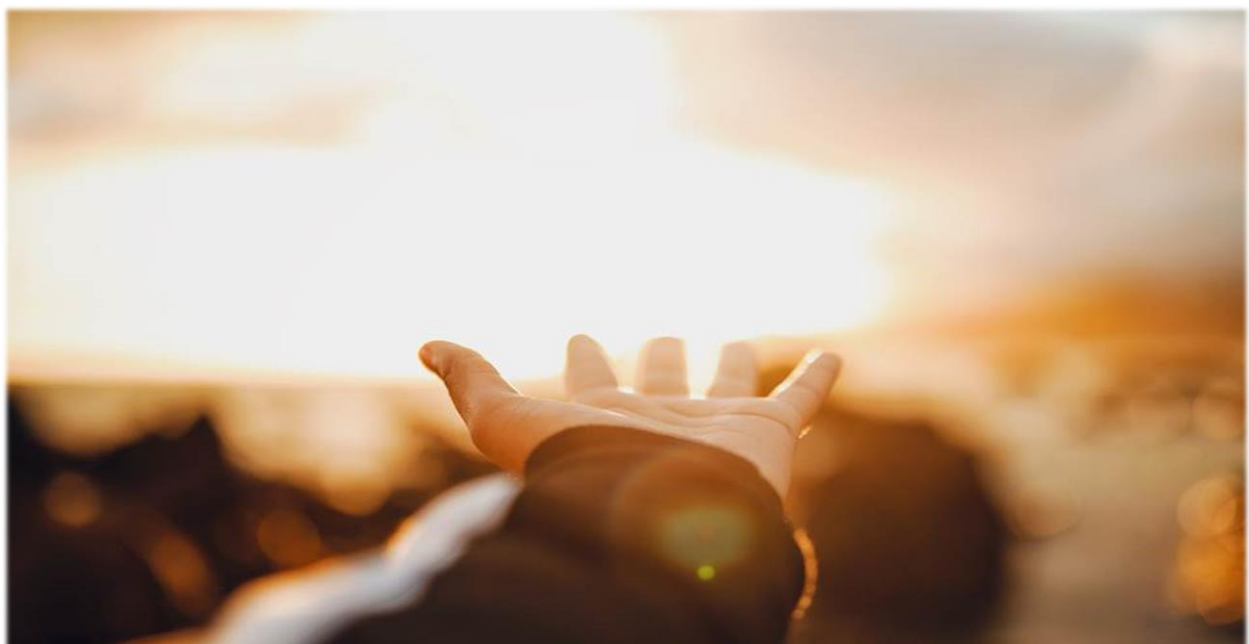
- Leeds Diocese
- Middlesbrough
- Durham
- Church Army

### Friday

- Chester Diocese
- Blackburn Diocese
- Hodnet, Shropshire

### Saturday

- Ipswich
- Knowle
- York Diocese





# I WOULD LIKE TO SUPPORT MISSIONAL YOUTH CHURCH NETWORK

Please return to:

**Church Army, Wilson Carlisle Centre, 50 Cavendish Street, Sheffield, S3 7RZ**

Type of donation: One-off\* / Regular\* (please send me a direct debit)

\*delete as appropriate

Amount of donation: £\_\_\_\_\_ Payment method: Cheque\* / Debit card\*

(Please make cheques payable to 'Church Army – Code 1186')

Card Number: \_\_\_\_\_

Valid from: \_\_\_\_/\_\_\_\_/\_\_\_\_ Expires end \_\_\_\_/\_\_\_\_/\_\_\_\_

Signature: \_\_\_\_\_ Date: \_\_\_\_\_

## Gift Aid Declaration: Boost my donation by claiming Gift Aid

### Boost your donation by 25p of Gift Aid for every £1 you donate

Gift Aid is reclaimed by the charity from the tax you pay for the current tax year.

Your address is needed to identify you as a current taxpayer.

In order to Gift Aid your donation you must tick the boxes below:

*giftaid it*

☐ I want to Gift Aid my donation of £\_\_\_\_\_ and any donations I make in the future or have made in the past 4 years to Church Army.

☐ I am a UK taxpayer and understand that if I pay less Income Tax and/or Capital Gains Tax than the amount of Gift Aid claimed on all my donations in that tax year it is my responsibility to pay any difference.

Title: Forename: \_\_\_\_\_ Surname: \_\_\_\_\_

Address: \_\_\_\_\_

\_\_\_\_\_  
Postcode: \_\_\_\_\_

☐ Please contact me to let me know how I can do more to hear about and support Church Army's work (please tick if desired).

Tel: \_\_\_\_\_ Email: \_\_\_\_\_

## Using your personal information – Data Protection

*Church Army is committed to processing the personal data you provide us with in a fair, lawful and transparent manner. We will only use your data for the purposes you have provided it for and in line with the consents you have given. We will not share your data with any third parties, except for those acting as our agents. Further details in relation to the data we hold, how that data will be processed and your rights in relation to that data are set out in our privacy notices and our data protection policy which can be found at [www.churcharmy.org/dataprotection](http://www.churcharmy.org/dataprotection)*