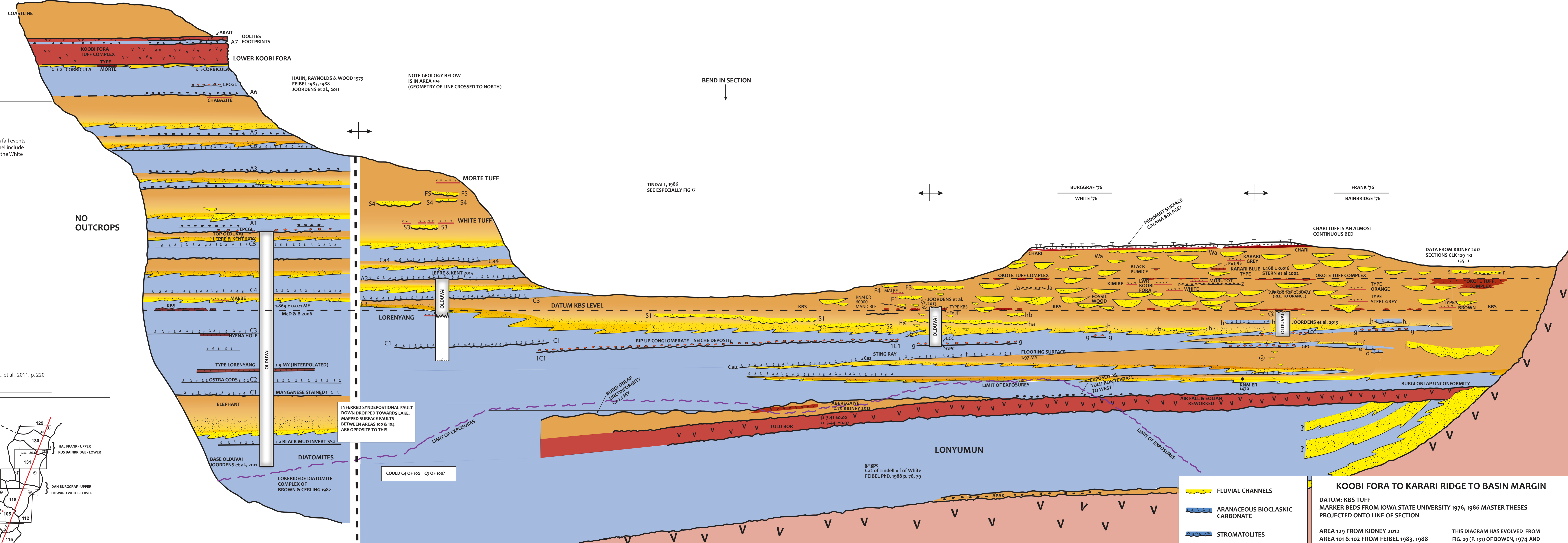


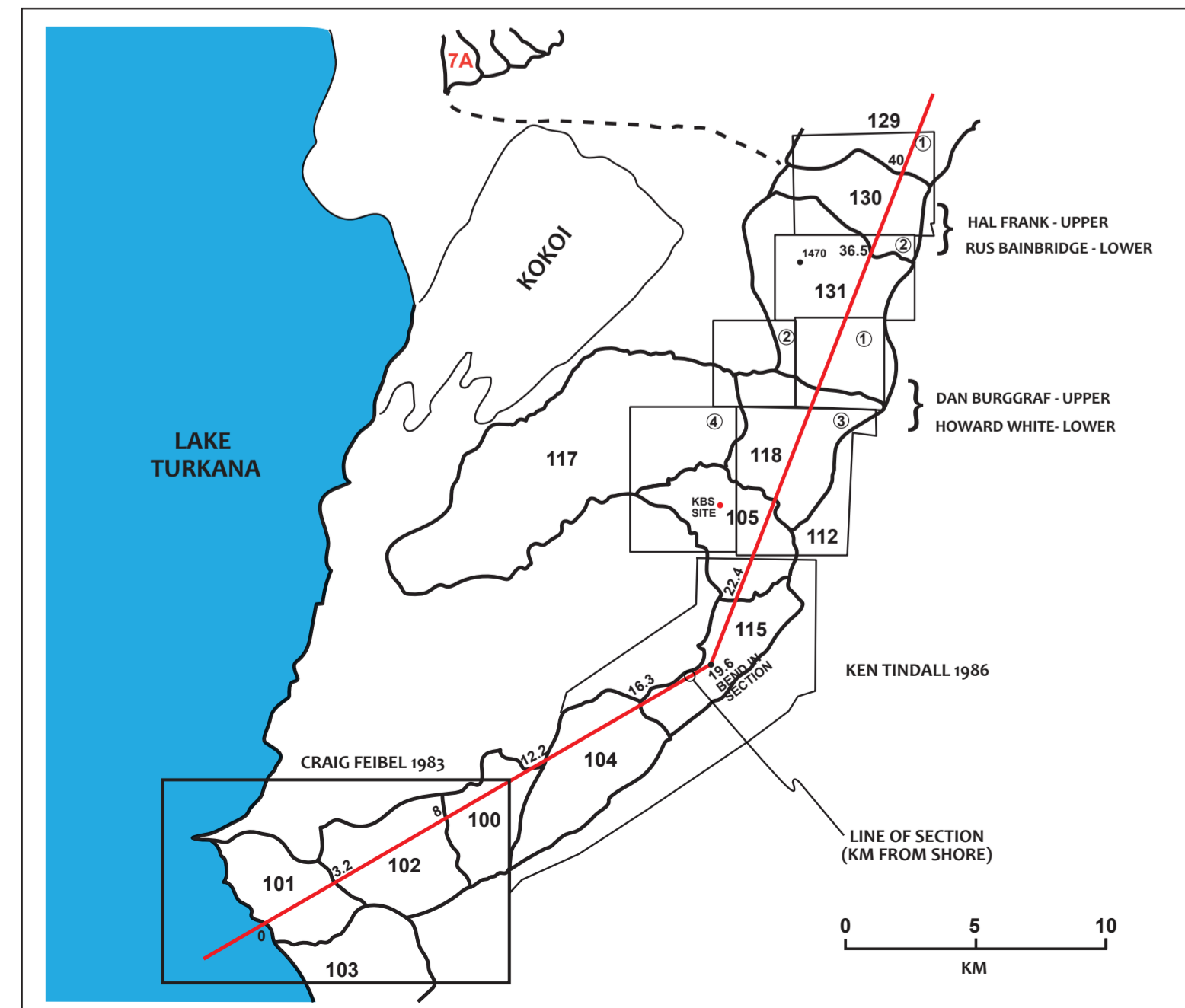
SW ← AREA 101 | AREA 102 | AREA 100 | AREA 104 | AREA 115 | AREA 105 | AREA 118 (FORMER 108) | AREA 131 | AREA 130 | AREA 129 → NE



Tuffs present on Karari Panel

Chari (=L) 1.38 +/- 0.03 McD., et al, 2011 fig 3, Areas 118, 131.
 Okote Tuff Complex
 Koobi Fora Tuff Complex
 These correlative tuff complexes include 30 or more ash fall events, are correlative to the Ileret Tuff Complex, and in this panel include named tuffs ranging from the Akait Tuff near the top to the White Tuff near the base.

Akait, Area 103, Top of KF Tuff Complex
 Karari Grey, Area 131
 Karari Blue, 1.48 +/- 0.01 McD., et al, 2011, fig 3
 Area 131 (type, just below Archeology site FxJ43)
 Black Pumice, Area 131 (type)
 Koobi Fora (=K1), 1.49 +/- 0.01 McD., et al, 2011, fig 3
 Areas 101 (type), 102, 103
 Upper Okote (=Ka), Okote (=J6), Lower Okote, Area 131 (type)
 Morutot (=J-4a), 1.61 +/- 0.02 McD., et al, 2011 fig 3
 Area 131 (type)
 Kimire, Area 131 (type)
 Lower Koobi Fora, 1.48 +/- 0.01 (B&McD, 2011), Areas 101 (type), 103, 131
 Morte, 1.51 +/- 0.02 McD., et al, 2011, fig 3
 Areas 101, 104
 White, Areas 104, 131 (type)
 Chabazite, Area 103
 Orange (=J), 1.760 +/- 0.026 McD., et al, 2011, p. 221
 Area 130 (type)
 Malbe (=H4), 1.84 +/- 0.02 (McD., et al., 2011) fig 3.
 Areas 102, 105 (type is in Area 112)
 Steel Grey, Area 130 (type)
 Brown, Area 129 (type), just over KBS, perhaps same eruption
 KBS (=H2), 1.87 +/- 0.02 (McD., et al, 2011)
 Areas 102, 105 (type), 118, 131, 130, 129
 Hyena Hole Area 102, (informal)
 Lorenyang, Areas 102 (type), 104
 Aberegaiye, Area 116 (type)
 Ninikaa, Area 116
 Tulu Bor (=B), Area 129 (type)
 Upper Beta Tulu Bor = Tuff B-delta, 3.412 +/- 0.033 McD., et al., 2011, p. 220
 Lower Alpha Tulu Bor = Tuff B-alpha (high calcium)
 3.44 +/- 0.02 McD., et al., 2011, fig 3



NO OUTCROPS

VERY HIGH ACCOMMODATION

MODERATE ACCOMMODATION

LOW ACCOMMODATION

- FLUVIAL CHANNELS
- ARANACEOUS BIOCLASINIC CARBONATE
- STROMATOLITES
- BASALT PEBBLES IN CHANNELS
- VOLCANIC ASH
- LIMONITE PEBBLE CONGLOMERATE (LPCGL)

KOObI FORA TO KARARI RIDGE TO BASIN MARGIN

DATUM: KBS TUFF
 MARKER BEDS FROM IOWA STATE UNIVERSITY 1976, 1986 MASTER THESES
 PROJECTED ONTO LINE OF SECTION

AREA 129 FROM KIDNEY 2012
 AREA 101 & 102 FROM FEIBEL 1983, 1988
 AND HAHN, RAYNOLDS & WOOD 1973

THIS DIAGRAM HAS EVOLVED FROM
 FIG. 29 (P. 131) OF BOWEN, 1974 AND
 FIG. 2.19 OF ISAAC & BEHRENSMEYER, 1997

M 20
 0 50 X VE
 1 KM

R. RAYNOLDS
 15 OCTOBER 2019